

Material Handling Machine

# LH 80 Port

Litronic®

**Generation**

6

**Operating Weight**

166,900 – 257,300 lb\*

**Engine**

308 HP (I)/230 kW

Stage Tier 4f

**System Performance**

418 kW

\* Without attachment



# LIEBHERR

# Technical Data



## Diesel Engine

|                                      |   |
|--------------------------------------|---|
| <b>Rating per SAE J1349/ISO 9249</b> | 308 HP (l) (230 kW) at 1,800 rpm  |
| <b>Model</b>                         | Liebherr D946   |
| <b>Type</b>                          | 6 cylinder in-line  |
| <b>Bore/Stroke</b>                   | 5.1/5.9 in  |
| <b>Displacement</b>                  | 729 in <sup>3</sup>   |
| <b>Engine operation</b>              | 4-stroke diesel<br>Common-Rail<br>turbo-charged and after-cooled<br>reduced emissions |
| <b>Air cleaner</b>                   | dry-type air cleaner with pre-cleaner, primary and safety elements                    |
| <b>Engine idling</b>                 | sensor controlled   |
| <b>Electrical system</b>             |   |
| Voltage                              | 24 V  |
| Batteries                            | 2 x 180 Ah/12 V   |
| Alternator                           | three-phase current 28 V/140 A  |
| <b>Stage Tier 4f</b>                 |   |
| Harmful emissions values             | in accordance with EPA/CARB-40CFR stage Tier 4f                                       |
| Emission control                     | Liebherr-SCR technology   |
| Fuel tank                            | 174 gal   |
| Urea tank                            | 17 gal  |



## Cooling System

|                      |   |
|----------------------|---|
| <b>Diesel engine</b> | water-cooled cooling system, consisting of a cooling unit for water and charge air and a 2 <sup>nd</sup> cooler for hydraulic oil, each with an infinitely variable, thermostatically controlled fan drive system |
|----------------------|---|



## Hydraulic Controls

|                             |   |
|-----------------------------|---|
| <b>Power distribution</b>   | via control valves with integrated safety valves, simultaneous actuation of chassis and equipment. Swing drive in separate closed circuit |
| <b>Servo circuit</b>        |   |
| Equipment and swing         | with electro-hydraulic pilot control and proportional joystick levers   |
| Chassis                     |   |
| Mobile                      | electro-proportional via foot pedal   |
| Crawler                     | with electric proportionally functioning foot pedals or adjusted with plugable levers   |
| <b>Additional functions</b> | via switch or electro-proportional foot pedals  |
| Proportional control        | proportionally acting transmitters on the joysticks for additional hydraulic functions  |



## Hydraulic System

|  |                                |   |
|--|--------------------------------|---|
| <b>Hydraulic pump</b>                        | for equipment and travel drive | 2 Liebherr axial piston variable displacement pumps (double construction)   |
| Max. flow                                    |                                | 2 x 96 gpm  |
| Max. pressure                                |                                | 5,076 psi   |
| for swing drive                              |                                | reversible axial piston variable displacement pump, closed-loop circuit   |
| Max. flow                                    |                                | 52 gpm  |
| Max. pressure                                |                                | 5,366 psi   |
| <b>Hydraulic pump regulation and control</b> |                                | 2 circuit Liebherr-Synchron-Comfort-system (LSC) with electronic engine speed sensing regulation, pressure and flow compensation, automatic oil flow optimizer  |
| <b>Hydraulic tank</b>                        |                                | 90 gal  |
| <b>Hydraulic system</b>                      |                                | 240 gal   |
| <b>Hydraulic oil filter</b>                  |                                | 2 main return filters with integrated partial micro filtration (5 µm)   |
| <b>MODE selection</b>                        |                                | adjustment of engine and hydraulic performance via a mode pre-selector to match application, e.g. for especially economical and environmentally friendly operation or for maximum material handling and heavy-duty jobs |
| S (Sensitive)                                |                                | mode for precision work and lifting through very sensitive movements  |
| E (Eco)                                      |                                | mode for especially economical and environmentally friendly operation   |
| P (Power)                                    |                                | mode for high performance with low fuel consumption   |
| P+ (Power-Plus)                              |                                | mode for highest performance and for very heavy duty applications, suitable for continuous operation  |
| <b>Engine speed and performance setting</b>  |                                | stepless alignment of engine output and hydraulic power via engine speed  |
| Option                                       |                                | Tool Control: 20 preadjustable pump flows and pressures for add-on attachments  |



## Swing Drive

|                      |   |
|----------------------|---|
| <b>Drive</b>         | Liebherr axial piston motor in a closed system, Liebherr planetary reduction gear |
| <b>Swing ring</b>    | Liebherr, sealed race ball bearing swing ring, internal teeth                     |
| <b>Swing speed</b>   | 0 – 6.5 rpm stepless  |
| <b>Swing torque</b>  | 103,996 lbf ft  |
| <b>Holding brake</b> | wet multi-disc (spring applied, pressure released)                                |
| <b>Option</b>        | slewing gear brake Comfort  |



## Operator's Cab

|   |  |
|---|--|
| <b>Cab</b>                              | safety cab structure with individual windscreens or featuring a slide-in subpart under the ceiling, work headlights integrated in the ceiling, a door with a sliding window (can be opened on both sides), large stowing and depositing possibilities, shock-absorbing suspension, sound damping insulating, tinted laminated safety glass, separate shades for the sunroof window and wind-screen |
| High Rise/Gantry                        | deviating from standard: safety cab structure with fixed built-in front and roof window made from impact-resistant laminated safety glass  |
| <b>Operator's seat Comfort</b>          | air cushioned operator's seat with 3D-adjustable armrests, headrest, lap belt, seat heater, adjustable seat cushion inclination and length, lockable horizontal suspension, automatic weight adjustment, adjustable suspension stiffness, pneumatic lumbar vertebrae support and passive seat climatisation with active coal   |
| <b>Operator's seat Premium (Option)</b> | in addition to operator's seat comfort: active electronic weight adjustment (automatic re-adjustment), pneumatic low frequency suspension and active seat climatisation with active coal and ventilator  |
| <b>Control system</b>                   | joysticks with control consoles and swivel seat, folding left control console  |
| <b>Operation and displays</b>           | large high-resolution operating unit, self-explanatory, color display with touchscreen, video-compatible, numerous setting, control and monitoring options, e.g. air conditioning control, fuel consumption, machine and attachment parameters   |
| <b>Air-conditioning</b>                 | automatic air-conditioning, recirculated air function, fast de-icing and demisting at the press of a button, air vents can be operated via a menu; recirculated air and fresh air filters can be easily replaced and are accessible from the outside; heating-cooling unit, designed for extreme outside temperatures, sensors for solar radiation, inside and outside temperatures                |



## Equipment

|                                   |   |
|-----------------------------------|---|
| <b>Type</b>                       | weight-optimized design for bulk and general cargo handling at optimal handling capacity. Complex and stable mountings of equipment and cylinders |
| <b>Hydraulic cylinders</b>        | Liebherr cylinders with special sealing and guide system and, depending on cylinder type, shock absorption  |
| <b>Energy recovering cylinder</b> | Liebherr gas cylinder with special sealing and control system   |
| <b>Bearings</b>                   | sealed, low maintenance   |



## Undercarriage

|                   |  |
|-------------------|--|
| <b>Mobile</b>     |  |
| Versions          | Standard, High Rise  |
| Drive             | one axle drive per drive axle with Liebherr axial piston motor and functional brake valve on both sides (Standard);<br>one driven axle with transmission with Liebherr axial piston motor and functional brake valve on both sides (High Rise) |
| Travel speed      |  |
| Joystick steering | 0 – 2.2 mph stepless (creeper speed)<br>0 – 6.2 mph stepless<br>0 – 3.1 mph stepless (creeper speed) (High Rise)<br>0 – 5.0 mph stepless (High Rise)   |
| Driving operation | automotive driving using accelerator pedal, cruise control function: storage of variable accelerator pedal positions   |
| Axles             | 198,400 lb drive axles; manual or automatic hydraulically controlled front axle oscillation lock   |
| Service brake     | two circuit travel brake system with accumulator; wet and backlash-free disc brake   |
| Holding brake     | wet multi-disc (spring applied, pressure released)   |
| Stabilization     | 4 point outriggers   |
| <b>Crawler</b>    |  |
| Versions          | SW, High Rise, Gantry  |
| Drive             | Liebherr compact planetary reduction gear with Liebherr axial piston motor per side of under-carriage  |
| Travel speed      |  |
| SW                | 0 – 1.6 mph stepless (creeper speed)<br>0 – 2.5 mph stepless   |
| High Rise         | 0 – 1.2 mph stepless (creeper speed)<br>0 – 1.8 mph stepless   |
| Gantry            | 0 – 1.6 mph stepless (creeper speed)<br>0 – 2.2 mph stepless   |
| Brake             | functional brake valves on both sides  |
| Holding brake     | wet multi-disc (spring applied, pressure released)   |
| Track pads        | triple grouser, flat   |
| Tracks            | sealed and greased   |

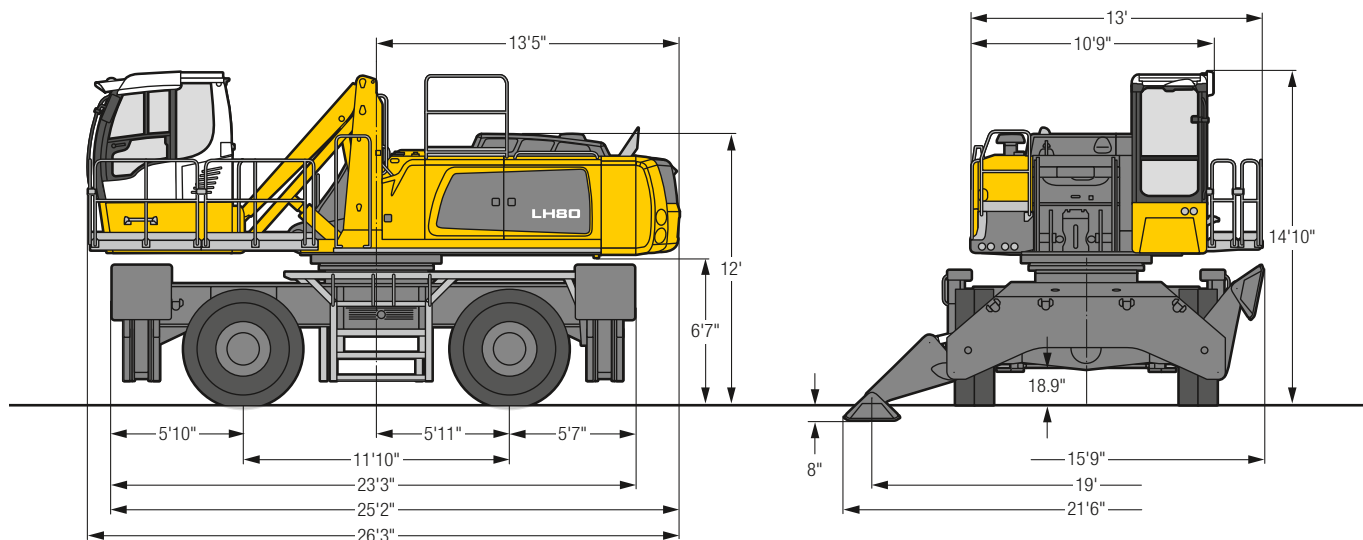


## Complete Machine

|                       |  |
|-----------------------|--|
| <b>Lubrication</b>    | Liebherr central lubrication system for upper-carriage and equipment, automatically    |
| Mobile (Option)       | Liebherr central lubrication system for under-carriage, automatically                  |
| <b>Steps system</b>   | safe and durable access system with anti-slip steps;<br>main components hot-galvanized |
| <b>Noise emission</b> |  |
| ISO 6396              | $L_{pA}$ (inside cab) = 70 dB(A)   |
| 2000/14/EC            | $L_{WA}$ (surround noise) = 105 dB(A)  |

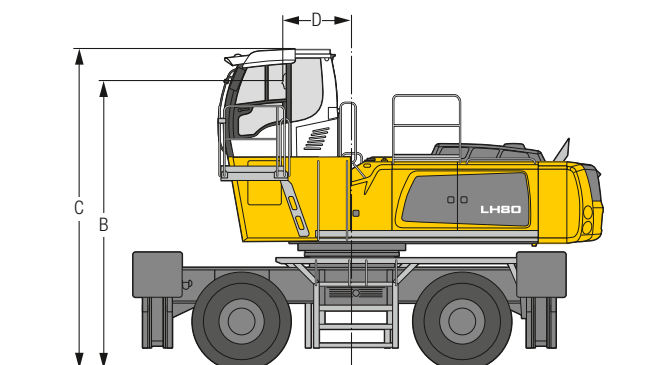
# LH 80 M – Dimensions

## Port



# LH 80 M – Choice of Cab Elevation

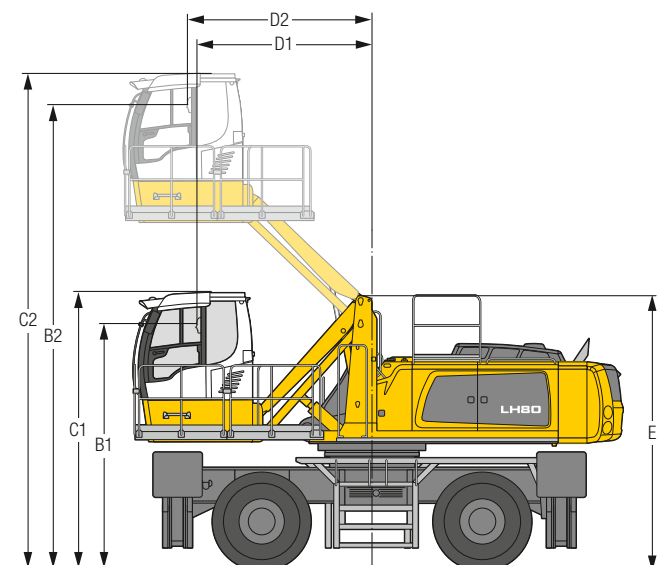
## Cab Elevation LFC (Rigid Elevation)



| Increase type | LFC 120 | LFC 200 |
|---------------|---------|---------|
| Height        | 3'11"   | 6'7"    |
| B             | 15' 5"  | 18'1"   |
| C             | 17' 1"  | 19'9"   |
| D             | 3' 8"   | 3'8"    |

A rigid cab elevation has a fixed eye level height. For a lower transport height, the shell of the cab can be removed and replaced by a transport device. The dimension C is in this machine design for all rigid cab elevations 13'.

## Cab Elevation LHC (Hydraulic Elevation)



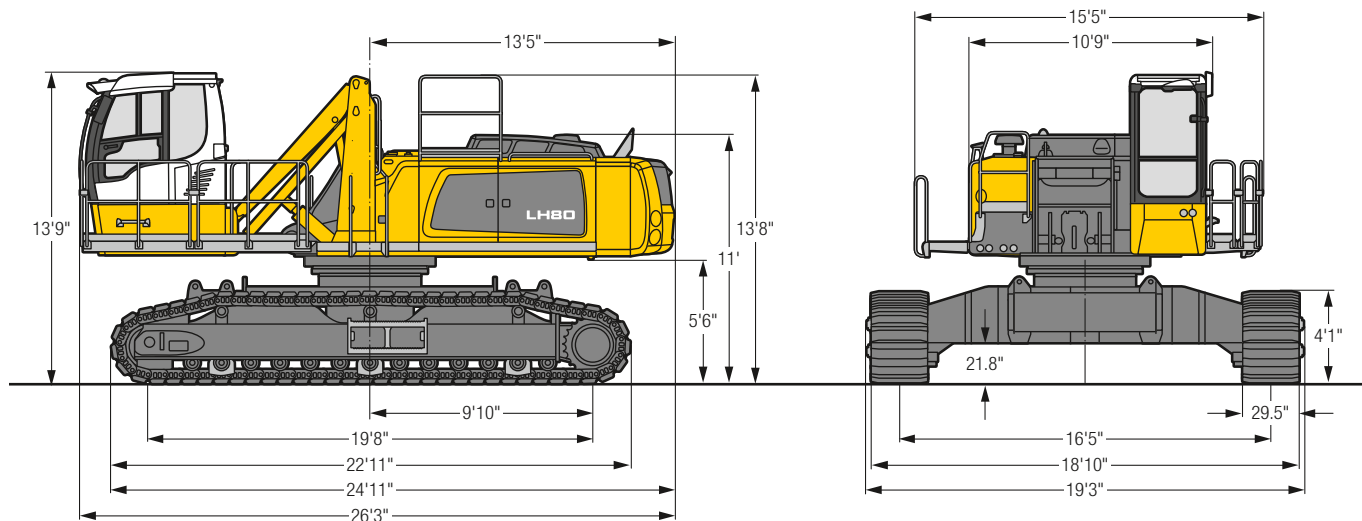
| Increase type | LHC 255 | LHC 340-35 | LHC 360-50 |
|---------------|---------|------------|------------|
| B1            | 11' 6"  | 12' 8"     | 13' 2"     |
| B2            | 19'10"  | 23'10"     | 24'10"     |
| C1            | 13' 2"  | 14' 4"     | 14'10"     |
| C2            | 21' 6"  | 25' 6"     | 26' 6"     |
| D1            | 5' 6"   | 9' 2"      | 9' 4"      |
| D2            | 5'11"   | 9' 2"      | 9'10"      |
| E             | 12'10"  | 14' 2"     | 14' 7"     |

The hydraulically adjustable cab allows the driver, that he can choose his field of view freely and at any time within the stroke.

Tires 23.5-25

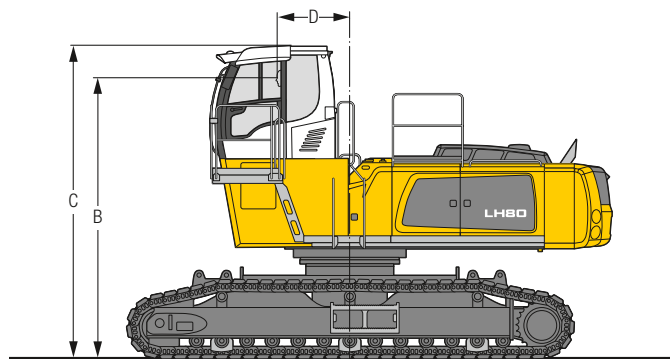
# LH 80 C SW – Dimensions

## Port



# LH 80 C SW – Choice of Cab Elevation

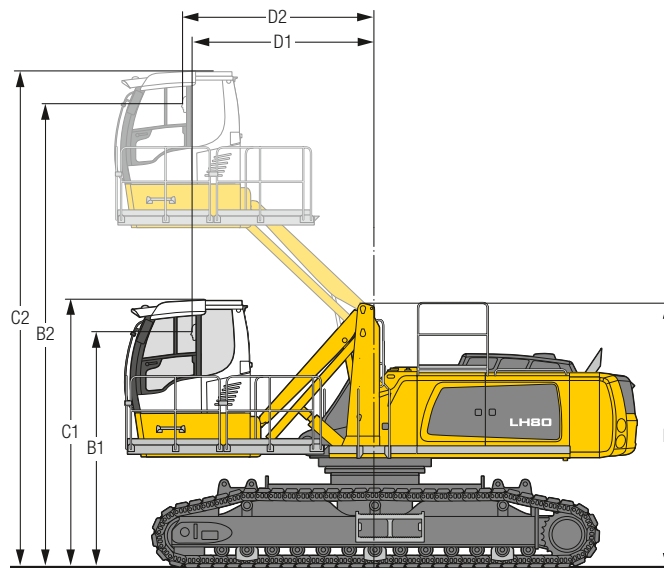
## Cab Elevation LFC (Rigid Elevation)



| Increase type | LFC 120 | LFC 200 |
|---------------|---------|---------|
| Height        | 3'11"   | 6'7"    |
| B             | 14' 4"  | 17' "   |
| C             | 16' 1"  | 18'8"   |
| D             | 3' 8"   | 3'8"    |

A rigid cab elevation has a fixed eye level height. For a lower transport height, the shell of the cab can be removed and replaced by a transport device. The dimension C is in this machine design for all rigid cab elevations 13'1".

## Cab Elevation LHC (Hydraulic Elevation)

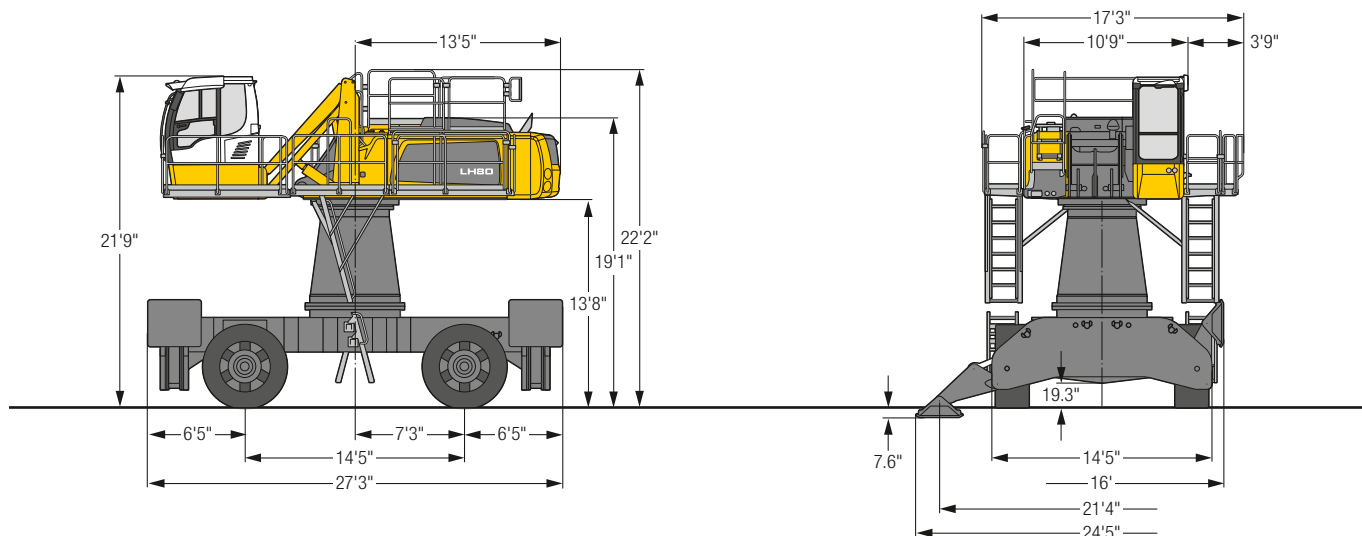


| Increase type | LHC 255 | LHC 340-35 | LHC 360-50 |
|---------------|---------|------------|------------|
| B1            | 10' 5"  | 11'7"      | 12' 1"     |
| B2            | 18' 9"  | 22'9"      | 23' 9"     |
| C1            | 12' 1"  | 13'3"      | 13' 9"     |
| C2            | 20' 6"  | 24'6"      | 25' 6"     |
| D1            | 5' 6"   | 9'2"       | 9' 4"      |
| D2            | 5'11"   | 9'2"       | 9'10"      |
| E             | 11' 9"  | 13'1"      | 13' 7"     |

The hydraulically adjustable cab allows the driver, that he can choose his field of view freely and at any time within the stroke.

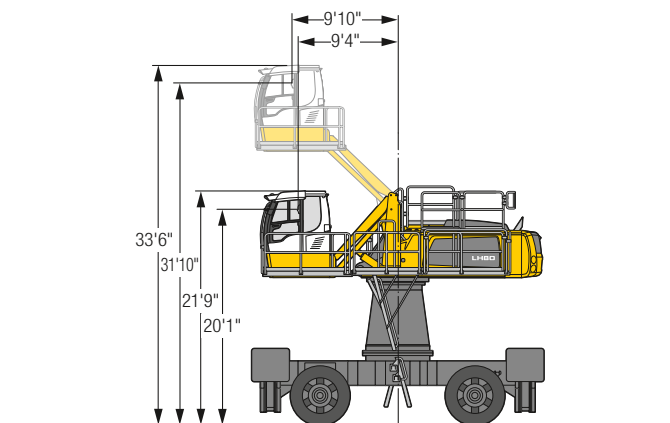
# LH 80 M HR – Dimensions

## Port



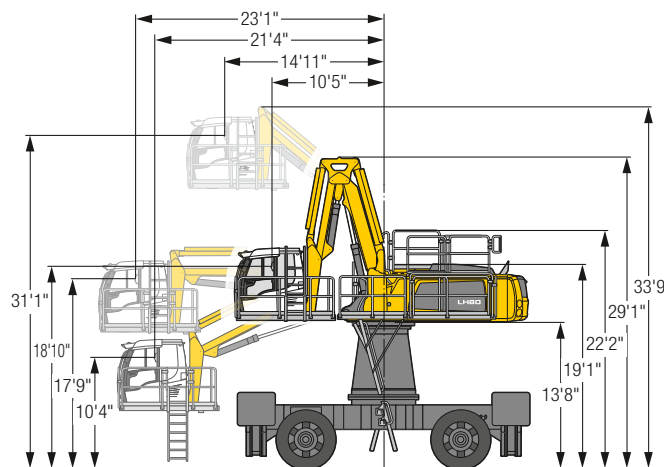
# LH 80 M HR – Choice of Cab Elevation

## Cab Elevation LHC (Hydraulic Elevation)



**Increase type** **LHC 360-50**  
 The hydraulically adjustable cab allows the driver, that he can choose his field of view freely and at any time within the stroke.

## Cab Elevation LHC-D (Hydraulic Elevation)



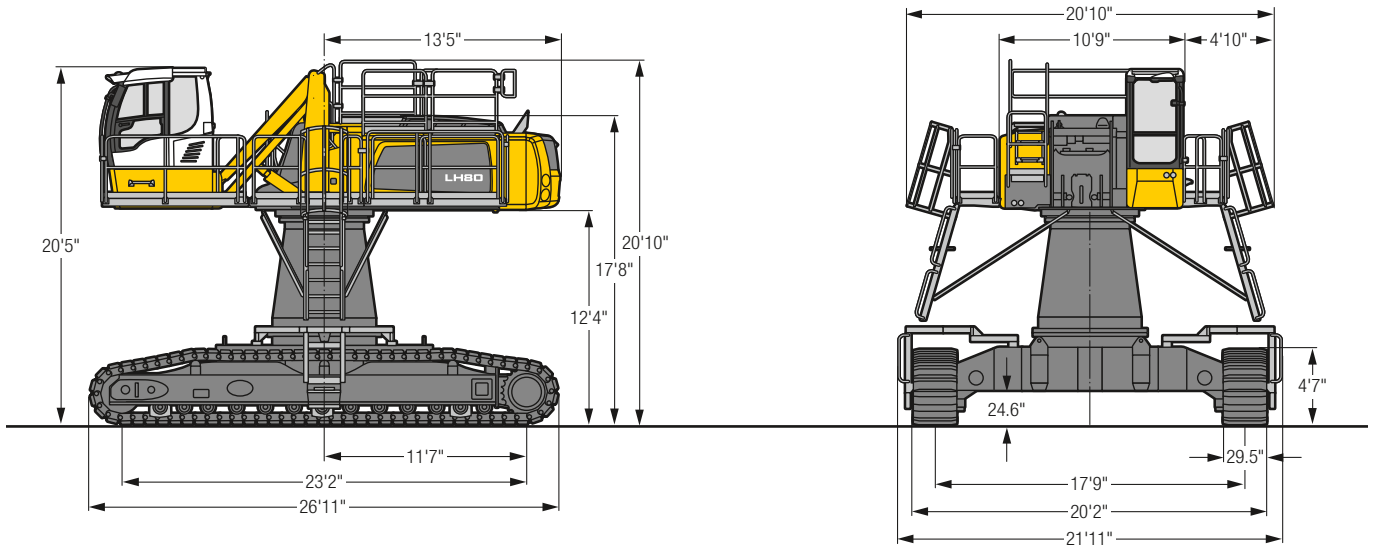
**Increase type** **LHC-D 730**  
 The hydraulically adjustable cab allows the driver, that he can choose his field of view freely and at any time within the stroke.

Tires 26.5-25



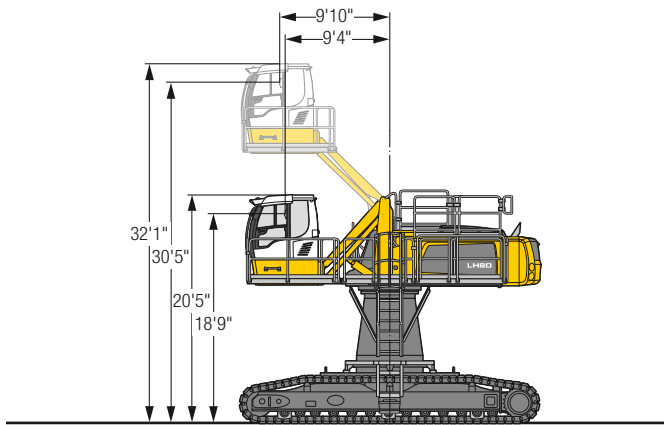
# LH 80 C HR – Dimensions

## Port



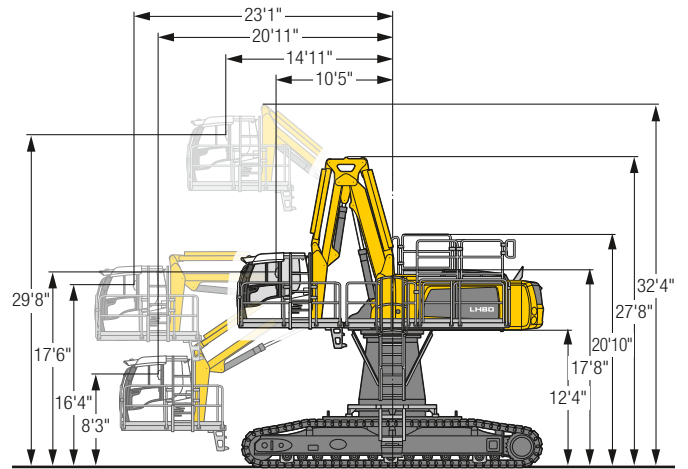
# LH 80 C HR – Choice of Cab Elevation

## Cab Elevation LHC (Hydraulic Elevation)



**Increase type** **LHC 360-50**  
 The hydraulically adjustable cab allows the driver, that he can choose his field of view freely and at any time within the stroke.

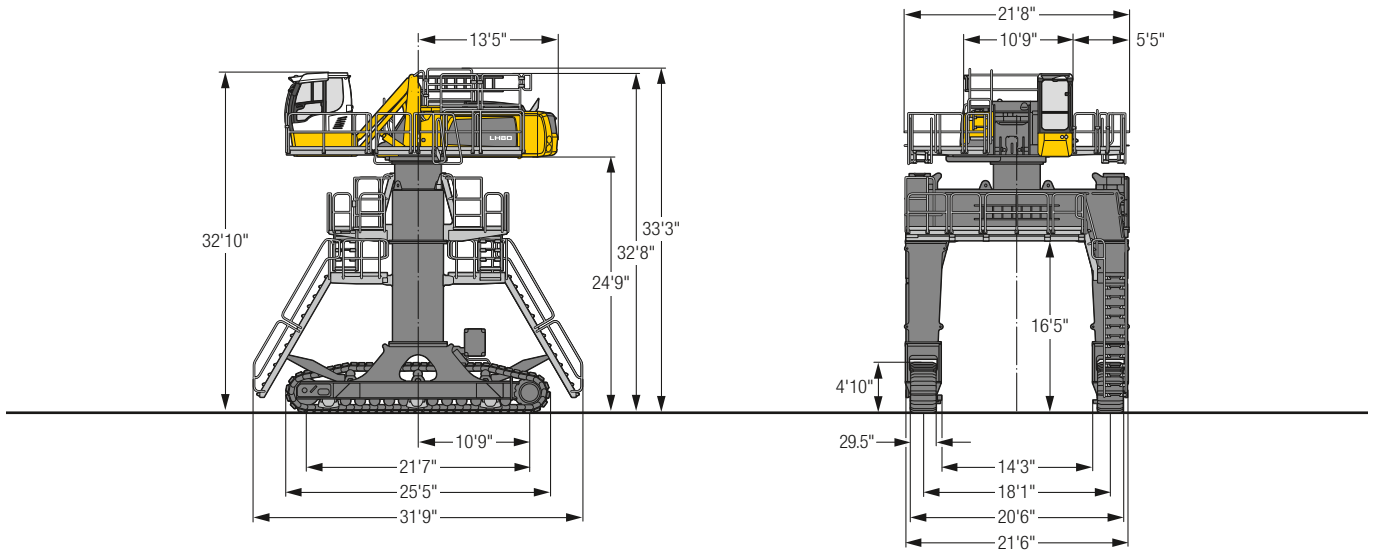
## Cab Elevation LHC-D (Hydraulic Elevation)



**Increase type** **LHC-D 730**  
 The hydraulically adjustable cab allows the driver, that he can choose his field of view freely and at any time within the stroke.

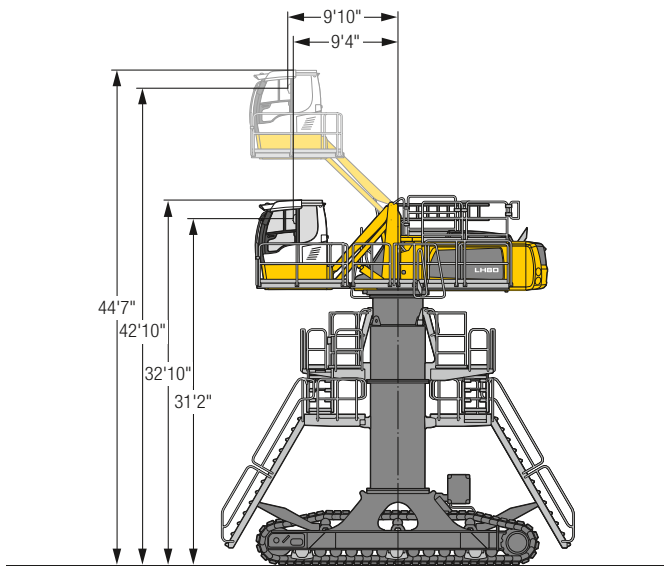
# LH 80 C Gantry – Dimensions

## Port



# LH 80 C Gantry – Cab Elevation

## Cab Elevation LHC (Hydraulic Elevation)



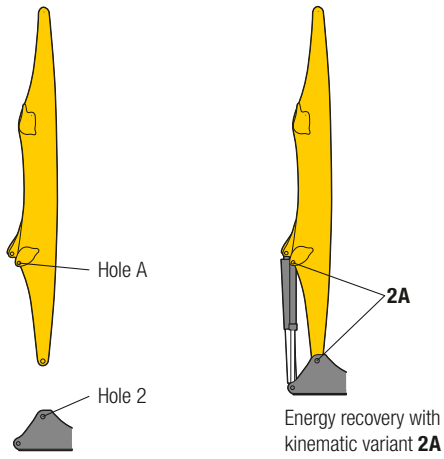
### Increase type

### LHC 360-50

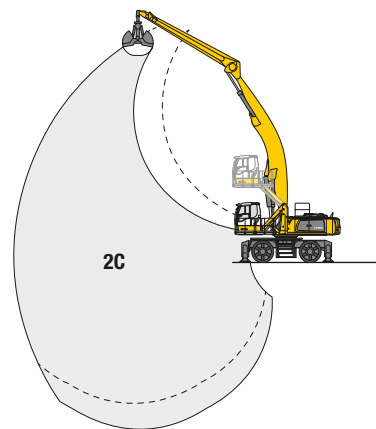
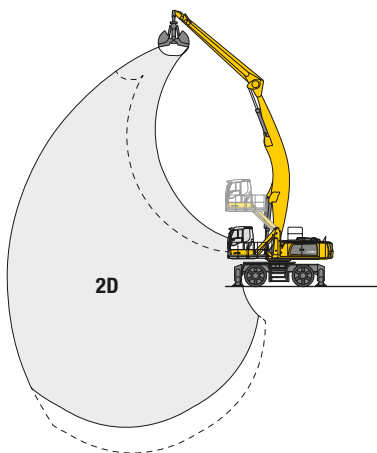
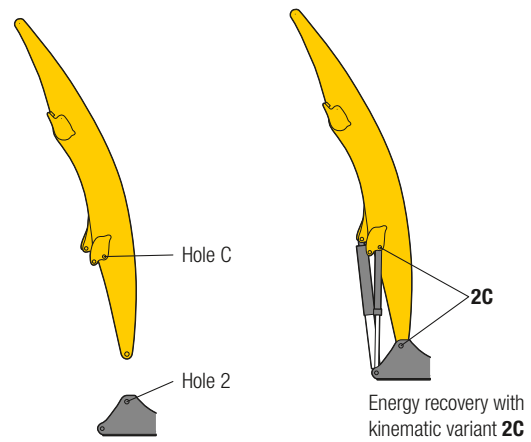
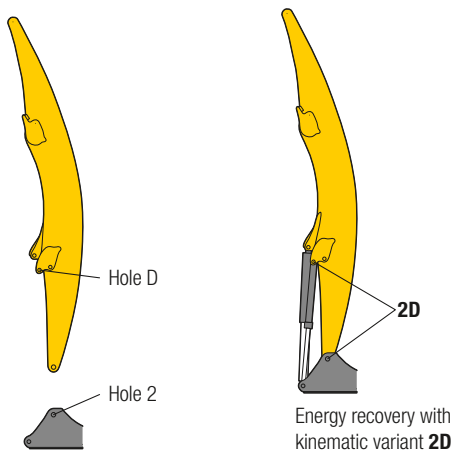
The hydraulically adjustable cab allows the driver, that he can choose his field of view freely and at any time within the stroke.



## Kinematic Variant 2A



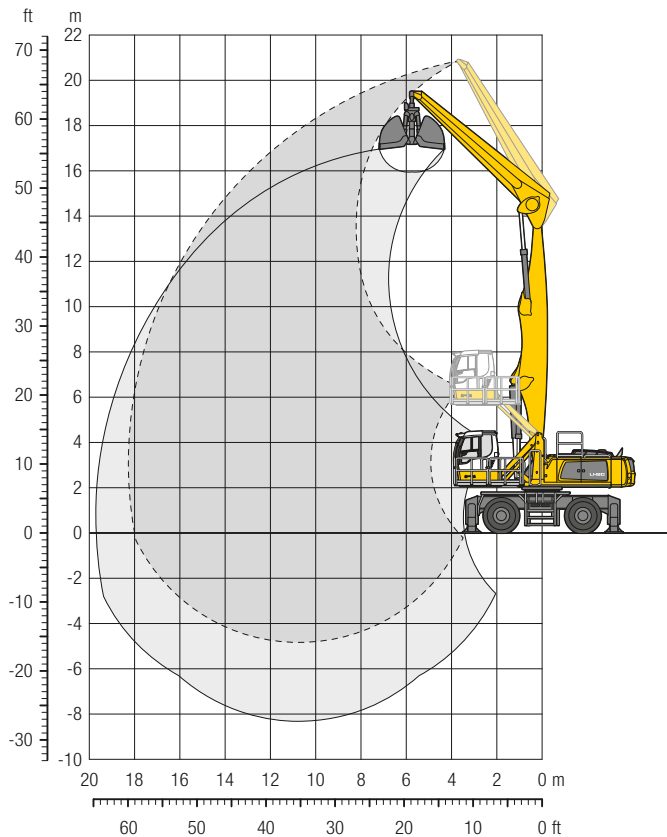
## Kinematic Variant 2D/2C



Altered range curve with additional reach depth, e.g. for unloading from ships

# LH 80 M – Equipment GG18

## Port – Kinematic 2A

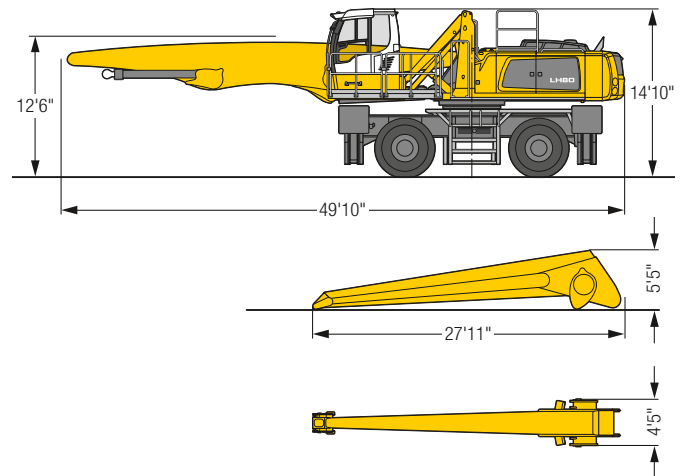


### Operating Weight

The operating weight includes the basic machine with 4 point outriggers, hydr. cab elevation, 4 solid tires, straight boom 34'5", straight stick 26'3" and grab for loose material GMZ 80/10.46 yd<sup>3</sup>.

Weight 178,400 lb

### Dimensions



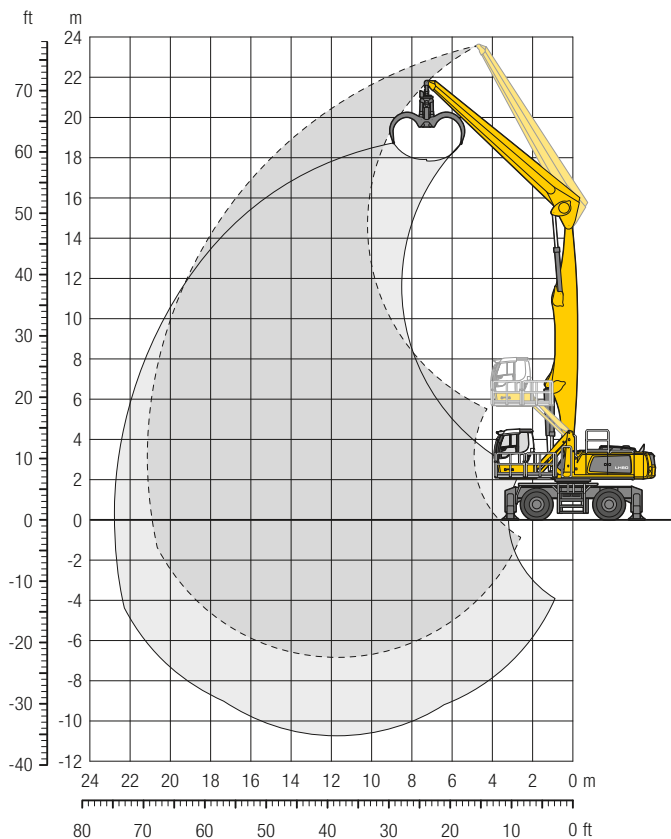
|            |                         | 20 ft | 25 ft | 30 ft | 35 ft | 40 ft | 45 ft | 50 ft | 55 ft | 60 ft | 65 ft | 70 ft | 75 ft | 80 ft |             | ft in                     |
|------------|-------------------------|-------|-------|-------|-------|-------|-------|-------|-------|-------|-------|-------|-------|-------|-------------|---------------------------|
|            | <b>ft Undercarriage</b> |       |       |       |       |       |       |       |       |       |       |       |       |       |             |                           |
| <b>75</b>  | 4 pt. outriggers down   |       |       |       |       |       |       |       |       |       |       |       |       |       |             |                           |
| <b>70</b>  | 4 pt. outriggers down   |       |       |       |       |       |       |       |       |       |       |       |       |       |             |                           |
| <b>65</b>  | 4 pt. outriggers down   | 44,4" | 44,4" |       |       |       |       |       |       |       |       |       |       |       |             | 37,3" 37,3" <b>24' 1"</b> |
| <b>60</b>  | 4 pt. outriggers down   |       | 42,7" | 42,7" | 36,9" | 36,9" |       |       |       |       |       |       |       |       |             | 30,4" 30,4" <b>33' 5"</b> |
| <b>55</b>  | 4 pt. outriggers down   |       | 44,5" | 44,5" | 40,1" | 40,1" | 36,3" | 36,3" |       |       |       |       |       |       |             | 27,0" 27,0" <b>39'11"</b> |
| <b>50</b>  | 4 pt. outriggers down   |       |       |       | 39,2" | 39,2" | 35,5" | 35,5" | 32,8" | 32,8" |       |       |       |       |             | 25,0" 25,0" <b>45'</b>    |
| <b>45</b>  | 4 pt. outriggers down   |       |       |       | 38,8" | 38,8" | 35,2" | 35,2" | 32,4" | 32,4" | 30,1" | 30,1" |       |       |             | 23,7" 23,7" <b>48'11"</b> |
| <b>40</b>  | 4 pt. outriggers down   |       |       |       | 39,0" | 39,0" | 35,3" | 35,3" | 32,3" | 32,3" | 29,9" | 29,9" | 27,9" | 27,9" |             | 22,8" 22,8" <b>52' 2"</b> |
| <b>35</b>  | 4 pt. outriggers down   |       | 45,0" | 45,0" | 39,7" | 39,7" | 35,7" | 35,7" | 32,6" | 32,6" | 30,0" | 30,0" | 27,9" | 27,9" |             | 22,3" 22,3" <b>54' 8"</b> |
| <b>30</b>  | 4 pt. outriggers down   |       | 46,8" | 46,8" | 41,0" | 41,0" | 36,6" | 36,6" | 33,1" | 33,1" | 30,3" | 30,3" | 27,9" | 27,9" | 25,5" 25,7" | 22,0" 22,0" <b>56' 8"</b> |
| <b>25</b>  | 4 pt. outriggers down   | 46,0" | 46,0" | 49,4" | 49,4" | 42,6" | 42,6" | 37,7" | 37,7" | 33,8" | 33,8" | 30,7" | 30,7" | 28,1" | 28,1"       | 21,9" 21,9" <b>58' 2"</b> |
| <b>20</b>  | 4 pt. outriggers down   | 62,9" | 62,9" | 52,5" | 52,5" | 44,6" | 44,6" | 38,9" | 38,9" | 34,6" | 34,6" | 31,2" | 31,2" | 28,3" | 28,3"       | 22,0" 22,0" <b>59' 2"</b> |
| <b>15</b>  | 4 pt. outriggers down   | 69,9" | 69,9" | 55,7" | 55,7" | 46,6" | 46,6" | 40,2" | 40,2" | 35,4" | 35,4" | 31,6" | 31,6" | 28,5" | 28,5"       | 21,7" 22,0" <b>59'10"</b> |
| <b>10</b>  | 4 pt. outriggers down   | 74,4" | 74,4" | 58,4" | 58,4" | 48,3" | 48,3" | 41,2" | 41,2" | 36,0" | 36,0" | 31,9" | 31,9" | 28,2" | 28,4"       | 20,8" 20,8" <b>60'</b>    |
| <b>5</b>   | 4 pt. outriggers down   | 35,7" | 35,7" | 59,8" | 59,8" | 49,2" | 49,2" | 41,8" | 41,8" | 36,2" | 36,2" | 31,8" | 31,8" | 27,7" | 28,0"       | 19,4" 19,4" <b>59' 8"</b> |
| <b>0</b>   | 4 pt. outriggers down   | 30,3" | 30,3" | 59,2" | 59,2" | 48,9" | 48,9" | 41,4" | 41,4" | 35,7" | 35,7" | 31,1" | 31,1" | 26,9" | 26,9"       | 17,7" 17,7" <b>59'</b>    |
| <b>- 5</b> | 4 pt. outriggers down   | 31,6" | 31,6" | 56,2" | 56,2" | 47,0" | 47,0" | 39,9" | 39,9" | 34,3" | 34,3" | 29,5" | 29,5" | 25,0" | 25,0"       | 18,3" 18,3" <b>56' 4"</b> |
| <b>-10</b> | 4 pt. outriggers down   | 35,3" | 35,3" | 50,4" | 50,4" | 43,0" | 43,0" | 36,8" | 36,8" | 31,5" | 31,5" | 26,7" | 26,7" | 21,8" | 21,8"       | 20,2" 20,2" <b>51' 6"</b> |
| <b>-15</b> | 4 pt. outriggers down   |       |       |       |       | 36,6" | 36,6" | 31,7" | 31,7" | 26,9" | 26,9" |       |       |       |             | 26,0" 26,0" <b>40'11"</b> |
| <b>-20</b> | 4 pt. outriggers down   |       |       |       |       |       |       |       |       |       |       |       |       |       |             |                           |

**Height** **Can be slewed through 360°** **In longitudinal position of undercarriage** **Max. reach** \* Limited by hydr. capacity

The lift capacities on the stick end without attachment are stated in lb x 1,000 and are valid on a firm, level supporting surface with blocked oscillating axle. These capacities can be slewed through 360° with the undercarriage in the transverse position. Capacities in the longitudinal position of the undercarriage (+/- 15°) are specified over the rigid axle with the stabilizers down. Indicated loads based on the ISO 10567 standard and do not exceed 75% of tipping or 87% of hydraulic capacity. The lift capacity values indicated are attained at the corresponding operating temperature. This operating temperature is ensured by continuous movement of the boom. Weights of fitted attachments (grabs, load hooks, etc.) and load accommodation attachment are to be deducted from the lift capacity values. The lift capacity of the unit is limited by its stability, the lifting capability of the hydraulic elements, or the maximum permissible lifting capacity of the load hook.

# LH 80 M – Equipment GG21

## Port – Kinematic 2A

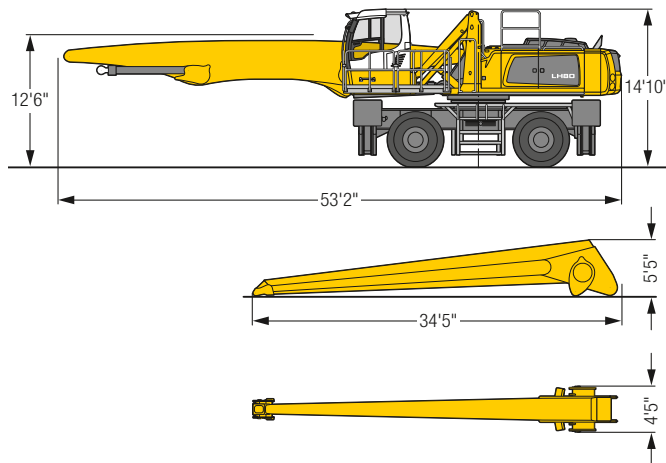


### Operating Weight

The operating weight includes the basic machine with 4 point outriggers, hydr. cab elevation, 4 solid tires, straight boom 37'9", straight stick 32'10" and wood grab GMH 80/2.63 yd<sup>2</sup>.

Weight 177,400 lb

### Dimensions



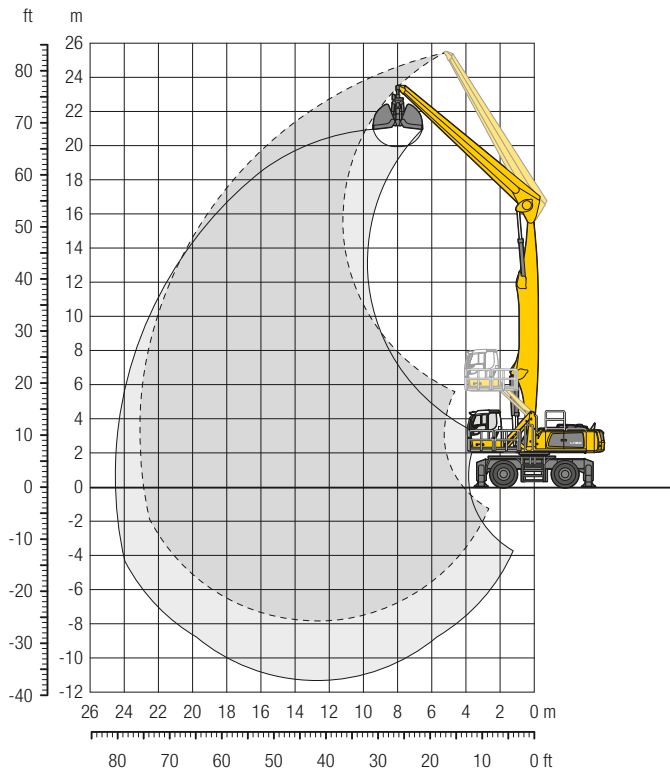
| ft  | Undercarriage         | Reach (ft) |       |       |       |       |       |       |       |       |       |       |       |       |       |       |       | ft in |         |        |       |
|-----|-----------------------|------------|-------|-------|-------|-------|-------|-------|-------|-------|-------|-------|-------|-------|-------|-------|-------|-------|---------|--------|-------|
|     |                       | 20 ft      | 25 ft | 30 ft | 35 ft | 40 ft | 45 ft | 50 ft | 55 ft | 60 ft | 65 ft | 70 ft | 75 ft | 80 ft | 80 ft |       |       |       |         |        |       |
| 75  | 4 pt. outriggers down | 37,5*      | 37,5* |       |       |       |       |       |       |       |       |       |       |       |       |       | 31,9* | 31,9* | 24' 6"  |        |       |
| 70  | 4 pt. outriggers down |            |       | 31,7* | 31,7* | 25,7* | 25,7* |       |       |       |       |       |       |       |       |       | 25,4* | 25,4* | 35' 2"  |        |       |
| 65  | 4 pt. outriggers down |            |       | 34,3* | 34,3* | 31,0* | 31,0* | 26,3* | 26,3* |       |       |       |       |       |       |       | 22,3* | 22,3* | 42' 7"  |        |       |
| 60  | 4 pt. outriggers down |            |       |       |       | 32,6* | 32,6* | 29,8* | 29,8* | 25,7* | 25,7* |       |       |       |       |       | 20,4* | 20,4* | 48' 5"  |        |       |
| 55  | 4 pt. outriggers down |            |       |       |       | 32,0* | 32,0* | 29,3* | 29,3* | 27,1* | 27,1* | 24,4* | 24,4* |       |       |       | 19,1* | 19,1* | 53' 1"  |        |       |
| 50  | 4 pt. outriggers down |            |       |       |       | 31,7* | 31,7* | 29,0* | 29,0* | 26,8* | 26,8* | 25,0* | 25,0* | 22,1* | 22,1* |       | 18,3* | 18,3* | 57'     |        |       |
| 45  | 4 pt. outriggers down |            |       |       |       | 31,7* | 31,7* | 29,0* | 29,0* | 26,7* | 26,7* | 24,9* | 24,9* | 23,3* | 23,3* | 18,1* | 18,1* |       | 60' 2"  |        |       |
| 40  | 4 pt. outriggers down |            |       |       |       | 32,0* | 32,0* | 29,2* | 29,2* | 26,9* | 26,9* | 24,9* | 24,9* | 23,3* | 23,3* | 21,8* | 21,8* |       | 62' 10" |        |       |
| 35  | 4 pt. outriggers down |            |       |       |       | 32,6* | 32,6* | 29,6* | 29,6* | 27,1* | 27,1* | 25,1* | 25,1* | 23,3* | 23,3* | 21,8* | 21,8* |       | 64' 11" |        |       |
| 30  | 4 pt. outriggers down |            |       | 37,2* | 37,2* | 33,4* | 33,4* | 30,2* | 30,2* | 27,6* | 27,6* | 25,4* | 25,4* | 23,5* | 23,5* | 21,8* | 21,8* | 19,3  | 20,1*   |        |       |
| 25  | 4 pt. outriggers down |            | 35,9* | 35,9* | 39,1* | 39,1* | 34,5* | 34,5* | 31,0* | 31,0* | 28,1* | 28,1* | 25,7* | 25,7* | 23,7* | 23,7* | 21,9* | 21,9* | 19,2    | 20,0*  |       |
| 20  | 4 pt. outriggers down | 34,8*      | 34,8* | 43,5* | 43,5* | 41,0* | 41,0* | 35,8* | 35,8* | 31,8* | 31,8* | 28,7* | 28,7* | 26,1* | 26,1* | 23,9* | 23,9* | 21,8  | 21,9*   | 19,0   | 20,0* |
| 15  | 4 pt. outriggers down | 63,1*      | 63,1* | 51,2* | 51,2* | 43,0* | 43,0* | 37,1* | 37,1* | 32,7* | 32,7* | 29,3* | 29,3* | 26,4* | 26,4* | 24,1* | 24,1* | 21,5  | 21,9*   | 18,8   | 19,8* |
| 10  | 4 pt. outriggers down | 68,6*      | 68,6* | 54,1* | 54,1* | 44,8* | 44,8* | 38,3* | 38,3* | 33,5* | 33,5* | 29,7* | 29,7* | 26,7* | 26,7* | 24,1* | 24,1* | 21,1  | 21,8*   | 18,5   | 19,4* |
| 5   | 4 pt. outriggers down | 39,6*      | 39,6* | 56,2* | 56,2* | 46,2* | 46,2* | 39,2* | 39,2* | 34,0* | 34,0* | 30,0* | 30,0* | 26,8* | 26,8* | 23,6  | 24,0* | 20,7  | 21,5*   | 18,3   | 18,8* |
| 0   | 4 pt. outriggers down | 26,6*      | 26,6* | 56,8* | 56,8* | 46,7* | 46,7* | 39,5* | 39,5* | 34,2* | 34,2* | 30,0* | 30,0* | 26,6* | 26,6* | 23,1  | 23,6* | 20,4  | 20,8*   | 17,7*  | 17,7* |
| -5  | 4 pt. outriggers down | 24,9*      | 24,9* | 49,5* | 49,5* | 46,1* | 46,1* | 39,1* | 39,1* | 33,7* | 33,7* | 29,5* | 29,5* | 25,9* | 25,9* | 22,7  | 22,7* | 19,6* | 19,6*   | 16,0*  | 16,0* |
| -10 | 4 pt. outriggers down | 26,3*      | 26,3* | 44,9* | 44,9* | 44,1* | 44,1* | 37,6* | 37,6* | 32,5* | 32,5* | 28,2* | 28,2* | 24,6* | 24,6* | 21,2* | 21,2* | 17,7* | 17,7*   |        |       |
| -15 | 4 pt. outriggers down | 29,0*      | 29,0* | 44,9* | 44,9* | 40,4* | 40,4* | 34,8* | 34,8* | 30,1* | 30,1* | 26,1* | 26,1* | 22,4* | 22,4* | 18,8* | 18,8* |       |         |        |       |
| -20 | 4 pt. outriggers down |            |       | 34,9* | 34,9* | 30,4* | 30,4* | 26,4* | 26,4* | 22,6* | 22,6* | 19,0* | 19,0* |       |       |       |       | 15,6* | 15,6*   | 59'    |       |
|     |                       |            |       |       |       |       |       |       |       |       |       |       |       |       |       |       |       | 18,8* | 18,8*   | 50' 4" |       |

**Height** **Can be slewed through 360°** **In longitudinal position of undercarriage** **Max. reach** **\* Limited by hydr. capacity**

The lift capacities on the stick end without attachment are stated in lb x 1,000 and are valid on a firm, level supporting surface with blocked oscillating axle. These capacities can be slewed through 360° with the undercarriage in the transverse position. Capacities in the longitudinal position of the undercarriage (+/- 15°) are specified over the rigid axle with the stabilizers down. Indicated loads based on the ISO 10567 standard and do not exceed 75% of tipping or 87% of hydraulic capacity. The lift capacity values indicated are attained at the corresponding operating temperature. This operating temperature is ensured by continuous movement of the boom. Weights of fitted attachments (grabs, load hooks, etc.) and load accommodation attachment are to be deducted from the lift capacity values. The lift capacity of the unit is limited by its stability, the lifting capability of the hydraulic elements, or the maximum permissible lifting capacity of the load hook.

# LH 80 M – Equipment GG23

## Port – Kinematic 2A

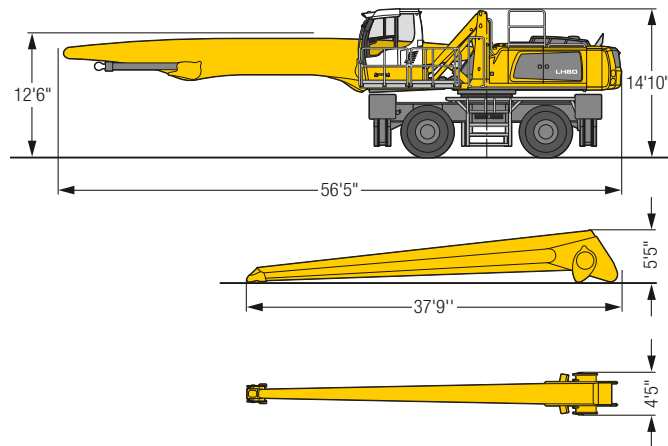


### Operating Weight

The operating weight includes the basic machine with 4 point outriggers, hydr. cab elevation, 4 solid tires, straight boom 41', straight stick 36'1" and grab for loose material GMZ 80/ 7.85 yd<sup>3</sup>.

|        |            |
|--------|------------|
| Weight | 181,100 lb |
|--------|------------|

### Dimensions



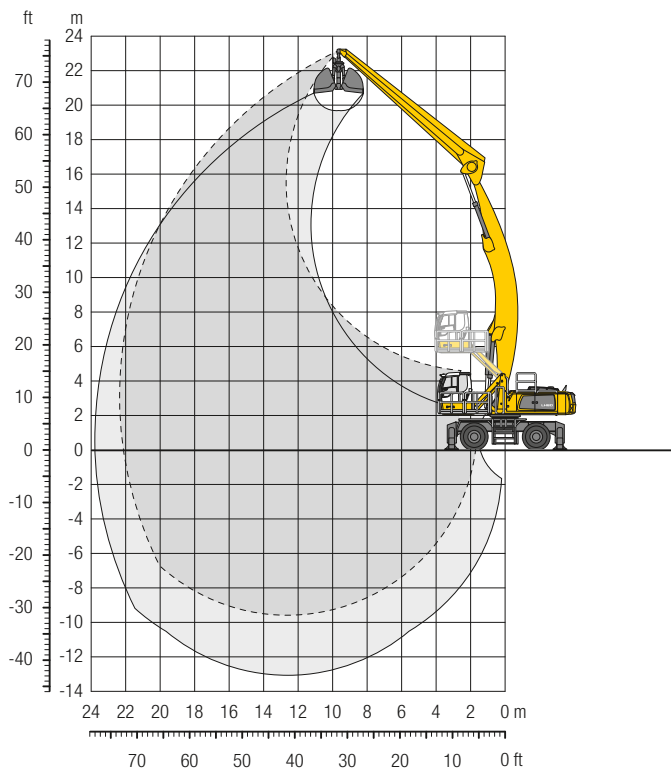
| ft  | Undercarriage         | 20 ft       | 25 ft       | 30 ft       | 35 ft       | 40 ft       | 45 ft       | 50 ft       | 55 ft       | 60 ft       | 65 ft       | 70 ft       | 75 ft       | 80 ft | ft in               |
|-----|-----------------------|-------------|-------------|-------------|-------------|-------------|-------------|-------------|-------------|-------------|-------------|-------------|-------------|-------|---------------------|
| 80  | 4 pt. outriggers down |             | 31,5° 31,5° | 26,0° 26,0° |             |             |             |             |             |             |             |             |             |       | 25,9° 25,9° 30° 1"  |
| 75  | 4 pt. outriggers down |             |             | 30,6° 30,6° | 26,9° 26,9° |             |             |             |             |             |             |             |             |       | 21,3° 21,3° 39° 11" |
| 70  | 4 pt. outriggers down |             |             |             | 29,6° 29,6° | 26,6° 26,6° | 22,0° 22,0° |             |             |             |             |             |             |       | 18,9° 18,9° 47° 1"  |
| 65  | 4 pt. outriggers down |             |             |             | 30,8° 30,8° | 28,3° 28,3° | 26,0° 26,0° | 21,6° 21,6° |             |             |             |             |             |       | 17,3° 17,3° 52° 11" |
| 60  | 4 pt. outriggers down |             |             |             |             | 27,8° 27,8° | 25,5° 25,5° | 23,6° 23,6° | 20,5° 20,5° |             |             |             |             |       | 16,3° 16,3° 57° 7"  |
| 55  | 4 pt. outriggers down |             |             |             |             | 27,6° 27,6° | 25,3° 25,3° | 23,4° 23,4° | 21,8° 21,8° | 18,5° 18,5° |             |             |             |       | 15,5° 15,5° 61° 7"  |
| 50  | 4 pt. outriggers down |             |             |             |             | 27,5° 27,5° | 25,2° 25,2° | 23,3° 23,3° | 21,7° 21,7° | 20,3° 20,3° |             |             |             |       | 14,9° 14,9° 65°     |
| 45  | 4 pt. outriggers down |             |             |             |             | 27,6° 27,6° | 25,3° 25,3° | 23,3° 23,3° | 21,6° 21,6° | 20,2° 20,2° | 18,9° 18,9° |             |             |       | 14,5° 14,5° 67° 10" |
| 40  | 4 pt. outriggers down |             |             |             | 30,9° 30,9° | 27,9° 27,9° | 25,4° 25,4° | 23,4° 23,4° | 21,7° 21,7° | 20,2° 20,2° | 18,8° 18,8° | 14,6° 14,6° |             |       | 14,3° 14,3° 70° 1"  |
| 35  | 4 pt. outriggers down |             |             |             | 31,5° 31,5° | 28,3° 28,3° | 25,8° 25,8° | 23,6° 23,6° | 21,8° 21,8° | 20,3° 20,3° | 18,8° 18,8° | 16,9 17,4°  |             |       | 14,1° 14,1° 72°     |
| 30  | 4 pt. outriggers down |             |             | 32,4° 32,4° | 32,3° 32,3° | 28,9° 28,9° | 26,2° 26,2° | 23,9° 23,9° | 22,0° 22,0° | 20,4° 20,4° | 18,9° 18,9° | 16,8 17,4°  |             |       | 14,0° 14,0° 73° 7"  |
| 25  | 4 pt. outriggers down |             |             | 35,7° 35,7° | 33,3° 33,3° | 29,6° 29,6° | 26,7° 26,7° | 24,3° 24,3° | 22,2° 22,2° | 20,5° 20,5° | 18,9° 18,9° | 16,7 17,4°  |             |       | 14,0° 14,0° 74° 8"  |
| 20  | 4 pt. outriggers down | 29,1° 29,1° | 37,6° 37,6° | 39,6° 39,6° | 34,4° 34,4° | 30,4° 30,4° | 27,2° 27,2° | 24,6° 24,6° | 22,5° 22,5° | 20,6° 20,6° | 18,8 18,9°  | 16,4 17,3°  | 14,4 15,2°  |       | 14,0° 14,0° 75° 6"  |
| 15  | 4 pt. outriggers down | 55,7° 55,7° | 49,5° 49,5° | 41,3° 41,3° | 35,5° 35,5° | 31,1° 31,1° | 27,7° 27,7° | 25,0° 25,0° | 22,7° 22,7° | 20,7° 20,7° | 18,4 18,9°  | 16,2 17,1°  | 14,3 14,9°  |       | 13,9 14,2° 76°      |
| 10  | 4 pt. outriggers down | 66,0° 66,0° | 51,9° 51,9° | 42,8° 42,8° | 36,5° 36,5° | 31,8° 31,8° | 28,1° 28,1° | 25,2° 25,2° | 22,8° 22,8° | 20,6 20,7°  | 18,0 18,7°  | 15,9 16,8°  | 14,1 14,3°  |       | 13,5° 13,5° 76° 1"  |
| 5   | 4 pt. outriggers down | 28,3° 28,3° | 53,6° 53,6° | 43,9° 43,9° | 37,2° 37,2° | 32,3° 32,3° | 28,4° 28,4° | 25,3° 25,3° | 22,8° 22,8° | 20,1 20,5°  | 17,7 18,4°  | 15,7 16,3°  | 13,5° 13,5° |       | 12,7° 12,7° 75° 11" |
| 0   | 4 pt. outriggers down | 19,7° 19,7° | 47,6° 47,6° | 44,4° 44,4° | 37,5° 37,5° | 32,4° 32,4° | 28,4° 28,4° | 25,2° 25,2° | 22,3 22,5°  | 19,6 20,2°  | 17,3 17,9°  | 15,5 15,5°  | 12,1° 12,1° |       | 11,7° 11,7° 75° 4"  |
| -5  | 4 pt. outriggers down | 18,8° 18,8° | 36,1° 36,1° | 43,8° 43,8° | 37,2° 37,2° | 32,1° 32,1° | 28,1° 28,1° | 24,8° 24,8° | 21,8 22,0°  | 19,2 19,5°  | 17,0 17,1°  | 14,3° 14,3° |             |       | 10,7° 10,7° 74° 4"  |
| -10 | 4 pt. outriggers down | 20,1° 20,1° | 33,4° 33,4° | 42,2° 42,2° | 36,0° 36,0° | 31,1° 31,1° | 27,2° 27,2° | 23,9° 23,9° | 21,1° 21,1° | 18,4° 18,4° | 15,7° 15,7° | 12,5° 12,5° |             |       | 11,2° 11,2° 71° 5"  |
| -15 | 4 pt. outriggers down | 22,4° 22,4° | 33,7° 33,7° | 39,2° 39,2° | 33,8° 33,8° | 29,3° 29,3° | 25,6° 25,6° | 22,4° 22,4° | 19,5° 19,5° | 16,7° 16,7° | 13,7° 13,7° |             |             |       | 12,1° 12,1° 67° 2"  |
| -20 | 4 pt. outriggers down |             | 35,4° 35,4° | 34,7° 34,7° | 30,4° 30,4° | 26,5° 26,5° | 23,2° 23,2° | 20,1° 20,1° | 17,2° 17,2° | 14,2° 14,2° |             |             |             |       | 13,6° 13,6° 60° 11" |
| -25 | 4 pt. outriggers down |             |             |             |             | 22,5° 22,5° | 19,6° 19,6° |             |             |             |             |             |             |       | 18,2° 18,2° 47° 6"  |

**Height** **Can be slewed through 360°** **In longitudinal position of undercarriage** **Max. reach** \* Limited by hydr. capacity

The lift capacities on the stick end without attachment are stated in lb x 1,000 and are valid on a firm, level supporting surface with blocked oscillating axle. These capacities can be slewed through 360° with the undercarriage in the transverse position. Capacities in the longitudinal position of the undercarriage (+/- 15°) are specified over the rigid axle with the stabilizers down. Indicated loads based on the ISO 10567 standard and do not exceed 75% of tipping or 87% of hydraulic capacity. The lift capacity values indicated are attained at the corresponding operating temperature. This operating temperature is ensured by continuous movement of the boom. Weights of fitted attachments (grabs, load hooks, etc.) and load accommodation attachment are to be deducted from the lift capacity values. The lift capacity of the unit is limited by its stability, the lifting capability of the hydraulic elements, or the maximum permissible lifting capacity of the load hook.

# LH 80 M – Equipment AG22

## Port – Kinematic 2D

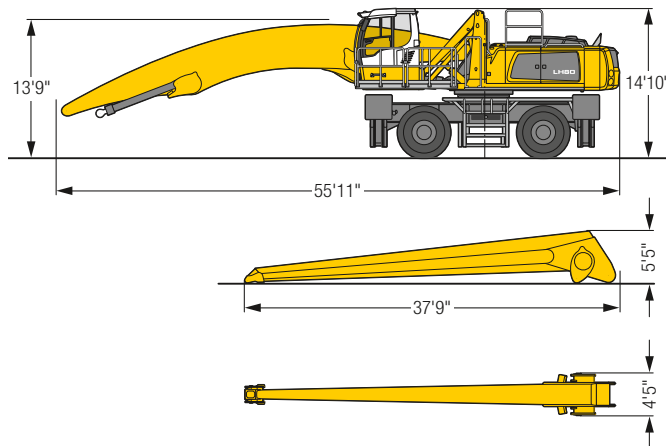


### Operating Weight

The operating weight includes the basic machine with 4 point outriggers, hydr. cab elevation, 4 solid tires, angled boom 41', straight stick 36'1" and grab for loose material GMZ 80/7.85 yd<sup>3</sup>.

Weight 182,600 lb

### Dimensions



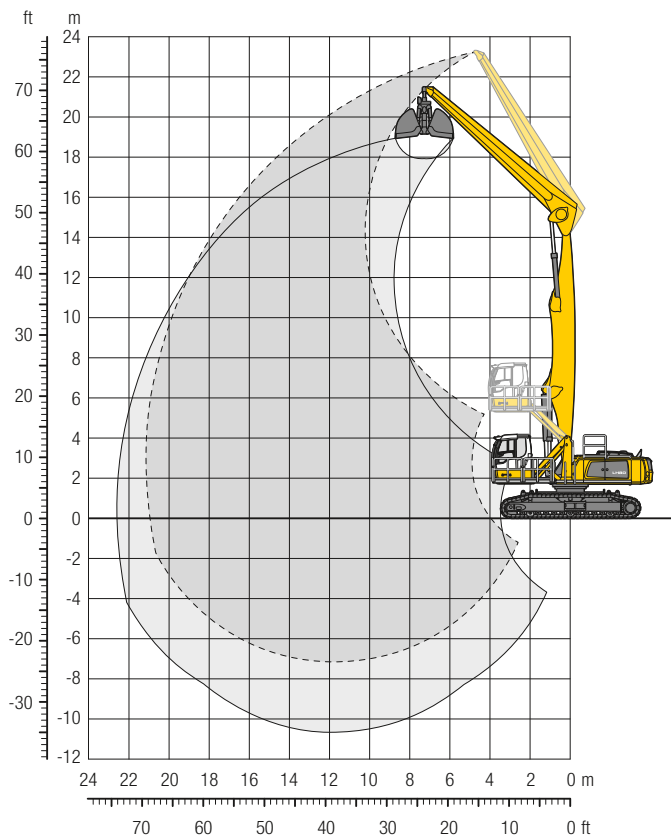
| ft  | Undercarriage         | Reach (ft) |       |       |       |       |       |       |       |       |       |       |       |       |       |       |       | ft in |       |        |        |        |
|-----|-----------------------|------------|-------|-------|-------|-------|-------|-------|-------|-------|-------|-------|-------|-------|-------|-------|-------|-------|-------|--------|--------|--------|
|     |                       | 20 ft      | 25 ft | 30 ft | 35 ft | 40 ft | 45 ft | 50 ft | 55 ft | 60 ft | 65 ft | 70 ft | 75 ft | 80 ft |       |       |       |       |       |        |        |        |
| 75  | 4 pt. outriggers down |            |       |       |       |       |       |       |       |       |       |       |       |       |       |       |       | 21,1" | 21,1" | 34' 2" |        |        |
| 70  | 4 pt. outriggers down |            |       |       |       |       |       | 21,1" | 21,1" |       |       |       |       |       |       |       |       |       | 18,7" | 18,7"  | 42' 6" |        |
| 65  | 4 pt. outriggers down |            |       |       |       |       |       | 23,5" | 23,5" | 21,1" | 21,1" |       |       |       |       |       |       |       | 17,3" | 17,3"  | 48'10" |        |
| 60  | 4 pt. outriggers down |            |       |       |       |       |       |       |       | 21,4" | 21,4" | 20,2" | 20,2" |       |       |       |       |       | 16,4" | 16,4"  | 53'11" |        |
| 55  | 4 pt. outriggers down |            |       |       |       |       |       |       |       | 21,1" | 21,1" | 19,9" | 19,9" | 18,9" | 18,9" |       |       |       | 15,8" | 15,8"  | 58' 2" |        |
| 50  | 4 pt. outriggers down |            |       |       |       |       |       |       |       | 21,0" | 21,0" | 19,7" | 19,7" | 18,7" | 18,7" | 17,7" | 17,7" |       | 15,4" | 15,4"  | 61' 8" |        |
| 45  | 4 pt. outriggers down |            |       |       |       |       |       |       |       | 21,1" | 21,1" | 19,8" | 19,8" | 18,6" | 18,6" | 17,7" | 17,7" |       | 15,2" | 15,2"  | 64' 8" |        |
| 40  | 4 pt. outriggers down |            |       |       |       |       |       |       |       | 23,1" | 23,1" | 21,4" | 21,4" | 19,9" | 19,9" | 18,7" | 18,7" | 17,7" | 17,7" | 16,9"  | 16,9"  | 67' 1" |
| 35  | 4 pt. outriggers down |            |       |       |       |       |       |       |       | 23,6" | 23,6" | 21,7" | 21,7" | 20,2" | 20,2" | 18,9" | 18,9" | 17,9" | 17,9" | 17,0"  | 17,0"  | 69' 1" |
| 30  | 4 pt. outriggers down |            |       |       |       |       |       |       |       | 26,8" | 26,8" | 24,3" | 24,3" | 22,3" | 22,3" | 20,6" | 20,6" | 19,2" | 19,2" | 18,1"  | 18,1"  | 70' 8" |
| 25  | 4 pt. outriggers down |            |       |       |       |       |       |       |       | 27,9" | 27,9" | 25,1" | 25,1" | 22,9" | 22,9" | 21,1" | 21,1" | 19,6" | 19,6" | 18,3"  | 18,3"  | 71'11" |
| 20  | 4 pt. outriggers down |            |       |       |       |       |       |       |       |       |       | 39,2" | 39,2" | 33,5" | 33,5" | 29,3" | 29,3" | 26,1" | 26,1" | 23,6"  | 23,6"  | 72' 8" |
| 15  | 4 pt. outriggers down | 52,7"      | 52,7" | 42,4" | 42,4" | 35,6" | 35,6" | 30,8" | 30,8" | 27,2" | 27,2" | 24,4" | 24,4" | 22,2" | 22,2" | 20,4" | 20,4" | 18,9" | 18,9" | 17,6"  | 17,6"  | 73' 2" |
| 10  | 4 pt. outriggers down | 57,9"      | 57,9" | 45,6" | 45,6" | 37,7" | 37,7" | 32,2" | 32,2" | 28,3" | 28,3" | 25,2" | 25,2" | 22,8" | 22,8" | 20,9" | 20,9" | 19,2" | 19,2" | 17,8"  | 17,8"  | 73' 4" |
| 5   | 4 pt. outriggers down | 45,8"      | 45,8" | 48,4" | 48,4" | 39,6" | 39,6" | 33,6" | 33,6" | 29,3" | 29,3" | 26,0" | 26,0" | 23,4" | 23,4" | 21,3" | 21,3" | 19,5" | 19,5" | 17,9"  | 18,0"  | 73' 1" |
| 0   | 4 pt. outriggers down | 30,0"      | 30,0" | 50,5" | 50,5" | 41,2" | 41,2" | 34,8" | 34,8" | 30,1" | 30,1" | 26,6" | 26,6" | 23,8" | 23,8" | 21,6" | 21,6" | 19,7" | 19,7" | 17,5"  | 18,0"  | 72' 7" |
| -5  | 4 pt. outriggers down | 26,3"      | 26,3" | 45,6" | 45,6" | 42,2" | 42,2" | 35,6" | 35,6" | 30,8" | 30,8" | 27,1" | 27,1" | 24,2" | 24,2" | 21,8" | 21,8" | 19,4" | 19,7" | 17,2"  | 17,9"  | 71' 7" |
| -10 | 4 pt. outriggers down | 26,0"      | 26,0" | 40,1" | 40,1" | 42,5" | 42,5" | 35,9" | 35,9" | 31,0" | 31,0" | 27,2" | 27,2" | 24,2" | 24,2" | 21,5" | 21,7" | 19,0" | 19,6" | 16,9"  | 17,5"  | 70' 4" |
| -15 | 4 pt. outriggers down | 26,9"      | 26,9" | 38,6" | 38,6" | 42,0" | 42,0" | 35,7" | 35,7" | 30,8" | 30,8" | 27,0" | 27,0" | 24,0" | 24,0" | 21,1" | 21,4" | 18,7" | 19,0" | 16,7"  | 16,8"  | 68' 8" |
| -20 | 4 pt. outriggers down | 28,5"      | 28,5" | 38,8" | 38,8" | 40,5" | 40,5" | 34,6" | 34,6" | 30,0" | 30,0" | 26,3" | 26,3" | 23,2" | 23,2" | 20,5" | 20,5" | 18,0" | 18,0" | 15,3"  | 15,3"  | 66' 7" |
| -25 | 4 pt. outriggers down |            |       | 40,0" | 40,0" | 37,8" | 37,8" | 32,6" | 32,6" | 28,4" | 28,4" | 24,8" | 24,8" | 21,8" | 21,8" | 19,0" | 19,0" | 16,2" | 16,2" |        |        | 61' 7" |
| -30 | 4 pt. outriggers down |            |       |       |       | 29,4" | 29,4" | 25,7" | 25,7" | 22,4" | 22,4" | 19,4" | 19,4" |       |       |       |       |       |       | 19,1"  | 19,1"  | 50' 6" |

**Height** **Can be slewed through 360°** **In longitudinal position of undercarriage** **Max. reach** **\* Limited by hydr. capacity**

The lift capacities on the stick end without attachment are stated in lb x 1,000 and are valid on a firm, level supporting surface with blocked oscillating axle. These capacities can be slewed through 360° with the undercarriage in the transverse position. Capacities in the longitudinal position of the undercarriage (+/- 15°) are specified over the rigid axle with the stabilizers down. Indicated loads based on the ISO 10567 standard and do not exceed 75% of tipping or 87% of hydraulic capacity. The lift capacity values indicated are attained at the corresponding operating temperature. This operating temperature is ensured by continuous movement of the boom. Weights of fitted attachments (grabs, load hooks, etc.) and load accommodation attachment are to be deducted from the lift capacity values. The lift capacity of the unit is limited by its stability, the lifting capability of the hydraulic elements, or the maximum permissible lifting capacity of the load hook.

# LH 80 C SW – Equipment GG21

## Port – Kinematic 2A

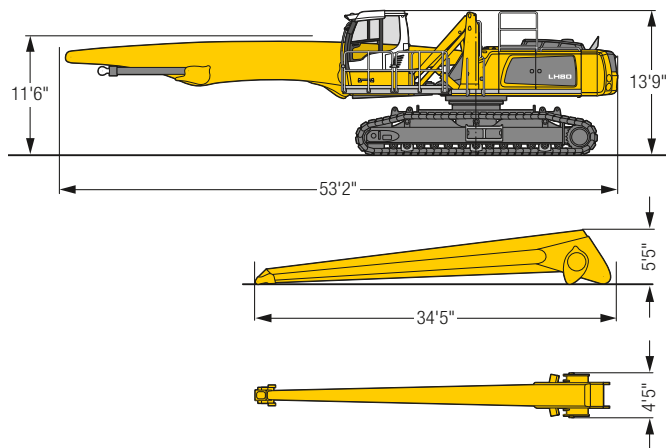


### Operating Weight and Ground Pressure

The operating weight includes the basic machine with hydr. cab elevation, straight boom 37'9", straight stick 32'10" and grab for loose material GMZ 80/7.85 yd<sup>3</sup>.

|                 |            |
|-----------------|------------|
| Weight          | 188,700 lb |
| Pad width       | 30"        |
| Ground pressure | on request |

### Dimensions



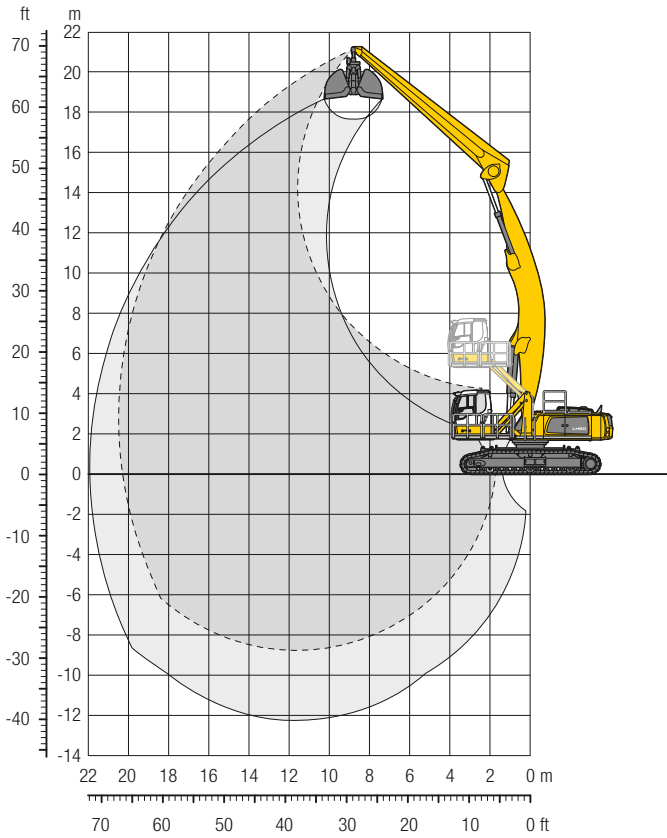
| ft  | Undercarriage | 20 ft |       | 25 ft |       | 30 ft |       | 35 ft |       | 40 ft |       | 45 ft |       | 50 ft |       | 55 ft |       | 60 ft |       | 65 ft |       | 70 ft |    | 75 ft |    | 80 ft |    | ft in |       |       |        |        |        |       |        |       |        |        |        |        |        |        |        |        |
|-----|---------------|-------|-------|-------|-------|-------|-------|-------|-------|-------|-------|-------|-------|-------|-------|-------|-------|-------|-------|-------|-------|-------|----|-------|----|-------|----|-------|-------|-------|--------|--------|--------|-------|--------|-------|--------|--------|--------|--------|--------|--------|--------|--------|
|     |               | ft    | in    | ft    | in    | ft    | in    | ft    | in    | ft    | in    | ft    | in    | ft    | in    | ft    | in    | ft    | in    | ft    | in    | ft    | in | ft    | in | ft    | in | ft    | in    |       |        |        |        |       |        |       |        |        |        |        |        |        |        |        |
| 75  | SW            | 36,0" | 36,0" |       |       |       |       |       |       |       |       |       |       |       |       |       |       |       |       |       |       |       |    |       |    |       |    |       | 35,5" | 35,5" | 20' 5" |        |        |       |        |       |        |        |        |        |        |        |        |        |
| 70  | SW            |       |       | 35,1" | 35,1" | 30,3" | 30,3" |       |       |       |       |       |       |       |       |       |       |       |       |       |       |       |    |       |    |       |    |       |       | 26,6" | 26,6"  | 32' 8" |        |       |        |       |        |        |        |        |        |        |        |        |
| 65  | SW            |       |       |       |       | 33,8" | 33,8" | 30,1" | 30,1" | 24,3" | 24,3" |       |       |       |       |       |       |       |       |       |       |       |    |       |    |       |    |       |       |       | 22,9"  | 22,9"  | 40'10" |       |        |       |        |        |        |        |        |        |        |        |
| 60  | SW            |       |       |       |       |       |       | 32,7" | 32,7" | 29,4" | 29,4" | 24,1" | 24,1" |       |       |       |       |       |       |       |       |       |    |       |    |       |    |       |       |       |        | 20,8"  | 20,8"  | 47'   |        |       |        |        |        |        |        |        |        |        |
| 55  | SW            |       |       |       |       |       |       | 32,1" | 32,1" | 29,4" | 29,4" | 27,2" | 27,2" | 22,9" | 22,9" |       |       |       |       |       |       |       |    |       |    |       |    |       |       |       |        |        | 19,4"  | 19,4" | 51'11" |       |        |        |        |        |        |        |        |        |
| 50  | SW            |       |       |       |       |       |       | 31,7" | 31,7" | 29,0" | 29,0" | 26,9" | 26,9" | 25,1" | 25,1" | 20,6" | 20,6" |       |       |       |       |       |    |       |    |       |    |       |       |       |        |        |        | 18,5" | 18,5"  | 56'   |        |        |        |        |        |        |        |        |
| 45  | SW            |       |       |       |       |       |       | 31,7" | 31,7" | 28,9" | 28,9" | 26,7" | 26,7" | 24,9" | 24,9" | 23,4" | 23,4" |       |       |       |       |       |    |       |    |       |    |       |       |       |        |        |        |       | 17,8"  | 17,8" | 59' 4" |        |        |        |        |        |        |        |
| 40  | SW            |       |       |       |       |       |       | 31,9" | 31,9" | 29,1" | 29,1" | 26,8" | 26,8" | 24,9" | 24,9" | 23,3" | 23,3" | 20,9  | 21,8" |       |       |       |    |       |    |       |    |       |       |       |        |        |        |       |        | 17,3" | 17,3"  | 62' 1" |        |        |        |        |        |        |
| 35  | SW            |       |       |       |       |       |       | 32,4" | 32,4" | 29,4" | 29,4" | 27,0" | 27,0" | 25,0" | 25,0" | 23,3" | 23,3" | 21,0  | 21,8" |       |       |       |    |       |    |       |    |       |       |       |        |        |        |       |        |       | 17,0"  | 17,0"  | 64' 5" |        |        |        |        |        |
| 30  | SW            |       |       |       |       | 36,7" | 36,7" | 33,2" | 33,2" | 30,0" | 30,0" | 27,4" | 27,4" | 25,3" | 25,3" | 23,4" | 23,4" | 20,8  | 21,8" | 17,9  | 20,0" |       |    |       |    |       |    |       |       |       |        |        |        |       |        |       |        | 16,9"  | 16,9"  | 66' 2" |        |        |        |        |
| 25  | SW            |       |       |       |       | 38,7" | 38,7" | 34,2" | 34,2" | 30,7" | 30,7" | 27,9" | 27,9" | 25,6" | 25,6" | 23,6" | 23,6" | 20,6  | 21,8" | 17,8  | 20,1" |       |    |       |    |       |    |       |       |       |        |        |        |       |        |       |        |        | 16,5   | 16,8"  | 67' 7" |        |        |        |
| 20  | SW            | 32,2" | 32,2" | 40,6" | 40,6" | 40,5" | 40,5" | 35,4" | 35,4" | 31,6" | 31,6" | 28,5" | 28,5" | 26,0" | 26,0" | 23,5  | 23,8" | 20,3  | 21,9" | 17,6  | 20,0" |       |    |       |    |       |    |       |       |       |        |        |        |       |        |       |        |        | 15,9   | 16,9"  | 68' 7" |        |        |        |
| 15  | SW            | 49,8" | 49,8" | 50,4" | 50,4" | 42,4" | 42,4" | 36,8" | 36,8" | 32,5" | 32,5" | 29,1" | 29,1" | 26,4" | 26,4" | 22,9  | 24,0" | 19,9  | 21,9" | 17,4  | 19,8" |       |    |       |    |       |    |       |       |       |        |        |        |       |        |       |        |        | 15,6   | 17,1"  | 69' 2" |        |        |        |
| 10  | SW            | 67,4" | 67,4" | 53,4" | 53,4" | 44,3" | 44,3" | 38,0" | 38,0" | 33,3" | 33,3" | 29,6" | 29,6" | 26,0  | 26,6" | 22,4  | 24,1" | 19,5  | 21,8" | 17,1  | 19,5" |       |    |       |    |       |    |       |       |       |        |        |        |       |        |       |        |        |        | 15,4   | 16,8"  | 69' 5" |        |        |
| 5   | SW            | 50,9" | 50,9" | 55,7" | 55,7" | 45,8" | 45,8" | 39,0" | 39,0" | 33,9" | 33,9" | 29,5  | 30,0" | 25,2  | 26,8" | 21,8  | 24,1" | 19,1  | 21,6" | 16,9  | 19,0" |       |    |       |    |       |    |       |       |       |        |        |        |       |        |       |        |        |        | 15,3   | 15,9"  | 69' 4" |        |        |
| 0   | SW            | 28,2" | 28,2" | 56,8" | 56,8" | 46,6" | 46,6" | 39,5" | 39,5" | 33,8  | 34,2" | 28,6  | 30,1" | 24,5  | 26,7" | 21,4  | 23,7" | 18,8  | 21,0" | 16,7  | 18,1" |       |    |       |    |       |    |       |       |       |        |        |        |       |        |       |        |        |        |        | 14,8"  | 14,8"  | 68'10" |        |
| -5  | SW            | 24,9" | 24,9" | 52,4" | 52,4" | 46,4" | 46,4" | 39,3" | 39,3" | 32,7  | 33,9" | 27,8  | 29,7" | 24,0  | 26,1" | 20,9  | 23,0" | 18,5  | 20,0" | 16,5  | 16,5" |       |    |       |    |       |    |       |       |       |        |        |        |       |        |       |        |        |        |        |        | 13,5"  | 13,5"  | 67'11" |
| -10 | SW            | 25,8" | 25,8" | 45,5" | 45,5" | 44,8" | 44,8" | 38,1" | 38,1" | 31,9  | 32,9" | 27,2  | 28,7" | 23,5  | 25,0" | 20,6  | 21,7" | 18,3  | 18,4" | 14,1" | 14,1" |       |    |       |    |       |    |       |       |       |        |        |        |       |        |       |        |        |        |        |        | 14,0"  | 14,0"  | 65' 1" |
| -15 | SW            | 28,2" | 28,2" | 44,6" | 44,6" | 41,6" | 41,6" | 35,7" | 35,7" | 30,9" | 30,9" | 26,8  | 26,8" | 23,1" | 23,1" | 19,6" | 19,6" | 15,7" | 15,7" |       |       |       |    |       |    |       |    |       |       |       |        |        |        |       |        |       |        |        |        |        |        | 15,2"  | 15,2"  | 60' 7" |
| -20 | SW            |       |       | 41,9" | 41,9" | 36,6" | 36,6" | 31,8" | 31,8" | 27,6" | 27,6" | 23,7" | 23,7" | 20,1" | 20,1" |       |       |       |       |       |       |       |    |       |    |       |    |       |       |       |        |        |        |       |        |       |        |        |        |        |        | 17,5"  | 17,5"  | 53' 5" |

Height Can be slewed through 360° In longitudinal position of undercarriage Max. reach \* Limited by hydr. capacity

The lift capacities on the stick end without attachment are stated in lb x 1,000 and can be slewed through 360° on a firm, level supporting surface. Capacities are valid for 30" wide flat pads. Indicated loads based on the ISO 10567 standard and do not exceed 75% of tipping or 87% of hydraulic capacity. The lift capacity values indicated are attained at the corresponding operating temperature. This operating temperature is ensured by continuous movement of the boom. Weights of fitted attachments (grabs, load hooks, etc.) and load accommodation attachment are to be deducted from the lift capacity values. The lift capacity of the unit is limited by its stability, the lifting capability of the hydraulic elements, or the maximum permissible lifting capacity of the load hook.

# LH 80 C SW – Equipment AG21

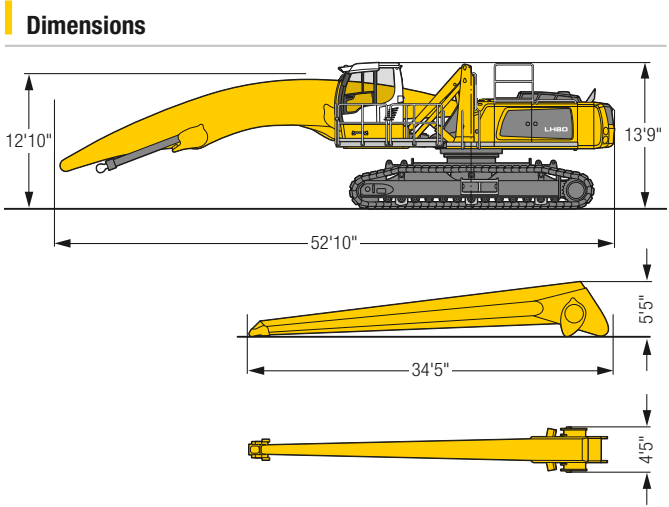
## Port – Kinematic 2D



### Operating Weight and Ground Pressure

The operating weight includes the basic machine with hydr. cab elevation, angled boom 37°9", straight stick 32'10" and grab for loose material GMZ 80/7.85 yd<sup>3</sup>.

|                 |            |
|-----------------|------------|
| Weight          | 190,200 lb |
| Pad width       | 30"        |
| Ground pressure | on request |



|            |               | 20 ft | 25 ft | 30 ft | 35 ft | 40 ft | 45 ft | 50 ft | 55 ft | 60 ft | 65 ft | 70 ft | 75 ft | 80 ft |       | ft in       |
|------------|---------------|-------|-------|-------|-------|-------|-------|-------|-------|-------|-------|-------|-------|-------|-------|-------------|
| <b>70</b>  | Undercarriage |       |       |       |       |       |       |       |       |       |       |       |       |       |       |             |
| <b>70</b>  | SW            |       |       |       |       |       |       |       |       |       |       |       |       |       |       | 21,6' 21,6' |
| <b>65</b>  | SW            |       |       |       | 23,8' | 23,8' |       |       |       |       |       |       |       |       |       | 21,6' 21,6' |
| <b>60</b>  | SW            |       |       |       |       | 24,0' | 24,0' |       |       |       |       |       |       |       |       | 19,7' 19,7' |
| <b>55</b>  | SW            |       |       |       |       | 24,7' | 24,7' | 23,3' | 23,3' |       |       |       |       |       |       | 18,6' 18,6' |
| <b>50</b>  | SW            |       |       |       |       | 24,3' | 24,3' | 22,9' | 22,9' | 21,8' | 21,8' |       |       |       |       | 17,8' 17,8' |
| <b>45</b>  | SW            |       |       |       |       | 24,2' | 24,2' | 22,7' | 22,7' | 21,6' | 21,6' | 20,1' | 20,1' |       |       | 17,3' 17,3' |
| <b>40</b>  | SW            |       |       |       |       | 24,3' | 24,3' | 22,8' | 22,8' | 21,6' | 21,6' | 20,6' | 20,6' |       |       | 17,0' 17,0' |
| <b>35</b>  | SW            |       |       |       |       | 24,7' | 24,7' | 23,1' | 23,1' | 21,7' | 21,7' | 20,6' | 20,6' | 19,7' |       | 16,9' 16,9' |
| <b>30</b>  | SW            |       |       |       |       | 27,7' | 27,7' | 25,4' | 25,4' | 23,6' | 23,6' | 22,1' | 22,1' | 20,8' | 19,8' | 16,9' 19,8' |
| <b>25</b>  | SW            |       |       | 32,1' | 32,1' | 28,9' | 28,9' | 26,3' | 26,3' | 24,2' | 24,2' | 22,5' | 22,5' | 21,1' | 21,1' | 17,0' 17,0' |
| <b>20</b>  | SW            |       | 39,4' | 39,4' | 34,2' | 34,2' | 30,3' | 30,3' | 27,4' | 27,4' | 25,0' | 25,0' | 23,1' | 23,1' | 21,6' | 17,2' 17,2' |
| <b>15</b>  | SW            | 52,8' | 52,8' | 43,0' | 43,0' | 36,6' | 36,6' | 32,0' | 32,0' | 28,5' | 28,5' | 25,9' | 25,9' | 23,7' | 23,7' | 16,6' 17,6' |
| <b>10</b>  | SW            | 59,0' | 59,0' | 46,8' | 46,8' | 39,1' | 39,1' | 33,7' | 33,7' | 29,8' | 29,8' | 26,8' | 26,8' | 24,4' | 24,4' | 16,3' 18,0' |
| <b>5</b>   | SW            | 64,4' | 64,4' | 50,3' | 50,3' | 41,4' | 41,4' | 35,4' | 35,4' | 31,0' | 31,0' | 27,6' | 27,6' | 25,0' | 25,0' | 16,1' 18,6' |
| <b>0</b>   | SW            | 41,1' | 41,1' | 53,0' | 53,0' | 43,4' | 43,4' | 36,8' | 36,8' | 32,0' | 32,0' | 28,4' | 28,4' | 24,9' | 25,5' | 16,1' 18,5' |
| <b>-5</b>  | SW            | 33,7' | 33,7' | 54,7' | 54,7' | 44,7' | 44,7' | 37,8' | 37,8' | 32,7' | 32,7' | 28,1' | 28,9' | 24,2' | 25,8' | 16,3' 18,4' |
| <b>-10</b> | SW            | 32,3' | 32,3' | 53,2' | 53,2' | 45,2' | 45,2' | 38,2' | 38,2' | 32,2' | 33,1' | 27,4' | 29,1' | 23,7' | 25,8' | 16,6' 18,1' |
| <b>-15</b> | SW            | 33,1' | 33,1' | 49,8' | 49,8' | 44,7' | 44,7' | 37,8' | 37,9' | 31,5' | 32,8' | 26,8' | 28,7' | 23,3' | 25,4' | 17,2' 17,7' |
| <b>-20</b> | SW            | 34,8' | 34,8' | 49,6' | 49,6' | 43,0' | 43,0' | 36,7' | 36,7' | 31,1' | 31,7' | 26,5' | 27,7' | 23,0' | 24,3' | 17,1' 17,1' |
| <b>-25</b> | SW            |       | 46,6' | 46,6' | 39,7' | 39,7' | 34,2' | 34,2' | 29,6' | 29,6' | 25,7' | 25,7' | 22,1' | 22,1' |       | 19,5' 19,5' |

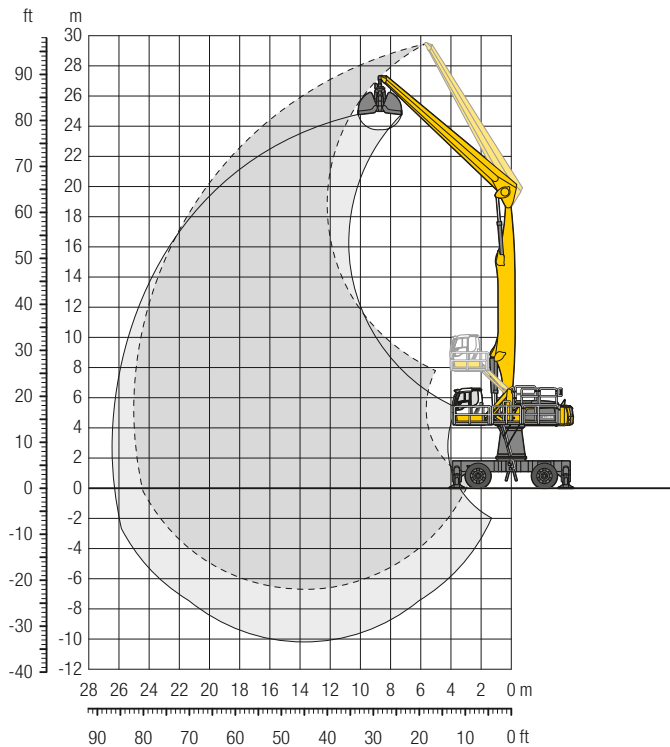
Height Can be slewed through 360° In longitudinal position of undercarriage Max. reach \* Limited by hydr. capacity

The lift capacities on the stick end without attachment are stated in lb x 1,000 and can be slewed through 360° on a firm, level supporting surface. Capacities are valid for 30" wide flat pads. Indicated loads based on the ISO 10567 standard and do not exceed 75% of tipping or 87% of hydraulic capacity. The lift capacity values indicated are attained at the corresponding operating temperature. This operating temperature is ensured by continuous movement of the boom. Weights of fitted attachments (grabs, load hooks, etc.) and load accommodation attachment are to be deducted from the lift capacity values. The lift capacity of the unit is limited by its stability, the lifting capability of the hydraulic elements, or the maximum permissible lifting capacity of the load hook.



# LH 80 M HR – Equipment GG25

## Port – Kinematic 2A

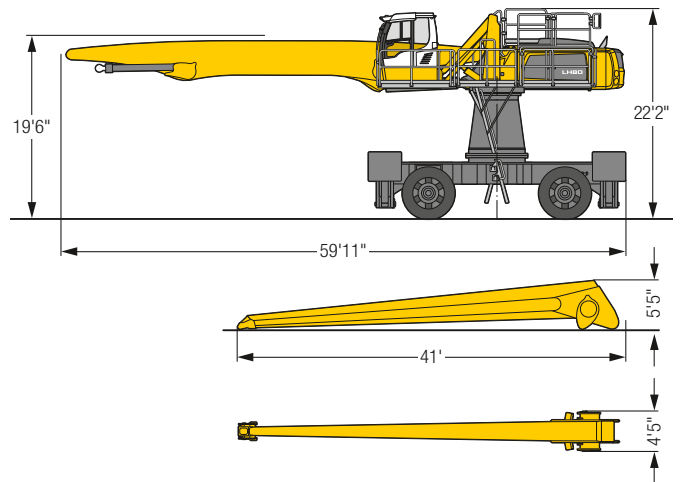


### Operating Weight

The operating weight includes the basic machine with 4 point outriggers, turret 6'7", hydr. cab elevation, 4 solid tires, straight boom 44'3", straight stick 39'4" and grab for loose material GMZ 80/5.23 yd<sup>3</sup>.

Weight 207,100 lb

### Dimensions



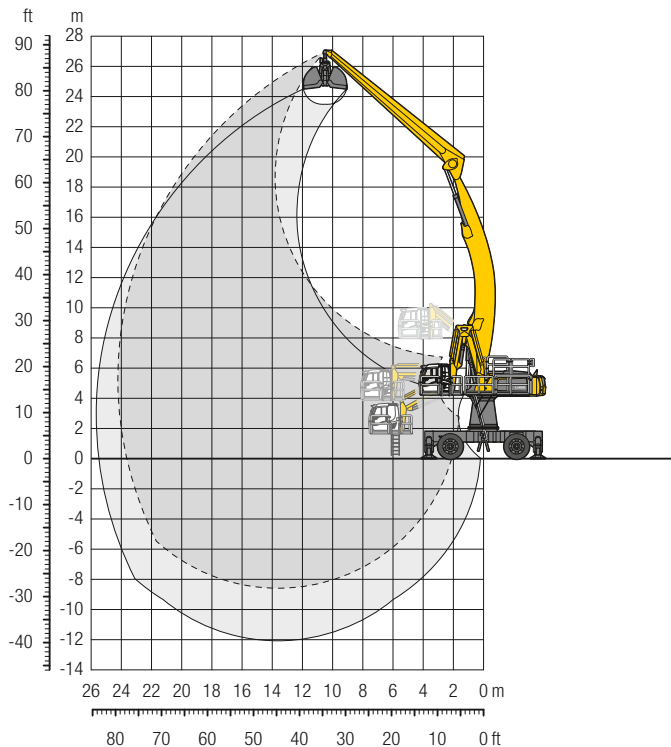
|            |                       | 20 ft | 25 ft | 30 ft | 35 ft | 40 ft | 45 ft | 50 ft | 55 ft | 60 ft | 65 ft | 70 ft | 75 ft | 80 ft |       | ft in                     |                           |
|------------|-----------------------|-------|-------|-------|-------|-------|-------|-------|-------|-------|-------|-------|-------|-------|-------|---------------------------|---------------------------|
| <b>95</b>  | 4 pt. outriggers down |       | 28,2" | 28,2" |       |       |       |       |       |       |       |       |       |       |       | 28,1" 28,1" <b>25' 1"</b> |                           |
| <b>90</b>  | 4 pt. outriggers down |       |       | 28,0" | 28,0" | 24,3" | 24,3" |       |       |       |       |       |       |       |       | 21,9" 21,9" <b>37' 5"</b> |                           |
| <b>85</b>  | 4 pt. outriggers down |       |       |       | 27,2" | 27,2" | 24,3" | 24,3" | 20,2" | 20,2" |       |       |       |       |       | 19,0" 19,0" <b>46'</b>    |                           |
| <b>80</b>  | 4 pt. outriggers down |       |       |       |       | 26,4" | 26,4" | 23,9" | 23,9" | 20,3" | 20,3" |       |       |       |       | 17,3" 17,3" <b>52' 8"</b> |                           |
| <b>75</b>  | 4 pt. outriggers down |       |       |       |       | 27,1" | 27,1" | 24,6" | 24,6" | 22,5" | 22,5" | 19,8" | 19,8" |       |       | 16,1" 16,1" <b>58' 2"</b> |                           |
| <b>70</b>  | 4 pt. outriggers down |       |       |       |       | 26,7" | 26,7" | 24,3" | 24,3" | 22,3" | 22,3" | 20,6" | 20,6" | 18,7" | 18,7" | 15,3" 15,3" <b>62'10"</b> |                           |
| <b>65</b>  | 4 pt. outriggers down |       |       |       |       | 26,6" | 26,6" | 24,1" | 24,1" | 22,1" | 22,1" | 20,4" | 20,4" | 19,0" | 19,0" | 14,7" 14,7" <b>66' 8"</b> |                           |
| <b>60</b>  | 4 pt. outriggers down |       |       |       |       |       |       | 24,1" | 24,1" | 22,1" | 22,1" | 20,4" | 20,4" | 18,9" | 18,9" | 14,2" 14,2" <b>70'</b>    |                           |
| <b>55</b>  | 4 pt. outriggers down |       |       |       |       | 26,6" | 26,6" | 24,1" | 24,1" | 22,1" | 22,1" | 20,4" | 20,4" | 18,9" | 18,9" | 13,9" 13,9" <b>72'11"</b> |                           |
| <b>50</b>  | 4 pt. outriggers down |       |       |       |       | 26,8" | 26,8" | 24,3" | 24,3" | 22,2" | 22,2" | 20,4" | 20,4" | 18,9" | 18,9" | 13,6" 13,6" <b>75' 4"</b> |                           |
| <b>45</b>  | 4 pt. outriggers down |       |       |       |       | 27,1" | 27,1" | 24,5" | 24,5" | 22,4" | 22,4" | 20,5" | 20,5" | 19,0" | 19,0" | 13,5" 13,5" <b>77' 4"</b> |                           |
| <b>40</b>  | 4 pt. outriggers down |       |       |       | 30,1" | 30,1" | 27,6" | 27,6" | 24,8" | 24,8" | 22,6" | 22,6" | 20,7" | 20,7" | 19,1" | 19,1"                     | 13,4" 13,4" <b>78'11"</b> |
| <b>35</b>  | 4 pt. outriggers down |       |       | 29,0" | 29,0" | 31,7" | 31,7" | 28,1" | 28,1" | 25,2" | 25,2" | 22,9" | 22,9" | 20,9" | 20,9" | 13,4" 13,4" <b>80' 1"</b> |                           |
| <b>30</b>  | 4 pt. outriggers down |       | 27,7" | 27,7" | 33,1" | 33,1" | 32,6" | 32,6" | 28,7" | 28,7" | 25,6" | 25,6" | 23,2" | 23,2" | 21,1" | 21,1"                     | 13,4" 13,4" <b>81' 1"</b> |
| <b>25</b>  | 4 pt. outriggers down | 28,8" | 28,8" | 37,3" | 37,3" | 39,0" | 39,0" | 33,5" | 33,5" | 29,3" | 29,3" | 26,1" | 26,1" | 23,4" | 23,4" | 12,4" 12,4" <b>81' 8"</b> |                           |
| <b>20</b>  | 4 pt. outriggers down | 61,7" | 61,7" | 48,8" | 48,8" | 40,3" | 40,3" | 34,4" | 34,4" | 29,9" | 29,9" | 26,5" | 26,5" | 23,7" | 23,7" | 11,9" 11,9" <b>82'</b>    |                           |
| <b>15</b>  | 4 pt. outriggers down | 39,7" | 39,7" | 50,4" | 50,4" | 41,4" | 41,4" | 35,1" | 35,1" | 30,4" | 30,4" | 26,8" | 26,8" | 23,9" | 23,9" | 11,3" 11,3" <b>82'</b>    |                           |
| <b>10</b>  | 4 pt. outriggers down | 17,3" | 17,3" | 50,3" | 50,3" | 42,0" | 42,0" | 35,5" | 35,5" | 30,7" | 30,7" | 26,9" | 26,9" | 23,9" | 23,9" | 10,5" 10,5" <b>81' 8"</b> |                           |
| <b>5</b>   | 4 pt. outriggers down | 14,3" | 14,3" | 30,9" | 30,9" | 42,0" | 42,0" | 35,5" | 35,5" | 30,6" | 30,6" | 26,8" | 26,8" | 23,8" | 23,8" | 9,7" 9,7" <b>81' 1"</b>   |                           |
| <b>0</b>   | 4 pt. outriggers down | 14,7" | 14,7" | 26,3" | 26,3" | 41,1" | 41,1" | 34,9" | 34,9" | 30,1" | 30,1" | 26,4" | 26,4" | 23,3" | 23,3" | 8,8" 8,8" <b>80' 2"</b>   |                           |
| <b>- 5</b> | 4 pt. outriggers down | 16,2" | 16,2" | 25,6" | 25,6" | 39,2" | 39,2" | 33,6" | 33,6" | 29,1" | 29,1" | 25,5" | 25,5" | 22,5" | 22,5" | 9,0" 9,0" <b>77' 5"</b>   |                           |
| <b>-10</b> | 4 pt. outriggers down | 18,3" | 18,3" | 26,5" | 26,5" | 36,2" | 36,2" | 31,4" | 31,4" | 27,4" | 27,4" | 24,1" | 24,1" | 21,2" | 21,2" | 9,6" 9,6" <b>73' 4"</b>   |                           |
| <b>-15</b> | 4 pt. outriggers down |       | 28,2" | 31,9" | 31,9" | 28,2" | 28,2" | 24,8" | 24,8" | 21,9" | 21,9" | 19,2" | 19,2" | 16,8" | 16,8" | 10,7" 10,7" <b>67' 5"</b> |                           |
| <b>-20</b> | 4 pt. outriggers down |       |       |       |       | 23,8" | 23,8" | 21,3" | 21,3" | 18,8" | 18,8" | 16,4" | 16,4" | 14,1" | 14,1" | 13,1" 13,1" <b>57' 2"</b> |                           |

**Height** **Can be slewed through 360°** **In longitudinal position of undercarriage** **Max. reach** \* **Limited by hydr. capacity**

The lift capacities on the stick end without attachment are stated in lb x 1,000 and are valid on a firm, level supporting surface with blocked oscillating axle. These capacities can be slewed through 360° with the undercarriage in the transverse position. Capacities in the longitudinal position of the undercarriage (+/- 15°) are specified over the rigid axle with the stabilizers down. Indicated loads based on the ISO 10567 standard and do not exceed 75% of tipping or 87% of hydraulic capacity. The lift capacity values indicated are attained at the corresponding operating temperature. This operating temperature is ensured by continuous movement of the boom. Weights of fitted attachments (grabs, load hooks, etc.) and load accommodation attachment are to be deducted from the lift capacity values. The lift capacity of the unit is limited by its stability, the lifting capability of the hydraulic elements, or the maximum permissible lifting capacity of the load hook.

# LH 80 M HR – Equipment AG24

## Port – Kinematic 2D

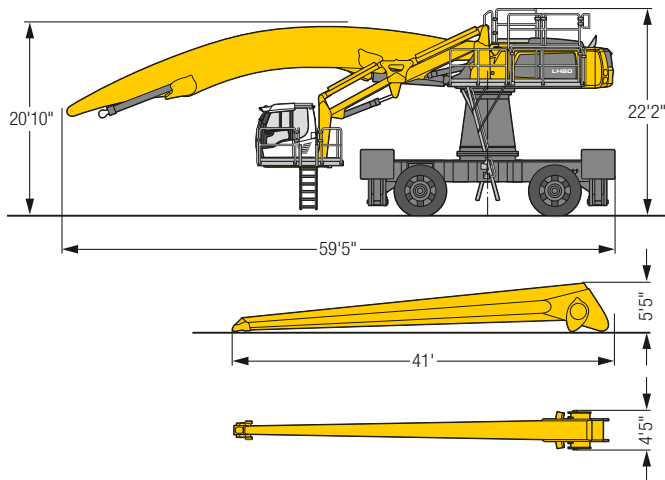


### Operating Weight

The operating weight includes the basic machine with 4 point outriggers, turret 6'7", hydr. cab elevation, 4 solid tires, angled boom 44'3", straight stick 39'4" and grab for loose material GMZ 80/5.23 yd<sup>3</sup>.

Weight 214,400 lb

### Dimensions



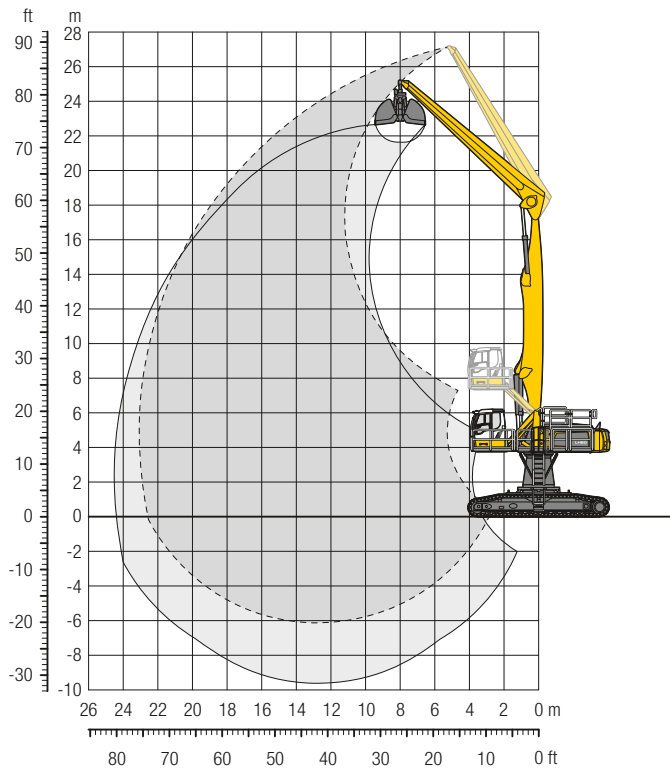
| ft  | Undercarriage         | 20 ft       | 25 ft       | 30 ft       | 35 ft       | 40 ft       | 45 ft       | 50 ft       | 55 ft       | 60 ft       | 65 ft       | 70 ft       | 75 ft       | 80 ft | ft in               |
|-----|-----------------------|-------------|-------------|-------------|-------------|-------------|-------------|-------------|-------------|-------------|-------------|-------------|-------------|-------|---------------------|
| 90  | 4 pt. outriggers down |             |             |             |             |             |             |             |             |             |             |             |             |       | 17,9" 17,9" 41' 1"  |
| 85  | 4 pt. outriggers down |             |             |             |             | 18,8" 18,8" |             |             |             |             |             |             |             |       | 16,3" 16,3" 48' 6"  |
| 80  | 4 pt. outriggers down |             |             |             |             |             | 19,1" 19,1" |             |             |             |             |             |             |       | 15,3" 15,3" 54' 5"  |
| 75  | 4 pt. outriggers down |             |             |             |             |             | 20,4" 20,4" | 19,0" 19,0" |             |             |             |             |             |       | 14,6" 14,6" 59' 4"  |
| 70  | 4 pt. outriggers down |             |             |             |             |             | 20,1" 20,1" | 18,7" 18,7" | 17,5" 17,5" |             |             |             |             |       | 14,1" 14,1" 63' 5"  |
| 65  | 4 pt. outriggers down |             |             |             |             |             |             | 18,5" 18,5" | 17,3" 17,3" | 16,3" 16,3" |             |             |             |       | 13,8" 13,8" 66' 11" |
| 60  | 4 pt. outriggers down |             |             |             |             |             |             | 18,4" 18,4" | 17,2" 17,2" | 16,2" 16,2" | 15,4" 15,4" |             |             |       | 13,6" 13,6" 69' 11" |
| 55  | 4 pt. outriggers down |             |             |             |             |             | 19,9" 19,9" | 18,4" 18,4" | 17,2" 17,2" | 16,2" 16,2" | 15,3" 15,3" |             |             |       | 13,4" 13,4" 72' 5"  |
| 50  | 4 pt. outriggers down |             |             |             |             |             | 20,1" 20,1" | 18,6" 18,6" | 17,3" 17,3" | 16,2" 16,2" | 15,3" 15,3" | 14,5" 14,5" |             |       | 13,4" 13,4" 74' 6"  |
| 45  | 4 pt. outriggers down |             |             |             |             |             | 20,4" 20,4" | 18,8" 18,8" | 17,4" 17,4" | 16,3" 16,3" | 15,4" 15,4" | 14,5" 14,5" |             |       | 13,4" 13,4" 76' 1"  |
| 40  | 4 pt. outriggers down |             |             |             |             | 22,8" 22,8" | 20,8" 20,8" | 19,1" 19,1" | 17,7" 17,7" | 16,5" 16,5" | 15,5" 15,5" | 14,6" 14,6" | 13,8" 13,8" |       | 13,5" 13,5" 77' 6"  |
| 35  | 4 pt. outriggers down |             |             |             |             | 23,5" 23,5" | 21,3" 21,3" | 19,5" 19,5" | 18,0" 18,0" | 16,7" 16,7" | 15,6" 15,6" | 14,7" 14,7" | 13,9" 13,9" |       | 13,3" 13,3" 78' 5"  |
| 30  | 4 pt. outriggers down |             |             | 31,2" 31,2" | 27,3" 27,3" | 24,3" 24,3" | 21,9" 21,9" | 19,9" 19,9" | 18,3" 18,3" | 17,0" 17,0" | 15,8" 15,8" | 14,8" 14,8" | 13,9" 13,9" |       | 13,3" 13,3" 79' 1"  |
| 25  | 4 pt. outriggers down |             | 39,1" 39,1" | 32,9" 32,9" | 28,5" 28,5" | 25,1" 25,1" | 22,5" 22,5" | 20,4" 20,4" | 18,7" 18,7" | 17,2" 17,2" | 16,0" 16,0" | 15,0" 15,0" | 14,0" 14,0" |       | 12,9" 12,9" 78' 6"  |
| 20  | 4 pt. outriggers down | 52,7" 52,7" | 41,8" 41,8" | 34,7" 34,7" | 29,7" 29,7" | 26,0" 26,0" | 23,1" 23,1" | 20,9" 20,9" | 19,0" 19,0" | 17,5" 17,5" | 16,2" 16,2" | 15,1" 15,1" | 14,1" 14,1" |       | 12,8" 12,8" 77' 6"  |
| 15  | 4 pt. outriggers down | 56,8" 56,8" | 44,3" 44,3" | 36,4" 36,4" | 30,9" 30,9" | 26,9" 26,9" | 23,8" 23,8" | 21,4" 21,4" | 19,4" 19,4" | 17,8" 17,8" | 16,4" 16,4" | 15,2" 15,2" | 14,1" 14,1" |       | 12,6" 12,6" 76' 2"  |
| 10  | 4 pt. outriggers down | 29,7" 29,7" | 46,4" 46,4" | 37,8" 37,8" | 31,9" 31,9" | 27,7" 27,7" | 24,4" 24,4" | 21,8" 21,8" | 19,8" 19,8" | 18,0" 18,0" | 16,6" 16,6" | 15,3" 15,3" | 14,1" 14,1" |       | 12,3" 12,3" 74' 6"  |
| 5   | 4 pt. outriggers down | 22,7" 22,7" | 42,1" 42,1" | 39,0" 39,0" | 32,8" 32,8" | 28,3" 28,3" | 24,9" 24,9" | 22,2" 22,2" | 20,0" 20,0" | 18,2" 18,2" | 16,7" 16,7" | 15,3" 15,3" | 13,9" 13,9" |       | 12,0" 12,0" 68' 7"  |
| 0   | 4 pt. outriggers down | 21,2" 21,2" | 34,1" 34,1" | 39,6" 39,6" | 33,4" 33,4" | 28,8" 28,8" | 25,2" 25,2" | 22,4" 22,4" | 20,2" 20,2" | 18,3" 18,3" | 16,6" 16,6" | 15,1" 15,1" | 13,6" 13,6" |       | 12,0" 12,0" 68' 7"  |
| -5  | 4 pt. outriggers down | 21,5" 21,5" | 31,5" 31,5" | 39,7" 39,7" | 33,5" 33,5" | 28,9" 28,9" | 25,3" 25,3" | 22,5" 22,5" | 20,2" 20,2" | 18,2" 18,2" | 16,4" 16,4" | 14,8" 14,8" | 13,1" 13,1" |       | 12,0" 12,0" 68' 7"  |
| -10 | 4 pt. outriggers down | 22,5" 22,5" | 31,0" 31,0" | 39,0" 39,0" | 33,1" 33,1" | 28,7" 28,7" | 25,1" 25,1" | 22,3" 22,3" | 19,9" 19,9" | 17,8" 17,8" | 16,0" 16,0" | 14,2" 14,2" |             |       | 11,9" 11,9" 72' 5"  |
| -15 | 4 pt. outriggers down | 23,9" 23,9" | 31,5" 31,5" | 37,5" 37,5" | 32,1" 32,1" | 27,9" 27,9" | 24,5" 24,5" | 21,7" 21,7" | 19,3" 19,3" | 17,2" 17,2" | 15,2" 15,2" | 13,1" 13,1" |             |       | 12,0" 12,0" 68' 7"  |
| -20 | 4 pt. outriggers down |             | 32,6" 32,6" | 35,0" 35,0" | 30,3" 30,3" | 26,5" 26,5" | 23,3" 23,3" | 20,6" 20,6" | 18,2" 18,2" | 16,0" 16,0" | 13,8" 13,8" |             |             |       | 14,1" 14,1" 59' 11" |
| -25 | 4 pt. outriggers down |             |             | 31,5" 31,5" | 27,6" 27,6" | 24,3" 24,3" | 21,4" 21,4" | 18,8" 18,8" | 16,4" 16,4" |             |             |             |             |       |                     |

**Height**
**Can be slewed through 360°**
**In longitudinal position of undercarriage**
**Max. reach**
**\* Limited by hydr. capacity**

The lift capacities on the stick end without attachment are stated in lb x 1,000 and are valid on a firm, level supporting surface with blocked oscillating axle. These capacities can be slewed through 360° with the undercarriage in the transverse position. Capacities in the longitudinal position of the undercarriage (+/- 15°) are specified over the rigid axle with the stabilizers down. Indicated loads based on the ISO 10567 standard and do not exceed 75% of tipping or 87% of hydraulic capacity. The lift capacity values indicated are attained at the corresponding operating temperature. This operating temperature is ensured by continuous movement of the boom. Weights of fitted attachments (grabs, load hooks, etc.) and load accommodation attachment are to be deducted from the lift capacity values. The lift capacity of the unit is limited by its stability, the lifting capability of the hydraulic elements, or the maximum permissible lifting capacity of the load hook.

# LH 80 C HR – Equipment GG23

## Port – Kinematic 2A

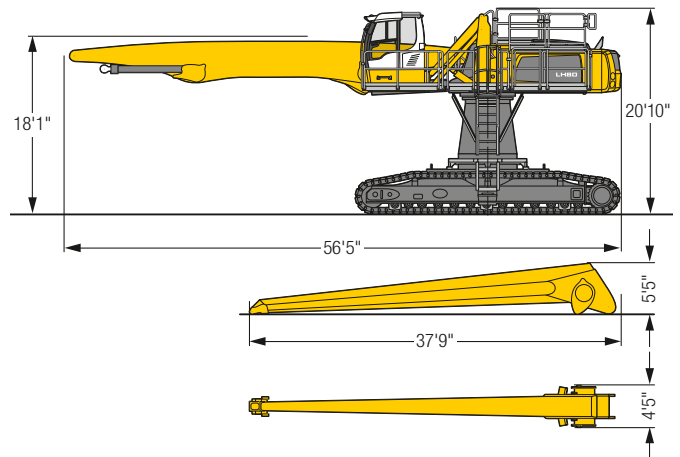


### Operating Weight and Ground Pressure

The operating weight includes the basic machine with turret 6'7", hydr. cab elevation, straight boom 41', straight stick 36'1" and grab for loose material GMZ 80/7.85 yd<sup>3</sup>.

|                 |            |
|-----------------|------------|
| Weight          | 208,200 lb |
| Pad width       | 30"        |
| Ground pressure | on request |

### Dimensions



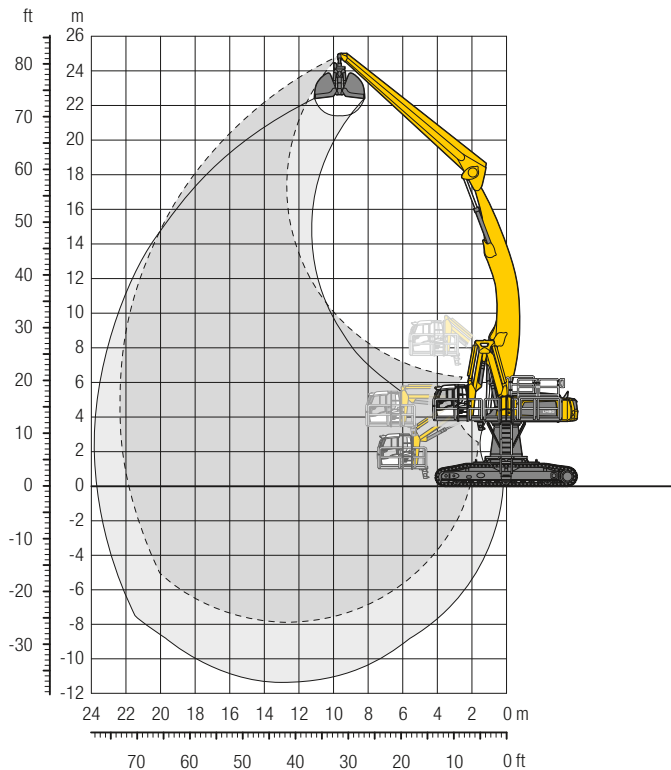
| ft  | Undercarriage | Reach (ft) |       |       |       |       |       |       |       |       |       |       |       |       |       | ft in |       |       |       |        |       |        |        |       |        |       |        |        |       |        |       |       |        |        |
|-----|---------------|------------|-------|-------|-------|-------|-------|-------|-------|-------|-------|-------|-------|-------|-------|-------|-------|-------|-------|--------|-------|--------|--------|-------|--------|-------|--------|--------|-------|--------|-------|-------|--------|--------|
|     |               | 20 ft      | 25 ft | 30 ft | 35 ft | 40 ft | 45 ft | 50 ft | 55 ft | 60 ft | 65 ft | 70 ft | 75 ft | 80 ft |       |       |       |       |       |        |       |        |        |       |        |       |        |        |       |        |       |       |        |        |
| 85  | SW            |            |       | 31,7* | 31,7* |       |       |       |       |       |       |       |       |       |       |       |       | 26,7* | 26,7* | 29'11" |       |        |        |       |        |       |        |        |       |        |       |       |        |        |
| 80  | SW            |            |       |       | 30,8* | 30,8* | 27,2* | 27,2* |       |       |       |       |       |       |       |       |       | 22,2* | 22,2* | 39' 8" |       |        |        |       |        |       |        |        |       |        |       |       |        |        |
| 75  | SW            |            |       |       |       | 29,8* | 29,8* | 26,8* | 26,8* | 22,3* | 22,3* |       |       |       |       |       |       | 19,7* | 19,7* | 46'11" |       |        |        |       |        |       |        |        |       |        |       |       |        |        |
| 70  | SW            |            |       |       |       | 30,9* | 30,9* | 28,3* | 28,3* | 25,9* | 25,9* | 21,9* | 21,9* |       |       |       |       | 18,2* | 18,2* | 52' 8" |       |        |        |       |        |       |        |        |       |        |       |       |        |        |
| 65  | SW            |            |       |       |       |       | 27,8* | 27,8* | 25,5* | 25,5* | 23,6* | 23,6* | 20,8* | 20,8* |       |       |       | 17,1* | 17,1* | 57' 6" |       |        |        |       |        |       |        |        |       |        |       |       |        |        |
| 60  | SW            |            |       |       |       |       | 27,6* | 27,6* | 25,3* | 25,3* | 23,4* | 23,4* | 21,8* | 21,8* | 18,8* | 18,8* |       | 16,4* | 16,4* | 61' 5" |       |        |        |       |        |       |        |        |       |        |       |       |        |        |
| 55  | SW            |            |       |       |       |       | 27,5* | 27,5* | 25,2* | 25,2* | 23,3* | 23,3* | 21,7* | 21,7* | 20,3* | 20,3* |       | 15,8* | 15,8* | 64'10" |       |        |        |       |        |       |        |        |       |        |       |       |        |        |
| 50  | SW            |            |       |       |       |       | 27,6* | 27,6* | 25,3* | 25,3* | 23,3* | 23,3* | 21,7* | 21,7* | 20,2* | 20,2* | 18,9* | 18,9* |       | 15,5*  | 15,5* | 67' 7" |        |       |        |       |        |        |       |        |       |       |        |        |
| 45  | SW            |            |       |       |       | 30,9* | 30,9* | 27,9* | 27,9* | 25,5* | 25,5* | 23,4* | 23,4* | 21,7* | 21,7* | 20,2* | 20,2* | 18,9* | 18,9* |        | 15,2* | 15,2*  | 69'11" |       |        |       |        |        |       |        |       |       |        |        |
| 40  | SW            |            |       |       |       |       | 31,5* | 31,5* | 28,4* | 28,4* | 25,8* | 25,8* | 23,7* | 23,7* | 21,9* | 21,9* | 20,3* | 20,3* | 18,9* | 18,9*  | 17,4* | 17,4*  | 15,0*  | 15,0* | 71'10" |       |        |        |       |        |       |       |        |        |
| 35  | SW            |            |       |       |       |       | 32,6* | 32,6* | 32,3* | 32,3* | 29,0* | 29,0* | 26,2* | 26,2* | 24,0* | 24,0* | 22,0* | 22,0* | 20,4* | 20,4*  | 18,9* | 18,9*  | 17,4*  | 17,4* | 15,0*  | 15,0* | 73' 4" |        |       |        |       |       |        |        |
| 30  | SW            |            |       | 30,8* | 30,8* | 36,0* | 36,0* | 33,3* | 33,3* | 29,7* | 29,7* | 26,7* | 26,7* | 24,3* | 24,3* | 22,3* | 22,3* | 20,5* | 20,5* | 18,9*  | 18,9* | 17,4*  | 17,4*  |       |        | 15,0* | 15,0*  | 74' 5" |       |        |       |       |        |        |
| 25  | SW            | 29,8*      | 29,8* | 38,3* | 38,3* | 39,8* | 39,8* | 34,5* | 34,5* | 30,4* | 30,4* | 27,2* | 27,2* | 24,7* | 24,7* | 22,5* | 22,5* | 20,6* | 20,6* | 18,9*  | 18,9* | 17,3*  | 17,3*  | 15,2* | 15,2*  |       |        | 15,1*  | 15,1* | 75' 2" |       |       |        |        |
| 20  | SW            | 60,2*      | 60,2* | 49,7* | 49,7* | 41,5* | 41,5* | 35,6* | 35,6* | 31,2* | 31,2* | 27,8* | 27,8* | 25,0* | 25,0* | 22,7* | 22,7* | 20,7* | 20,7* | 18,9*  | 18,9* | 17,1*  | 17,1*  | 14,9* | 14,9*  |       |        | 14,5*  | 14,5* | 75' 7" |       |       |        |        |
| 15  | SW            | 66,3*      | 66,3* | 52,1* | 52,1* | 43,0* | 43,0* | 36,6* | 36,6* | 31,9* | 31,9* | 28,2* | 28,2* | 25,3* | 25,3* | 22,8* | 22,8* | 20,7* | 20,7* | 18,7*  | 18,7* | 16,8*  | 16,8*  | 14,3* | 14,3*  |       |        | 13,8*  | 13,8* | 75' 8" |       |       |        |        |
| 10  | SW            | 27,1*      | 27,1* | 53,7* | 53,7* | 44,0* | 44,0* | 37,3* | 37,3* | 32,3* | 32,3* | 28,5* | 28,5* | 25,4* | 25,4* | 22,8* | 22,8* | 20,5* | 20,5* | 18,4*  | 18,4* | 16,3*  | 16,3*  | 13,4* | 13,4*  |       |        | 13,0*  | 13,0* | 75' 6" |       |       |        |        |
| 5   | SW            | 19,5*      | 19,5* | 46,2* | 46,2* | 44,4* | 44,4* | 37,6* | 37,6* | 32,4* | 32,4* | 28,5* | 28,5* | 25,3* | 25,3* | 22,6* | 22,6* | 20,2* | 20,2* | 17,9*  | 17,9* | 15,5*  | 15,5*  |       |        |       |        | 12,1*  | 12,1* | 74'11" |       |       |        |        |
| 0   | SW            | 18,8*      | 18,8* | 35,8* | 35,8* | 43,8* | 43,8* | 37,2* | 37,2* | 32,1* | 32,1* | 28,1* | 28,1* | 24,8* | 24,8* | 22,0* | 22,0* | 19,5* | 19,5* | 17,0*  | 17,0* | 14,3*  | 14,3*  |       |        |       |        | 10,9*  | 10,9* | 74'    |       |       |        |        |
| -5  | SW            | 20,2*      | 20,2* | 33,3* | 33,3* | 42,1* | 42,1* | 35,9* | 35,9* | 31,1* | 31,1* | 27,2* | 27,2* | 23,9* | 23,9* | 21,0* | 21,0* | 18,4* | 18,4* | 15,6*  | 15,6* | 12,3*  | 12,3*  |       |        |       |        | 11,3*  | 11,3* | 71' 2" |       |       |        |        |
| -10 | SW            | 22,5*      | 22,5* | 33,7* | 33,7* | 39,0* | 39,0* | 33,6* | 33,6* | 29,2* | 29,2* | 25,5* | 25,5* | 22,3* | 22,3* | 19,4* | 19,4* | 16,6* | 16,6* | 13,5*  | 13,5* |        |        |       |        |       |        | 12,2*  | 12,2* | 66'11" |       |       |        |        |
| -15 | SW            |            |       | 35,5* | 35,5* | 34,4* | 34,4* | 30,1* | 30,1* | 26,4* | 26,4* | 23,0* | 23,0* | 20,0* | 20,0* | 17,0* | 17,0* | 14,0* | 14,0* |        |       |        |        |       |        |       |        |        |       |        | 13,8* | 13,8* | 60' 4" |        |
| -20 | SW            |            |       |       |       |       |       |       |       | 22,3* | 22,3* |       |       |       |       |       |       |       |       |        |       |        |        |       |        |       |        |        |       |        |       | 19,5* | 19,5*  | 44'10" |

**Height** **Can be slewed through 360°** **In longitudinal position of undercarriage** **Max. reach** **\* Limited by hydr. capacity**

The lift capacities on the stick end without attachment are stated in lb x 1,000 and can be slewed through 360° on a firm, level supporting surface. Capacities are valid for 30" wide flat pads. Indicated loads based on the ISO 10567 standard and do not exceed 75% of tipping or 87% of hydraulic capacity. The lift capacity values indicated are attained at the corresponding operating temperature. This operating temperature is ensured by continuous movement of the boom. Weights of fitted attachments (grabs, load hooks, etc.) and load accommodation attachment are to be deducted from the lift capacity values. The lift capacity of the unit is limited by its stability, the lifting capability of the hydraulic elements, or the maximum permissible lifting capacity of the load hook.

# LH 80 C HR – Equipment AG22

## Port – Kinematic 2D

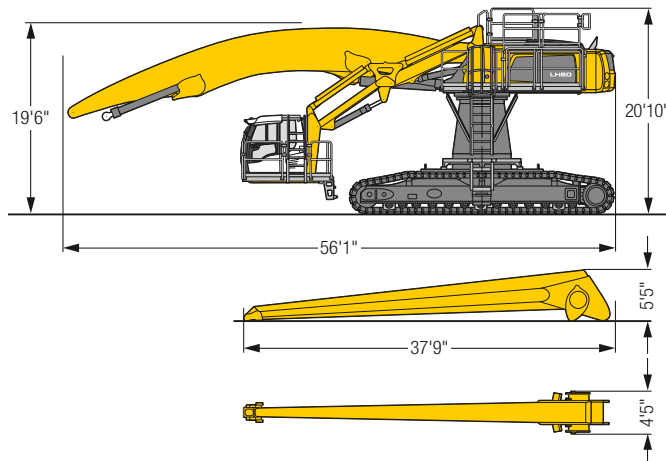


### Operating Weight and Ground Pressure

The operating weight includes the basic machine with turret 6'7", hydr. cab elevation, angled boom 41', straight stick 36'1" and grab for loose material GMZ 80/7.85 yd<sup>3</sup>.

|                 |            |
|-----------------|------------|
| Weight          | 215,300 lb |
| Pad width       | 30"        |
| Ground pressure | on request |

### Dimensions



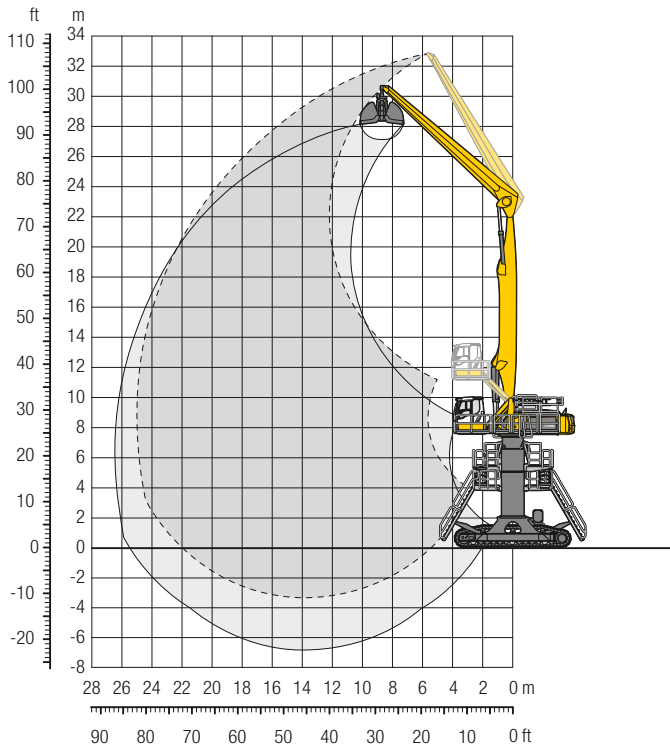
| ft  | Undercarriage | Reach (ft) |       |       |       |       |       |       |       |       |       |       |       |       | ft in |  |  |       |       |        |
|-----|---------------|------------|-------|-------|-------|-------|-------|-------|-------|-------|-------|-------|-------|-------|-------|--|--|-------|-------|--------|
|     |               | 20 ft      | 25 ft | 30 ft | 35 ft | 40 ft | 45 ft | 50 ft | 55 ft | 60 ft | 65 ft | 70 ft | 75 ft | 80 ft |       |  |  |       |       |        |
| 80  | SW            |            |       |       |       |       |       |       |       |       |       |       |       |       |       |  |  | 20,9" | 20,9" | 34'11" |
| 75  | SW            |            |       |       |       |       |       |       |       |       |       |       |       |       |       |  |  | 18,6" | 18,6" | 42'11" |
| 70  | SW            |            |       |       |       |       |       |       |       |       |       |       |       |       |       |  |  | 17,3" | 17,3" | 49' 2" |
| 65  | SW            |            |       |       |       |       |       |       |       |       |       |       |       |       |       |  |  | 16,4" | 16,4" | 54' 2" |
| 60  | SW            |            |       |       |       |       |       |       |       |       |       |       |       |       |       |  |  | 15,8" | 15,8" | 58' 5" |
| 55  | SW            |            |       |       |       |       |       |       |       |       |       |       |       |       |       |  |  | 15,4" | 15,4" | 61'11" |
| 50  | SW            |            |       |       |       |       |       |       |       |       |       |       |       |       |       |  |  | 15,1" | 15,1" | 64'10" |
| 45  | SW            |            |       |       |       |       |       |       |       |       |       |       |       |       |       |  |  | 15,0" | 15,0" | 67' 4" |
| 40  | SW            |            |       |       |       |       |       |       |       |       |       |       |       |       |       |  |  | 15,0" | 15,0" | 69' 2" |
| 35  | SW            |            |       |       |       |       |       |       |       |       |       |       |       |       |       |  |  | 15,0" | 15,0" | 70'10" |
| 30  | SW            |            |       |       |       |       |       |       |       |       |       |       |       |       |       |  |  | 15,2" | 15,2" | 72'    |
| 25  | SW            |            |       |       |       |       |       |       |       |       |       |       |       |       |       |  |  | 15,4" | 15,4" | 72'10" |
| 20  | SW            |            |       |       |       |       |       |       |       |       |       |       |       |       |       |  |  | 15,8" | 15,8" | 73' 2" |
| 15  | SW            |            |       |       |       |       |       |       |       |       |       |       |       |       |       |  |  | 15,7" | 15,7" | 73' 4" |
| 10  | SW            |            |       |       |       |       |       |       |       |       |       |       |       |       |       |  |  | 15,6" | 15,6" | 73' 1" |
| 5   | SW            |            |       |       |       |       |       |       |       |       |       |       |       |       |       |  |  | 15,5" | 15,5" | 72' 6" |
| 0   | SW            |            |       |       |       |       |       |       |       |       |       |       |       |       |       |  |  | 15,4" | 15,4" | 71' 7" |
| - 5 | SW            |            |       |       |       |       |       |       |       |       |       |       |       |       |       |  |  | 15,2" | 15,2" | 70' 2" |
| -10 | SW            |            |       |       |       |       |       |       |       |       |       |       |       |       |       |  |  | 14,8" | 14,8" | 68' 6" |
| -15 | SW            |            |       |       |       |       |       |       |       |       |       |       |       |       |       |  |  | 14,3" | 14,3" | 66' 5" |
| -20 | SW            |            |       |       |       |       |       |       |       |       |       |       |       |       |       |  |  | 15,3" | 15,3" | 61' 1" |
| -25 | SW            |            |       |       |       |       |       |       |       |       |       |       |       |       |       |  |  | 19,7" | 19,7" | 49' 2" |

Height Can be slewed through 360° In longitudinal position of undercarriage Max. reach \* Limited by hydr. capacity

The lift capacities on the stick end without attachment are stated in lb x 1,000 and can be slewed through 360° on a firm, level supporting surface. Capacities are valid for 30" wide flat pads. Indicated loads based on the ISO 10567 standard and do not exceed 75% of tipping or 87% of hydraulic capacity. The lift capacity values indicated are attained at the corresponding operating temperature. This operating temperature is ensured by continuous movement of the boom. Weights of fitted attachments (grabs, load hooks, etc.) and load accommodation attachment are to be deducted from the lift capacity values. The lift capacity of the unit is limited by its stability, the lifting capability of the hydraulic elements, or the maximum permissible lifting capacity of the load hook.

# LH 80 C Gantry – Equipment GG25

## Port – Kinematic 2A

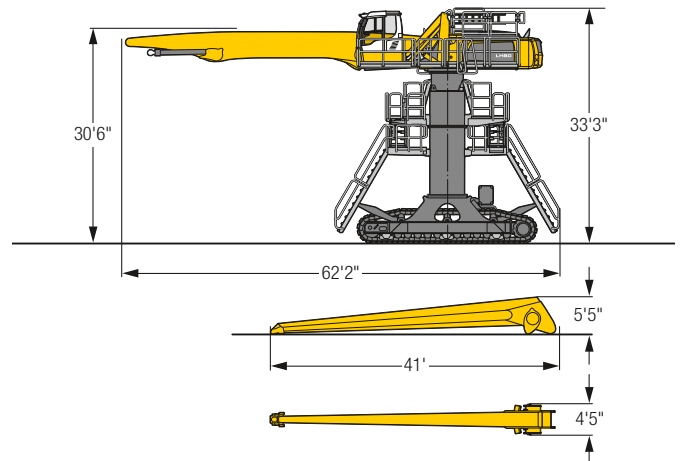


### Operating Weight and Ground Pressure

The operating weight includes the basic machine with hydr. cab elevation, straight boom 44'3", straight stick 39'4" and grab for loose material GMZ 80/5.23 yd<sup>3</sup>.

|                 |            |
|-----------------|------------|
| Weight          | 256,100 lb |
| Pad width       | 30"        |
| Ground pressure | on request |

### Dimensions



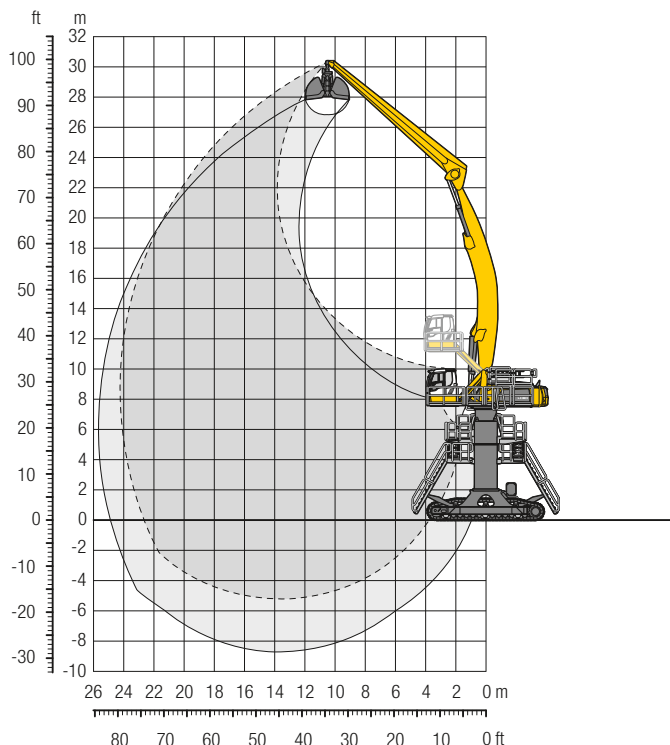
| ft  | Undercarriage | Boom Length |       |       |       |       |       |       |       |       |       |       |       |       |       | ft in |       |       |        |
|-----|---------------|-------------|-------|-------|-------|-------|-------|-------|-------|-------|-------|-------|-------|-------|-------|-------|-------|-------|--------|
|     |               | 20 ft       | 25 ft | 30 ft | 35 ft | 40 ft | 45 ft | 50 ft | 55 ft | 60 ft | 65 ft | 70 ft | 75 ft | 80 ft |       |       |       |       |        |
| 105 | Gantry        |             |       |       |       |       |       |       |       |       |       |       |       |       |       |       | 26,4" | 26,4" | 27'11" |
| 100 | Gantry        |             | 29,1" | 29,1" |       |       |       |       |       |       |       |       |       |       |       |       | 21,2" | 21,2" | 39' 2" |
| 95  | Gantry        |             |       | 28,4" | 28,4" | 25,1" | 25,1" |       |       |       |       |       |       |       |       |       | 18,7" | 18,7" | 47' 5" |
| 90  | Gantry        |             |       |       | 27,5" | 27,5" | 24,9" | 24,9" | 21,2" | 21,2" |       |       |       |       |       |       | 17,0" | 17,0" | 53'10" |
| 85  | Gantry        |             |       |       |       | 26,7" | 26,7" | 24,4" | 24,4" | 21,0" | 21,0" |       |       |       |       |       | 15,1" | 15,1" | 63' 7" |
| 80  | Gantry        |             |       |       |       | 26,7" | 26,7" | 24,3" | 24,3" | 22,2" | 22,2" | 20,6" | 20,6" | 19,1" | 19,1" |       |       |       |        |
| 75  | Gantry        |             |       |       |       | 26,5" | 26,5" | 24,1" | 24,1" | 22,1" | 22,1" | 20,4" | 20,4" | 19,0" | 19,0" | 17,7" | 17,7" |       |        |
| 70  | Gantry        |             |       |       |       | 26,5" | 26,5" | 24,1" | 24,1" | 22,1" | 22,1" | 20,4" | 20,4" | 18,9" | 18,9" | 17,6" | 17,6" | 15,1" | 15,1"  |
| 65  | Gantry        |             |       |       |       | 26,6" | 26,6" | 24,1" | 24,1" | 22,1" | 22,1" | 20,4" | 20,4" | 18,9" | 18,9" | 17,6" | 17,6" | 16,4" | 16,4"  |
| 60  | Gantry        |             |       |       |       | 26,8" | 26,8" | 24,3" | 24,3" | 22,2" | 22,2" | 20,4" | 20,4" | 18,9" | 18,9" | 17,6" | 17,6" | 16,3" | 16,3"  |
| 55  | Gantry        |             |       |       |       | 27,2" | 27,2" | 24,6" | 24,6" | 22,4" | 22,4" | 20,6" | 20,6" | 19,0" | 19,0" | 17,6" | 17,6" | 16,3" | 16,3"  |
| 50  | Gantry        |             |       |       | 30,4" | 30,4" | 27,7" | 27,7" | 24,9" | 24,9" | 22,6" | 22,6" | 20,7" | 20,7" | 19,1" | 19,1" | 17,6" | 17,6" | 16,3"  |
| 45  | Gantry        |             |       |       |       | 29,6" | 29,6" | 31,9" | 31,9" | 28,2" | 28,2" | 25,3" | 25,3" | 22,9" | 22,9" | 20,9" | 20,9" | 19,2" | 19,2"  |
| 40  | Gantry        |             | 28,8" | 28,8" | 34,4" | 34,4" | 32,8" | 32,8" | 28,8" | 28,8" | 25,7" | 25,7" | 23,2" | 23,2" | 21,1" | 21,1" | 19,3" | 19,3" | 17,8"  |
| 35  | Gantry        | 32,3"       | 32,3" | 40,8" | 40,8" | 39,3" | 39,3" | 33,7" | 33,7" | 29,4" | 29,4" | 26,2" | 26,2" | 23,5" | 23,5" | 21,3" | 21,3" | 19,4" | 19,4"  |
| 30  | Gantry        | 62,3"       | 62,3" | 49,1" | 49,1" | 40,5" | 40,5" | 34,5" | 34,5" | 30,0" | 30,0" | 26,5" | 26,5" | 23,7" | 23,7" | 21,4" | 21,4" | 19,5" | 19,5"  |
| 25  | Gantry        | 30,7"       | 30,7" | 50,6" | 50,6" | 41,5" | 41,5" | 35,2" | 35,2" | 30,5" | 30,5" | 26,8" | 26,8" | 23,9" | 23,9" | 21,5" | 21,5" | 19,5" | 19,5"  |
| 20  | Gantry        | 16,2"       | 16,2" | 43,8" | 43,8" | 42,1" | 42,1" | 35,5" | 35,5" | 30,7" | 30,7" | 26,9" | 26,9" | 23,9" | 23,9" | 21,4" | 21,4" | 19,3" | 19,3"  |
| 15  | Gantry        | 14,2"       | 14,2" | 29,5" | 29,5" | 41,9" | 41,9" | 35,4" | 35,4" | 30,6" | 30,6" | 26,8" | 26,8" | 23,7" | 23,7" | 21,2" | 21,2" | 19,0" | 19,0"  |
| 10  | Gantry        | 14,9"       | 14,9" | 26,0" | 26,0" | 40,8" | 40,8" | 34,7" | 34,7" | 30,0" | 30,0" | 26,3" | 26,3" | 23,2" | 23,2" | 20,6" | 20,6" | 18,4" | 18,4"  |
| 5   | Gantry        | 16,6"       | 16,6" | 25,7" | 25,7" | 38,8" | 38,8" | 33,2" | 33,2" | 28,9" | 28,9" | 25,3" | 25,3" | 22,3" | 22,3" | 19,7" | 19,7" | 17,4" | 17,4"  |
| 0   | Gantry        | 18,7"       | 18,7" | 26,7" | 26,7" | 35,5" | 35,5" | 30,9" | 30,9" | 27,0" | 27,0" | 23,7" | 23,7" | 20,9" | 20,9" | 18,3" | 18,3" | 16,0" | 16,0"  |
| -5  | Gantry        |             |       | 28,5" | 28,5" | 31,0" | 31,0" | 27,5" | 27,5" | 24,3" | 24,3" | 21,4" | 21,4" | 18,8" | 18,8" | 16,3" | 16,3" | 14,0" | 14,0"  |
| -10 | Gantry        |             |       |       |       |       |       | 20,5" | 20,5" | 18,1" | 18,1" | 15,8" | 15,8" |       |       |       |       | 11,5" | 11,5"  |

**Height** Can be slewed through 360° In longitudinal position of undercarriage Max. reach \* Limited by hydr. capacity

The lift capacities on the stick end without attachment are stated in lb x 1,000 and can be slewed through 360° on a firm, level supporting surface. Capacities are valid for 30" wide flat pads. Indicated loads based on the ISO 10567 standard and do not exceed 75% of tipping or 87% of hydraulic capacity. The lift capacity values indicated are attained at the corresponding operating temperature. This operating temperature is ensured by continuous movement of the boom. Weights of fitted attachments (grabs, load hooks, etc.) and load accommodation attachment are to be deducted from the lift capacity values. The lift capacity of the unit is limited by its stability, the lifting capability of the hydraulic elements, or the maximum permissible lifting capacity of the load hook.

# LH 80 C Gantry – Equipment AG24

## Port – Kinematic 2D

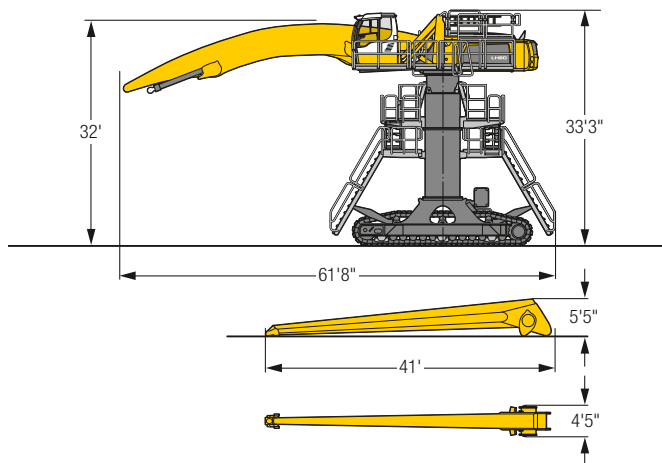


### Operating Weight and Ground Pressure

The operating weight includes the basic machine with hydr. cab elevation, angled boom 44'3", straight stick 39'4" and grab for loose material GMZ 80/5.23 yd<sup>3</sup>.

|                 |            |
|-----------------|------------|
| Weight          | 257,800 lb |
| Pad width       | 30"        |
| Ground pressure | on request |

### Dimensions





| ft  | Undercarriage | 20 ft | 25 ft | 30 ft | 35 ft | 40 ft | 45 ft | 50 ft | 55 ft | 60 ft | 65 ft | 70 ft | 75 ft | 80 ft | ft in |
|-----|---------------|-------|-------|-------|-------|-------|-------|-------|-------|-------|-------|-------|-------|-------|-------|
| 100 | Gantry        |       |       |       |       |       |       |       |       |       |       |       |       |       |       |
| 95  | Gantry        |       |       |       |       | 19,6" | 19,6" |       |       |       |       |       |       |       | 17,6" |
| 90  | Gantry        |       |       |       |       |       | 19,8" | 19,8" |       |       |       |       |       |       | 16,1" |
| 85  | Gantry        |       |       |       |       |       | 20,3" | 20,3" | 18,9" | 18,9" | 15,5" | 15,5" |       |       | 15,2" |
| 80  | Gantry        |       |       |       |       |       | 20,0" | 20,0" | 18,6" | 18,6" | 17,4" | 17,4" | 14,7" | 14,7" | 14,5" |
| 75  | Gantry        |       |       |       |       |       |       |       | 18,4" | 18,4" | 17,3" | 17,3" | 16,3" | 16,3" | 14,0" |
| 70  | Gantry        |       |       |       |       |       |       |       | 18,4" | 18,4" | 17,2" | 17,2" | 16,2" | 16,2" | 13,7" |
| 65  | Gantry        |       |       |       |       |       | 19,9" | 19,9" | 18,4" | 18,4" | 17,2" | 17,2" | 16,2" | 16,2" | 13,5" |
| 60  | Gantry        |       |       |       |       |       | 20,1" | 20,1" | 18,6" | 18,6" | 17,3" | 17,3" | 16,2" | 16,2" | 13,4" |
| 55  | Gantry        |       |       |       |       |       | 20,4" | 20,4" | 18,8" | 18,8" | 17,5" | 17,5" | 16,3" | 16,3" | 13,4" |
| 50  | Gantry        |       |       |       |       | 22,9" | 22,9" | 20,9" | 20,9" | 19,2" | 19,2" | 17,7" | 17,7" | 16,5" | 13,4" |
| 45  | Gantry        |       |       |       | 26,4" | 26,4" | 23,6" | 23,6" | 21,4" | 21,4" | 19,5" | 19,5" | 18,0" | 18,0" | 13,5" |
| 40  | Gantry        |       |       | 31,5" | 31,5" | 27,5" | 27,5" | 24,4" | 24,4" | 22,0" | 22,0" | 20,0" | 20,0" | 18,4" | 13,4" |
| 35  | Gantry        | 49,2" | 49,2" | 39,6" | 39,6" | 33,2" | 33,2" | 28,7" | 28,7" | 25,3" | 25,3" | 22,6" | 22,6" | 20,5" | 13,3" |
| 30  | Gantry        | 53,9" | 53,9" | 42,3" | 42,3" | 35,0" | 35,0" | 29,9" | 29,9" | 26,2" | 26,2" | 23,3" | 23,3" | 21,0" | 13,2" |
| 25  | Gantry        | 53,9" | 53,9" | 44,7" | 44,7" | 36,7" | 36,7" | 31,1" | 31,1" | 27,0" | 27,0" | 23,9" | 23,9" | 21,5" | 13,1" |
| 20  | Gantry        | 27,5" | 27,5" | 46,7" | 46,7" | 38,1" | 38,1" | 32,1" | 32,1" | 27,8" | 27,8" | 24,5" | 24,5" | 21,9" | 13,0" |
| 15  | Gantry        | 22,2" | 22,2" | 39,9" | 39,9" | 39,1" | 39,1" | 32,9" | 32,9" | 28,4" | 28,4" | 25,0" | 25,0" | 22,3" | 12,9" |
| 10  | Gantry        | 21,1" | 21,1" | 33,4" | 33,4" | 39,7" | 39,7" | 33,4" | 33,4" | 28,8" | 28,8" | 25,3" | 25,3" | 22,5" | 12,8" |
| 5   | Gantry        | 21,6" | 21,6" | 31,3" | 31,3" | 39,6" | 39,6" | 33,5" | 33,5" | 28,9" | 28,9" | 25,3" | 25,3" | 22,5" | 12,5" |
| 0   | Gantry        | 22,8" | 22,8" | 31,0" | 31,0" | 38,8" | 38,8" | 33,0" | 33,0" | 28,6" | 28,6" | 25,0" | 25,0" | 22,2" | 12,2" |
| -5  | Gantry        | 24,2" | 24,2" | 31,6" | 31,6" | 37,1" | 37,1" | 31,8" | 31,8" | 27,7" | 27,7" | 24,3" | 24,3" | 21,5" | 11,8" |
| -10 | Gantry        |       |       | 32,8" | 32,8" | 34,5" | 34,5" | 29,9" | 29,9" | 26,1" | 26,1" | 23,0" | 23,0" | 20,3" | 12,3" |
| -15 | Gantry        |       |       |       |       | 27,0" | 27,0" | 23,8" | 23,8" | 20,9" | 20,9" | 18,4" | 18,4" | 16,0" | 14,8" |


Height Can be slewed through 360° In longitudinal position of undercarriage Max. reach \* Limited by hydr. capacity


The lift capacities on the stick end without attachment are stated in lb x 1,000 and can be slewed through 360° on a firm, level supporting surface. Capacities are valid for 30" wide flat pads. Indicated loads based on the ISO 10567 standard and do not exceed 75% of tipping or 87% of hydraulic capacity. The lift capacity values indicated are attained at the corresponding operating temperature. This operating temperature is ensured by continuous movement of the boom. Weights of fitted attachments (grabs, load hooks, etc.) and load accommodation attachment are to be deducted from the lift capacity values. The lift capacity of the unit is limited by its stability, the lifting capability of the hydraulic elements, or the maximum permissible lifting capacity of the load hook.

# Equipment

|  | 80 M | 80 C | 80 M HR | 80 C HR | 80 C Gantry |
|--|------|------|---------|---------|-------------|
|  <b>Undercarriage</b> |      |      |         |         |             |
| Track pads, variants   |      | +    |         | +       | +           |
| Individual control outriggers  | +    |      | •       |         |             |
| Three-piece chain guide  |      | •    |         | •       | •           |
| Shuttle axle lock, automatic   | •    |      | •       |         |             |
| Outrigger monitoring system  | +    |      | +       |         |             |
| Tires, variants  | +    |      | +       |         |             |
| Protection for piston rods, outriggers   | +    |      | +       |         |             |
| Two lockable storage compartments  | •    |      |         |         |             |

|  | 80 M | 80 C | 80 M HR | 80 C HR | 80 C Gantry |
|--|------|------|---------|---------|-------------|
|  <b>Uppercarriage</b> |      |      |         |         |             |
| Uppercarriage right side light, 1 piece, LED   | •    | •    | •       | •       | •           |
| Uppercarriage rear light, 2 pieces, LED  | +    | +    |         |         |             |
| Uppercarriage underneath rear light, 1 piece, LED  |      |      | +       | +       | +           |
| Refuelling system with filling pump  | +    | +    | +       | +       | +           |
| Railing on uppercarriage   | +    | +    | •       | •       | •           |
| Generator  | +    | +    | +       | +       | +           |
| Main battery switch for electrical system  | •    | •    | •       | •       | •           |
| Amber beacon, at uppercarriage, LED double flash   | +    | +    | +       | +       | +           |
| Protection for headlights  | +    | +    |         |         |             |
| Protection for rear lights   | +    | +    |         |         |             |
| Tool equipment, extended   | •    | •    | •       | •       | •           |

|   | 80 M | 80 C | 80 M HR | 80 C HR | 80 C Gantry |
|---|------|------|---------|---------|-------------|
|  <b>Hydraulic System</b> |      |      |         |         |             |
| Electronic pump regulation  | •    | •    | •       | •       | •           |
| Liebherr hydraulic oil from -4 °F to +104 °F  | •    | •    | •       | •       | •           |
| Liebherr hydraulic oil, biologically degradable   | +    | +    | +       | +       | +           |
| Liebherr hydraulic oil, specially for warm or cold regions  | +    | +    | +       | +       | +           |
| Magnetic rod in hydraulic tank  | •    | •    | •       | •       | •           |
| Bypass filter   | +    | +    | +       | +       | +           |
| Preheating hydraulic oil  | +    | +    | +       | +       | +           |

|   | 80 M | 80 C | 80 M HR | 80 C HR | 80 C Gantry |
|---|------|------|---------|---------|-------------|
|  <b>Engine</b> |      |      |         |         |             |
| Fuel anti-theft device  | +    | +    | +       | +       | +           |
| Air pre-filter with dust discharge  | +    | +    | +       | +       | +           |
| Automatic engine shut-down (time adjustable)  | +    | +    | +       | +       | +           |
| Preheating fuel   | +    | +    | +       | +       | +           |
| Preheating coolant  | +    | +    | +       | +       | +           |
| Preheating engine oil*  | +    | +    | +       | +       | +           |

|  | 80 M | 80 C | 80 M HR | 80 C HR | 80 C Gantry |
|--|------|------|---------|---------|-------------|
|  <b>Cooling System</b> |      |      |         |         |             |
| Reversible fan drive, fully automatic  | +    | +    | +       | +       | +           |
| Protective grid in front of cooler intake  | •    | •    | •       | •       | •           |





## Operator's Cab

|  | 80 M | 80 C | 80 M HR | 80 C HR | 80 C Gantry |
|--|------|------|---------|---------|-------------|
| Stabilizer assistant   | +    |      | +       |         |             |
| Stabilizer, control lever, left console  | +    |      | +       |         |             |
| Stabilizer, proportional control on left joystick                                      | •    |      | •       |         |             |
| Cab lights rear, LED   | +    | +    | +       | +       | +           |
| Cab lights front, LED  | +    | +    | +       | +       | +           |
| Cab lights front, LED (under rain cover)   | •    | •    | •       | •       | •           |
| Armrest adjustable   | •    | •    | •       | •       | •           |
| Circular bubble level  | +    | +    | •       | •       | •           |
| Slewing gear brake Comfort, button on the left or right joystick                       | +    | +    | +       | +       | +           |
| Driver profile, personalized (max. 5 drivers)  | +    | +    | +       | +       | +           |
| Operator's seat Comfort  | •    | •    | •       | •       | •           |
| Operator's seat Premium  | +    | +    | +       | +       | +           |
| Driving alarm (acoustic signal is emitted during travel, can be switched ON / OFF)     | +    | +    | +       | +       | +           |
| Fire extinguisher  | +    | +    | +       | +       | +           |
| Footrest   | +    | +    | +       | +       | +           |
| Horn, button on left joystick  | •    | •    | •       | •       | •           |
| Joystick steering  | •    |      | •       |         |             |
| Joystick and wheel steering (slim version)   | +    |      | +       |         |             |
| Cab elevation, hydraulic (LHC)   | •    | •    | •       | •       | •           |
| Cab elevation, hydraulic with double parallelogram (LHC-D)                             |      |      | +       | +       | +           |
| Cab elevation, rigid (LFC)   | +    | +    |         |         |             |
| Automatic air conditioning   | •    | •    | •       | •       | •           |
| Wheel steering (slim version)  | +    |      | +       |         |             |
| LiDAT, vehicle fleet management  | •    | •    | •       | •       | •           |
| Proportional control   | •    | •    | •       | •       | •           |
| Radio Comfort, control via display with handsfree set                                  | +    | +    | +       | +       | +           |
| Preparation for radio installation   | •    | •    | •       | •       | •           |
| Back-up alarm (acoustic signal is emitted traveling backward, can not be switched off) | +    |      | +       |         |             |
| Amber beacon, on cabin, LED double flash   | +    | +    | +       | +       | +           |
| Windows made from impact-resistant laminated safety glass                              | +    | +    | •       | •       | •           |
| Windscreen wiper, roof   | +    | +    | +       | +       | +           |
| Windshield wiper, entire windscreen  | •    | •    | •       | •       | •           |
| Top guard  | +    | +    | +       | +       | +           |
| Front guard, adjustable  | +    | +    | +       | +       | +           |
| Sun visor  | +    | +    | +       | +       | +           |
| Left control console, folding  | •    | •    | •       | •       | •           |



## Equipment

|  | 80 M | 80 C | 80 M HR | 80 C HR | 80 C Gantry |
|--|------|------|---------|---------|-------------|
| Boom lights, 2 pieces, LED   | •    | •    | •       | •       | •           |
| Stick lights, 2 pieces, LED  | •    | •    | •       | •       | •           |
| Boom shutoff (retract/extend), electronically                      | +    | +    | •       | •       | •           |
| Equipment with electro-hydraulic end position control              | •    | •    | •       | •       | •           |
| AutoLift   | +    | +    | +       | +       | +           |
| Pressure warning mechanism hoist cylinder                          | •    | •    | •       | •       | •           |
| ERC system   | •    | •    | •       | •       | •           |
| Filter system for attachment                                       | +    | +    | +       | +       | +           |
| Electronic lift limitation   | +    | +    | +       | +       | +           |
| Boom cylinder cushioning   | •    | •    | •       | •       | •           |
| Stick camera (with separate monitor), bottom side, with protection | +    | +    | +       | +       | +           |
| Load torque limitation   | +    | +    | +       | +       | +           |
| Liebherr multi coupling system                                     | +    | +    | +       | +       | +           |
| Pipe fracture safety valves hoist cylinders                        | •    | •    | •       | •       | •           |
| Pipe fracture safety valves stick cylinders                        | •    | •    | •       | •       | •           |
| Quick coupling system MH 110B                                      | +    | +    | +       | +       | +           |
| Protection for piston rod, energy recovering cylinder              | +    | +    | +       | +       | +           |
| Protection for piston rods, hoist cylinder                         | +    | +    | +       | +       | +           |
| Stick shutoff (retract), electronically                            | •    | •    | •       | •       | •           |
| Stick shutoff (retract/extend), electronically                     | +    | +    | +       | +       | +           |
| Retract stick without pressure                                     | •    | •    | •       | •       | •           |
| Sticks with quick coupling   | +    | +    | +       | +       | +           |
| Overload warning device  | +    | +    | +       | +       | +           |



## Complete Machine

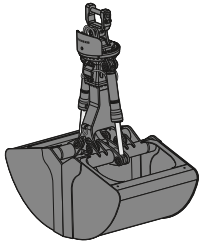
|   | 80 M | 80 C | 80 M HR | 80 C HR | 80 C Gantry |
|---|------|------|---------|---------|-------------|
| <b>Lubrication</b>  |      |      |         |         |             |
| Lubrication undercarriage, manually – decentralized (grease points)       | •    |      |         |         |             |
| Lubrication undercarriage, manually – centralized (one grease point)      | +    |      | •       |         |             |
| Central lubrication system for uppercarriage and equipment, automatically | •    | •    | •       | •       | •           |
| Central lubrication system for undercarriage, automatically               | +    |      | +       |         |             |
| Central lubrication system, extension for attachment                      | +    | +    | +       | +       | +           |
| <b>Special coating</b>  |      |      |         |         |             |
| Special coating, variants   | +    | +    | +       | +       | +           |
| <b>Monitoring</b>   |      |      |         |         |             |
| Rear view monitoring with camera  | •    | •    | •       | •       | •           |
| Side view monitoring with camera  | •    | •    | •       | •       | •           |

• = Standard, + = Option

\* = country-dependent

Options and/or special equipments, supplied by vendors other than Liebherr, are only to be installed with the knowledge and approval of Liebherr in order to retain warranty.

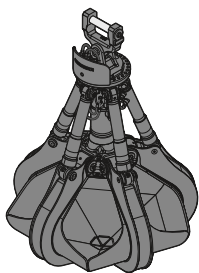
# Attachments



## Grab for Loose Material

Shells for loose material with cutting edge (without teeth)

|                                       |                    | Grab model GMZ 50  |       |       |       |       |       |       |  |
|---------------------------------------|--------------------|--------------------|-------|-------|-------|-------|-------|-------|--|
| Width of shells                       | ft in              | 4'7"               | 5'3"  | 5'11" | 6'7"  | 7'3"  | 7'10" | 10'6" |  |
| Capacity                              | yd <sup>3</sup>    | 4.58               | 5.23  | 5.88  | 6.54  | 7.19  | 7.85  | 10.46 |  |
| Loose material, specific weight up to | lb/yd <sup>3</sup> | 1,854              | 1,854 | 1,854 | 1,854 | 1,854 | 1,854 | 1,854 |  |
| Weight                                | lb                 | 5,940              | 6,240 | 6,405 | 6,690 | 6,990 | 7,275 | 8,445 |  |
|                                       |                    | Grab model GMZ 80  |       |       |       |       |       |       |  |
| Width of shells                       | ft in              | 4'3"               | 4'11" | 5'9"  | 6'7"  | 7'3"  | 8'6"  |       |  |
| Capacity                              | yd <sup>3</sup>    | 3.92               | 4.58  | 5.23  | 5.88  | 6.54  | 7.85  |       |  |
| Weight                                | lb                 | 5,545              | 5,800 | 6,120 | 6,440 | 6,700 | 7,220 |       |  |
|                                       |                    | Grab model GMZ 120 |       |       |       |       |       |       |  |
| Width of shells                       | ft in              | 5'3"               | 5'11" | 6'7"  | 7'3"  | 7'10" | 9'2"  |       |  |
| Capacity                              | yd <sup>3</sup>    | 5.23               | 5.88  | 6.54  | 7.19  | 7.85  | 9.15  |       |  |
| Weight                                | lb                 | 6,700              | 6,910 | 7,265 | 7,550 | 7,815 | 8,435 |       |  |



## Multi-Tine Grab

closed

|          |                 | Grab model GMM 80-5 (5 tines)  |       |       |      |
|----------|-----------------|--------------------------------|-------|-------|------|
| Capacity | yd <sup>3</sup> | 1.44*                          | 1.83* | 2.22* |      |
| Weight   | lb              | 5,380                          | 5,690 | 6,040 |      |
|          |                 | Grab model GMM 120-5 (5 tines) |       |       |      |
| Capacity | yd <sup>3</sup> | 2.22                           | 2.62  | 3.27  | 3.92 |

\* heart-shaped



## Wood Grab

|                        |                 | Grab model GMH 50 round-shaped (overlapping, horizontal cylinders)         |        |       |       |       |
|------------------------|-----------------|--|--------|-------|-------|-------|
| Size                   | yd <sup>2</sup> | 2.99   | 2.99   | 3.35  | 3.83  | 4.31  |
| Cutting width          | ft in           | 2'10"  | 3'3"   | 3'3"  | 3'3"  | 3'3"  |
| Height of grab, closed | ft in           | 8'3"   | 8'4"   | 8'8"  | 9'1"  | 9'8"  |
| Weight                 | lb              | 4,665  | 4,830  | 5,005 | 5,135 | 5,270 |
|                        |                 | Grab model GMH 80 round-shaped (complete overlapping, vertical cylinders)  |        |       |       |       |
| Size                   | yd <sup>2</sup> | 1.91   | 2.27   | 2.63  | 2.99  |       |
| Cutting width          | ft in           | 2'10"  | 2'10"  | 2'10" | 2'10" |       |
| Height of grab, closed | ft in           | 10'6"  | 10'11" | 11'5" | 11'9" |       |
| Weight                 | lb              | 4,840  | 4,940  | 4,970 | 5,105 |       |
|                        |                 | Grab model GMH 120 round-shaped (complete overlapping, vertical cylinders) |        |       |       |       |
| Size                   | yd <sup>2</sup> | 3.35   | 3.83   |       |       |       |
| Cutting width          | ft in           | 2'10"  | 2'10"  |       |       |       |
| Height of grab, closed | ft in           | 12'8"  | 13'2"  |       |       |       |
| Weight                 | lb              | 5,300  | 6,095  |       |       |       |

## Load Hook

|                        |    |        |
|------------------------|----|--------|
| Max. load              | lb | 55,115 |
| Height with suspension | ft | 4'     |
| Weight                 | lb | 562    |

## Magnet Devices / Lifting Magnets

| Generator                     | kW    | 20     | 30     |
|-------------------------------|-------|--------|--------|
| Electromagnet with suspension |       |        |        |
| Power                         | kW    | 11.7   | 17.8   |
| Diameter of magnet            | ft in | 4'11"  | 5'7"   |
| Weight                        | lb    | 5,290* | 7,275* |

\* only magnet plate

