

# SPECIFICATIONS

## HX235A LCR

Powered By Cummins Performance Series Engine

**Net Power**  
170 HP (127 kW)  
at 2,200 rpm

**Bucket Range**  
0.51 - 1.34 m<sup>3</sup>  
(0.67 - 1.75 yd<sup>3</sup>)  
**Standard Bucket**  
0.80 m<sup>3</sup> (1.05 yd<sup>3</sup>)

**Operating Weight**  
24,000 kg (52,910 lb) -  
24,560 kg (54,140 lb)



ENGINE	
Maker / Model	Cummins / B6.7
Type	6 cylinder, water cooled, 4-cycle, turbocharged charge air cooled, direct injection, electronic controlled diesel engine
Gross Power (SAE J1995)	129 kW (173 hp) at 2,200 rpm
Net Power (SAE J1349)	127 kW (170 hp) at 2,200 rpm
Max. Power	145 kW (195 hp) at 2,000 rpm
Max. Torque	881 N · m (650 lb · ft) at 1,300 rpm
Piston Displacement	6.7 l (409cu in)

HYDRAULIC SYSTEM	
MAIN PUMP	
Type	Variable displacement tandem axis piston pumps
Max. Flow	2 x 221 L/min (2 x 58.4 Us gpm / 2 x 48.6 UK gpm)
Sub-Pump For Pilot Circuit	Gear pump

Cross-sensing and fuel saving pump system.

AUXILIARY PRESSURE		
2 Way	Flow (l/min)	26~116 gpm (100~400 lpm)
	Pressure (bar)	1,450~5,076 psi (100~350 bar)
Rotating	Flow (l/min)	14 gpm / (53 lpm)
	Pressure (bar)	2,321 psi / (160 bar)

HYDRAULIC MOTORS	
Travel	Two speed axial pistons motor with brake valve and parking brake
Swing	Axial piston motor with automatic brake

RELIEF VALVE SETTING	
Implement Circuits	350 kgf/cm <sup>2</sup> (4,980 psi)
Travel	350 kgf/cm <sup>2</sup> (4,980 psi)
Power Boost (Boom, Arm, Bucket)	380 kgf/cm <sup>2</sup> (5,410 psi)
Swing Circuit	285 kgf/cm <sup>2</sup> (4,050 psi)
Pilot Circuit	40 kgf/cm <sup>2</sup> (570 psi)
Service Valve	Installed

HYDRAULIC CYLINDERS	
No. of Cylinder Bore X Stroke	Boom : 2-120 X 1,290 mm
	Arm : 1-140 X 1,510 mm
	Bucket : 1-120 X 1,055 mm
	Blade : 2-130 X 240 mm

DRIVES & BRAKES	
Drive Method	Fully hydrostatic type
Drive Motor	Axial piston motor, in-shoe design
Reduction System	Planetary reduction gear
Max. Drawbar Pull	22,200kgf (48,943 lbf)
Max. Travel Speed (High / Low)	5.6 km/hr (3.5mph) / 3.2 km/hr (2mph)
Gradeability	35° (70%)
Parking Brake	Multi wet disc

CONTROL	
Pilot pressure operated joysticks and pedals with levers provide almost effortless and fatigueless operation.	
Pilot Control	Two joysticks with one safety lever (LH): Swing and arm, (RH): Boom and bucket (ISO)
Traveling and Steering	Two levers with pedals
Engine Throttle	Electric, dial type

OPERATING WEIGHT (APPROXIMATE)			
Operating weight, including 5,680 mm (18' 8") boom, 2,920 mm (9' 7") arm, SAE heaped 0.80 m <sup>3</sup> (1.05 yd <sup>3</sup> ) bucket, lubricant, coolant, full fuel tank, full hydraulic tank, and all standard equipments.			

OPERATING WEIGHT			
Shoes		Operating Weight	Ground Pressure
Type	Width mm(in)	kg (lb)	kgf/cm <sup>2</sup> (psi)
Triple Grouser	600 (24")	24,000 (52,910)	0.51 (7.27)
	700 (28")	24,280 (53,530)	0.44 (6.30)
	800 (32")	24,560 (54,140)	0.39 (5.58)

SWING SYSTEM	
Swing Motor	Axial piston motor
Swing Reduction	Planetary gear reduction
Swing Bearing Lubrication	Grease-bathed
Swing Brake	Multi wet disc
Swing Speed	11.3 rpm

COOLANT & LUBRICANT CAPACITY		
	liter	US gal
Fuel tank	320.0	84.5
Engine coolant	40.0	10.6
Engine oil	23.1	6.1
Swing device	7.0	1.8
Final drive (each)	48.0	12.6
DEF / AdBlue R tank	48.0	12.6
Hydraulic system (including tank)	275.0	72.6
Hydraulic tank	160.0	42.3

UNDERCARRIAGE	
The X-leg type center frame is integrally welded with reinforced box-section track frames. The undercarriage includes lubricated rollers, idlers, track adjusters with shock absorbing springs and sprockets, and a track chain with double or triple grouser shoes.	

Center Frame	X - Leg Type
Track Frame	Pentagonal Box Type
No. of Shoes on Each Side	49 EA
No. of Carrier Roller on Each Side	2 EA
No. of Track Roller on Each Side	9 EA
No. of Rail Guard on Each Side	2 EA

CAB NOISE LEVEL	
Guaranteed noise level presented below can be differed depending on a range of factors such as operating condition, speed of a cooling fan, types of engine and so forth. Hearing protection shall be necessary if an operator is working in the improperly maintained cabin or exposed to a noisy environment by leaving doors and/or windows open. With cooling fan speed at maximum value:	
Operator sound pressure level (ISO 6396:2008)	70 dB(A)
Exterior sound power level (ISO 6395:2008)	98 dB(A)
* Distance of 15 m (49.2 ft), moving forward in second gear ratio	

AIR CONDITIONING SYSTEM	
The air condition system for the machine contains the fluorinated greenhouse gas with global warming potential of R134a. (Global Warming Potential : 1430)	
The system hold 0.75kg refrigerant consisting of a CO <sub>2</sub> equivalent 1.07kg metric tonne. For more information, Please refer to the manual.	

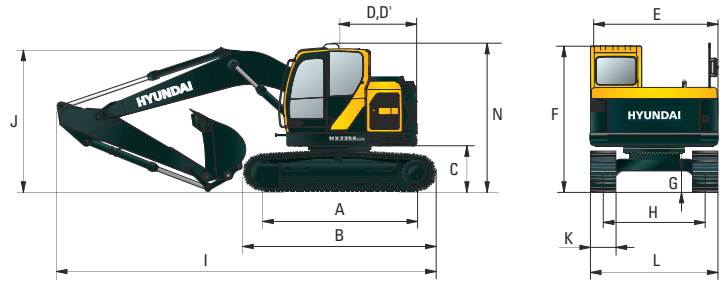
# SPECIFICATIONS HX235A LCR

Powered By Cummins Performance Series Engine

## HX235A LCR DIMENSIONS

Unit: mm (ft-in)

5.68 m (18' 8") BOOM and 2.0 m (6' 7"), 2.4 m (7' 10"), 2.92 m (9' 7") ARM



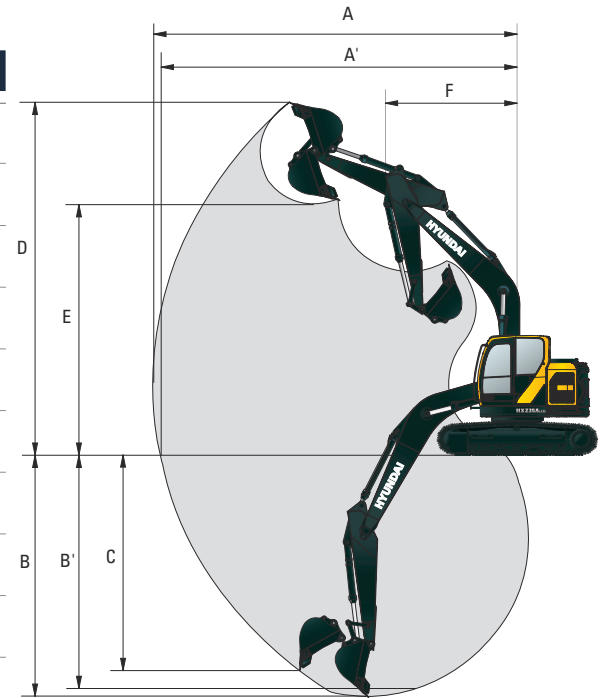
A	Tumbler distance	3,650 (12' 0")
B	Overall length of crawler	4,446 (14' 7")
C	Ground clearance of counterweight	1,080 (3' 7")
D	Tail-swing radius	1,780 (6' 04")
D'	Rear-end length	1,780 (6' 04")
E	Overall width of upper structure	2,980 (9' 9")
F	Overall height of cab	3,100 (10' 2")
G	Min. ground clearance	470 (1' 65")
H	Track gauge	2,390 (7' 10")
N	Overall Height of Guardrail w/ Grouser	3,290 (10' 10")

Boom length	5,680 (18' 8")		
Arm length	2,000 (6' 7")	2,400 (7' 10")	2,920 (9' 7")
J Overall length	9,050 (29' 8")	8,950 (29' 4")	8,910 (29' 3")
K Overall height of boom	3,240 (10' 8")	3,130 (10' 3")	3,040 (10' 0")
L Track shoe width	600 (1' 12")	700 (2' 4")	800 (2' 7")
M Overall Width	2,990 (9' 10")	3,090 (10' 2")	3,190 (10' 6")

## HX235A LCR WORKING RANGE

Unit : mm (ft-in)

Boom length	5,680 (18' 8")		
Arm length	2,000 (6' 7")	2,400 (7' 10")	2,920 (9' 7")
A Max. digging reach	9,040 (29' 8")	9,430 (30' 11")	9,910 (32' 6")
A' Max. digging reach on ground	8,860 (29' 1")	9,260 (30' 5")	9,750 (32' 0")
B Max. digging depth	5,750 (18' 10")	6,150 (20' 2")	6,670 (21' 11")
B' Max. digging depth (8' level)	5,490 (18' 0")	5,940 (19' 6")	6,490 (21' 4")
C Max. vertical wall digging depth	5,120 (16' 10")	5,570 (18' 3")	6,090 (20' 0")
D Max. digging height	10,130 (33' 3")	10,460 (34' 4")	10,820 (35' 6")
E Max. dumping height	7,220 (23' 8")	7,540 (24' 9")	7,900 (25' 11")
F Min. swing radius	2,860 (9' 5")	2,550 (8' 4")	2,350 (7' 9")



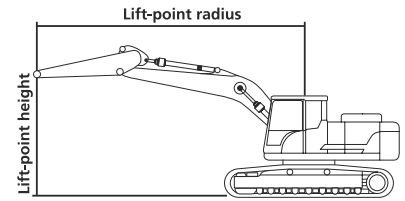
## DIGGING FORCE

Arm	Length	mm (ft.in)	2,000 (6' 7")	2,400 (7' 10")	2,920 (9' 7")	Remark
	Weight	kg (lb)	975 (2,150)	1,045 (2,300)	1,095 (2,410)	
Bucket digging force	SAE	kN	133.4 [144.8]	133.4 [144.8]	133.4 [144.8]	[ ] : Power Boost
		kgf	13,600 [14,770]	13,600 [14,770]	13,600 [14,770]	
		lbf	29,980 [32,550]	29,980 [32,550]	29,980 [32,550]	
	ISO	kN	152.0 [165.0]	152.0 [165.0]	152.0 [165.0]	
		kgf	15,500 [16,830]	15,500 [16,830]	15,500 [16,830]	
		lbf	34,170 [37,100]	34,170 [37,100]	34,170 [37,100]	
Arm crowd force	SAE	kN	144.2 [156.5]	119.6 [129.9]	102.0 [110.7]	
		kgf	14,700 [15,960]	12,200 [13,250]	10,400 [11,290]	
		lbf	32,410 [35,190]	26,900 [29,210]	22,930 [24,900]	
	ISO	kN	151.0 [164.0]	125.5 [136.3]	106.9 [116.1]	
		kgf	15,400 [16,720]	12,800 [13,900]	10,900 [11,830]	
		lbf	33,950 [36,860]	28,220 [30,640]	24,030 [26,090]	

Note: Arm weight includes bucket cylinder, linkage, and pin

# SPECIFICATIONS HX235A LCR

Powered By Cummins Performance Series Engine



## Lifting Capacity (With Dozer)

Capacities based on North American Standard Configuration in accordance with ISO condition 2 standard.

Boom: 5.68 m (18' 8")

Arm: 2.92 m (9' 7")

Shoe 800 mm (32") triple grouser, CWT 5,300 kg (11,685 lb)

Rating over front

Rating over side or 360 degree

Lift-point height m (ft)		At max. reach										Reach m (ft)		
		3.0 m (9.8 ft)		4.5 m (14.8 ft)		6.0 m (19.7 ft)		7.5 m (24.6 ft)		9.0 m (29.5 ft)			Capacity	
9.0 m	kg													
29.5 ft	lb													
7.5 m	kg					*4610	*4610	*4230	*4230			*3370	*3370	6.20
24.6 ft	lb					*10160	*10160	*9330	*9330			*7430	*7430	(20.3)
6.0 m	kg					*4880	*4880	*4640	*4640			*3100	*3100	7.31
19.7 ft	lb					*10760	*10760	*10230	*10230			*6830	*6830	(24.0)
4.5 m	kg			*7640	*7640	*5880	*5880	*5060	*5060	*4650	3990	*3020	*3020	8.00
14.8 ft	lb			*16840	*16840	*12960	*12960	*11160	*11160	*10250	8800	*6660	*6660	(26.2)
3.0 m	kg					*7360	*7360	*5720	5440	*4910	3890	*3080	*3080	8.36
9.8 ft	lb					*16230	*16230	*12610	11990	*10820	8580	*6790	*6790	(27.4)
1.5 m	kg					*8690	7850	*6380	5200	*5210	3770	*3250	3160	8.44
4.9 ft	lb					*19160	17310	*14070	11460	*11490	8310	*7170	6970	(27.7)
Ground Line	kg			*6320	*6320	*9290	7550	*6790	5020	*5370	3680	*3590	3220	8.25
	lb			*13930	*13930	*20480	16640	*14970	11070	*11840	8110	*7910	7100	(27.1)
-1.5 m	kg	*6580	*6580	*10750	*10750	*9140	7470	*6760	4940	*5180	3650	*4210	3490	7.77
-4.9 ft	lb	*14510	*14510	*23700	*23700	*20150	16470	*14900	10890	*11420	8050	*9280	7690	(25.5)
-3.0 m	kg	*11250	*11250	*11470	*11470	*8270	7520	*6120	4970			*4900	4120	6.93
-9.8 ft	lb	*24800	*24800	*25290	*25290	*18230	16580	*13490	10960			*10800	9080	(22.7)
-4.5 m	kg			*8610	*8610	*6290	*6290					*4630	*4630	5.58
-14.8 ft	lb			*18980	*18980	*13870	*13870					*10210	*10210	(18.3)

## Lifting Capacity (Without Dozer)

Capacities based on North American Standard Configuration in accordance with ISO condition 2 standard.

Boom: 5.68 m (18' 8")

Arm: 2.92 m (9' 7")

Shoe 800 mm (32") triple grouser, CWT 5,300 kg (11,685 lb)

Rating over front

Rating over side or 360 degree

Lift-point height m (ft)		At max. reach										Reach m (ft)		
		1.5m (4.9ft)		3.0m (9.8ft)		4.5m (14.8ft)		6.0 m (19.7 ft)		7.5 m (24.6 ft)			Capacity	
9.0 m	kg													
29.5 ft	lb													
7.5 m	kg					*4610	*4610	*4230	*4230			*3370	*3370	*3370
24.6 ft	lb					*10160	*10160	*9330	*9330			*7430	*7430	*7430
6.0 m	kg					*4880	*4880	*4640	*4640			*3100	*3100	*3100
19.7 ft	lb					*10760	*10760	*10230	*10230			*6830	*6830	*6830
4.5 m	kg			*7640	*7640	*5880	*5880	*5060	*5060	*4650	3540	*3020	*3020	*3020
14.8 ft	lb			*16840	*16840	*12960	*12960	*11160	*11160	*10250	7800	*6660	*6660	*6660
3.0 m	kg					*7360	*7360	*5720	4820	*4910	3430	*3080	2880	2880
9.8 ft	lb					*16230	*16230	*12610	10630	*10820	7560	*6790	6350	6350
1.5 m	kg					*8690	6890	*6380	4580	*5210	3320	*3250	2770	2770
4.9 ft	lb					*19160	15190	*14070	10100	*11490	7320	*7170	6110	6110
Ground Line	kg			*6320	*6320	*9290	6600	*6790	4400	5320	3230	*3590	2820	2820
	lb			*13930	*13930	*20480	14550	*14970	9700	11730	7120	*7910	6220	6220
-1.5 m	kg	*6580	*6580	*10750	*10750	*9140	6520	*6760	4330	*5180	3200	*4210	3060	3060
-4.9 ft	lb	*14510	*14510	*23700	*23700	*20150	14370	*14900	9550	*11420	7050	*9280	6750	6750
-3.0 m	kg	*11250	*11250	*11470	*11470	*8270	6570	*6120	4360			*4900	3620	3620
-9.8 ft	lb	*24800	*24800	*25290	*25290	*18230	14480	*13490	9610			*10800	7980	7980
-4.5 m	kg			*8610	*8610	*6290	*6290					*4630	*4630	*4630
-14.8 ft	lb			*18980	*18980	*13870	*13870					*10210	*10210	*10210

### NOTES:

- Lifting capacities are based on ISO 10567.
- Lifting capacity of the HX Series does not exceed 75% of tipping load with the machine on firm, level ground or 87% of full hydraulic capacity.
- The Lift-point is bucket pivot mounting pin on the arm (without bucket mass).
- (\*) indicates load limited by hydraulic capacity.

ENGINE	STD	OPT
CUMMINS B6.7 Engine	●	
<b>HYDRAULIC SYSTEM</b>		
<b>INTELLIGENT POWER CONTROL (IPC)</b>		
3-power mode, 2-work mode, user mode	●	
Variable Power Control	●	
Electrical Pump Flow Control (EPFC)	●	
Attachment Mode Flow Control	●	
Engine Auto Idle	●	
Engine Auto Shutdown Control	●	
Electronic Fan Control	●	
Hyundai Bio Hydraulic Oil (HBHO)		●
<b>CAB &amp; INTERIOR</b>		
<b>ISO STANDARD CABIN</b>		
Rise-up type windshield wiper	●	
Radio / USB player	●	
Handsfree mobile phone system with USB	●	
12 volt power outlet (24V DC to 12V DC converter)	●	
Electric horn	●	
All-weather steel cab with 360° visibility	●	
Safety Glass - Tempered Glass	●	
Safety Glass - Laminated Glass, Front Window & Glass		●
Safety Glass windows	●	
Sliding fold-in front window	●	
Sliding side window(LH)	●	
Lockable door	●	
Hot & cool box	●	
Storage compartment & Ashtray	●	
Transparent cabin roof-cover	●	
Sun visor	●	
Door and cab locks, one key	●	
Pilot-operated slidable joystick	●	
Console box height adjust system	●	
<b>AUTOMATIC CLIMATE CONTROL</b>		
Air conditioner & heater	●	
Defroster	●	
Starting Aid (air grid heater) for cold weather	●	
<b>CENTRALIZED MONITORING</b>		
8" LCD display	●	
LED room lamp	●	
Engine speed or Trip meter/Accel.	●	
Engine coolant temperature gauge	●	
Max power	●	
Low speed / High speed	●	
Auto idle	●	
Overload	●	
Check engine	●	
Air cleaner clogging	●	
Indicators	●	
ECO gauges	●	
Fuel level gauge	●	
Hyd. oil temperature gauge	●	
Fuel warmer	●	
Warnings	●	
Communication error	●	
Low battery	●	
Clock	●	
Cabin lights		●
Cabin front window rain guard		●
Cabin roof-steel cover		●
<b>SEAT</b>		
Adjustable air suspension seat with heater	●	
<b>CABIN FOPS (ISO 10262) LEVEL 2</b>		
FOPS (Falling Object Protective Structure)-ISO 10262 Level 2		●

CAB & INTERIOR	STD	OPT
<b>CABIN ROPS (ISO 12117-2)</b>		
ROPS (Roll Over Protective Structure)	●	
<b>SAFETY</b>		
Lifting Mode	●	
Battery master switch	●	
Rearview camera	●	
AAVM (Advanced Around View Monitoring)		●
Four front working lights (2 boom mounted, 2 front frame mounted)	●	
Travel alarm	●	
Rear work lamp		●
Beacon lamp		●
Electronic swing parking brake control	●	
Boom holding system	●	
Arm holding system	●	
Safety lock valve for boom cylinder with overload warning device		●
Safety lock valve for arm cylinder		●
Swing Lock System		●
Two outside rearview mirror	●	
<b>OTHERS</b>		
<b>BOOMS</b>		
5.68 m mono, 18' 8"	●	
5.65 m 2-piece, 18' 6"		
<b>ARMS</b>		
2.0 m, 6' 7"		●
2.4 m, 7' 10"		●
2.92 m, 9' 7"	●	
Removable clean-out dust net for cooler	●	
Removable reservoir tank	●	
Fuel warmer		●
Self-diagnostics system	●	
Hi-mate (Remote Management System)	●	
Batteries (2 x 12V x 100 AH)	●	
Fuel filler pump (50 L/min)		●
Single-acting piping kit (breaker, etc.)		●
Double-acting piping kit (clamshell, etc.)	●	
Rotating Piping Kit		●
Air Compressor		●
Engine coolant heater		●
LED lamp		●
Smart button key		●
Electrical proportional Switch on RCV	●	
Quick coupler piping	●	
Quick coupler	●	
One Pedal Straight Travel System	●	
Accumulator for lowering work equipment	●	
Pattern change valve (2 patterns)	●	
Fine Swing Control System		●
Tool kit		●
<b>UNDERCARRIAGE</b>		
Lower frame under cover (Additional)		●
Lower frame under cover (Normal)	●	
<b>TRACK SHOES</b>		
Triple grousers shoe 600mm (1' 12")		●
Triple grousers shoe 700mm (2' 4")		●
Triple grousers shoe 800mm (2' 7")	●	
Track rail guard	●	
Dozer blade		●

\* Standard and optional equipment may vary. Contact your Hyundai dealer for more information.  
 The machine may vary according to International standards.  
 \* The photos may include attachments and optional equipment that are not available in your area.  
 \* Materials and specifications are subject to change without advance notice.  
 \* All imperial measurements rounded off to the nearest pound or inch.

PLEASE CONTACT