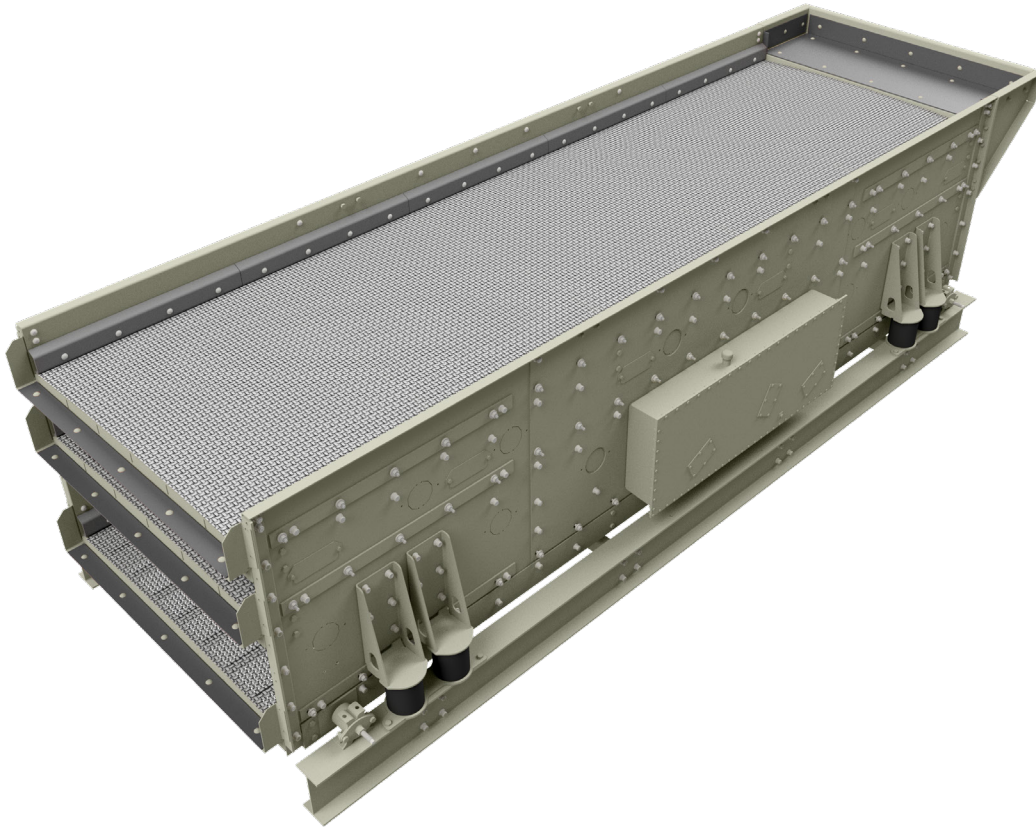


LP Screen

Horizontal Vari-Frequency Screen



Standard Screen Features

- VARI-FREQUENCY bottom deck for improved performance and throughput
- Low overall screen height for portability
- Three shaft adjustable oval stroke motion
- Quickly adjusts to a finer or coarser screening application by adjusting stroke angle, stroke length and speed
- Six self-aligning spherical roller bearings
- Fully contained oil splash lubrication system
- "Titan" non-contact drive seal (no breather required)
- Single crown decks
- Bolt in deck bracing reduces deck and basket stress
- Draw plates for side tension wire cloth
- 4 ft panels standard for most models
- Bolt-on, AR lined 24 in (510 mm) feedbox
- Bolt-on 4 in AR-lined discharge lips
- Huck bolted construction (no-weld side plates)
- Rubber springs to reduce basket, gear, and bearing stress. Also reduces noise. (Coil springs optional)
- Adjustable snubbers for screen stability
- Spray bar knockouts in side plates
- Right hand drive (viewed with material flow)
- Includes belt guard, motor mount, drive belt, and drive sheaves
- Dual belt drive on 38 shaft assemblies
- Lifting bars
- Self-aligning spherical draw bolt washers
- Side plate stiffeners/wear strips at draw bolts
- Screen wire cloth access covers standard on three deck models

Options

- 2-½° decline
- 5 in (125 mm) additional clearance between top and center decks
- Heavy duty flat decks for modular urethane media (N/A on bottom deck)
- Divided crown decks
- Screen media
- 5 ft wire cloth panels for 20 ft long screens
- U-bolts for heavy gauge wire cloth (N/A on bottom deck)
- Additional feed box and discharge lip configurations
- Base frame
- Coil springs with guards
- Shipping brackets
- Rubber liners for: feed box, discharge lips, shaft tubes, deck cross members, and deck bracing
- Top deck fall protection
- Spray system
- Bolt on covers for spray bar holes
- Freeboard extensions
- LH drive (viewed with material flow)
- TEFC screen drive motor

Feature	Specification
Stroke Length (amplitude) *	Adjustable up to ¾" (19mm)
Stroke Angle	Adjustable: 30° - 60°
Operating Speed (RPM)	Adjustable: 675 - 875
Maximum Feed Size	10" (255 mm)
Maximum Media Weight	8 lb/ft² (39 kg/m²)
Maximum Top Deck Opening: 20'	4" (100 mm)
Maximum feed drop height	18" (460 mm)
AR feedbox liner thickness	¼" (6 mm)
AR discharge lip liner thickness	¼" (6 mm)

* Stroke is adjusted by adding or removing plug weights. Stroke measured at the center of the screen with standard wire cloth, 4" discharge lips, and 24" feed box.

Physical and Operating Characteristics

Model	Width		Length		No. of Decks	Weight		Bearing Size (mm)	Power Required	
	ft	mm	ft	mm		lb	kg		hp	kW
6203-32LP w/ Vari-Frequency Deck	6	1,800	20	6,100	3	22,200	10,100	160	40	30

