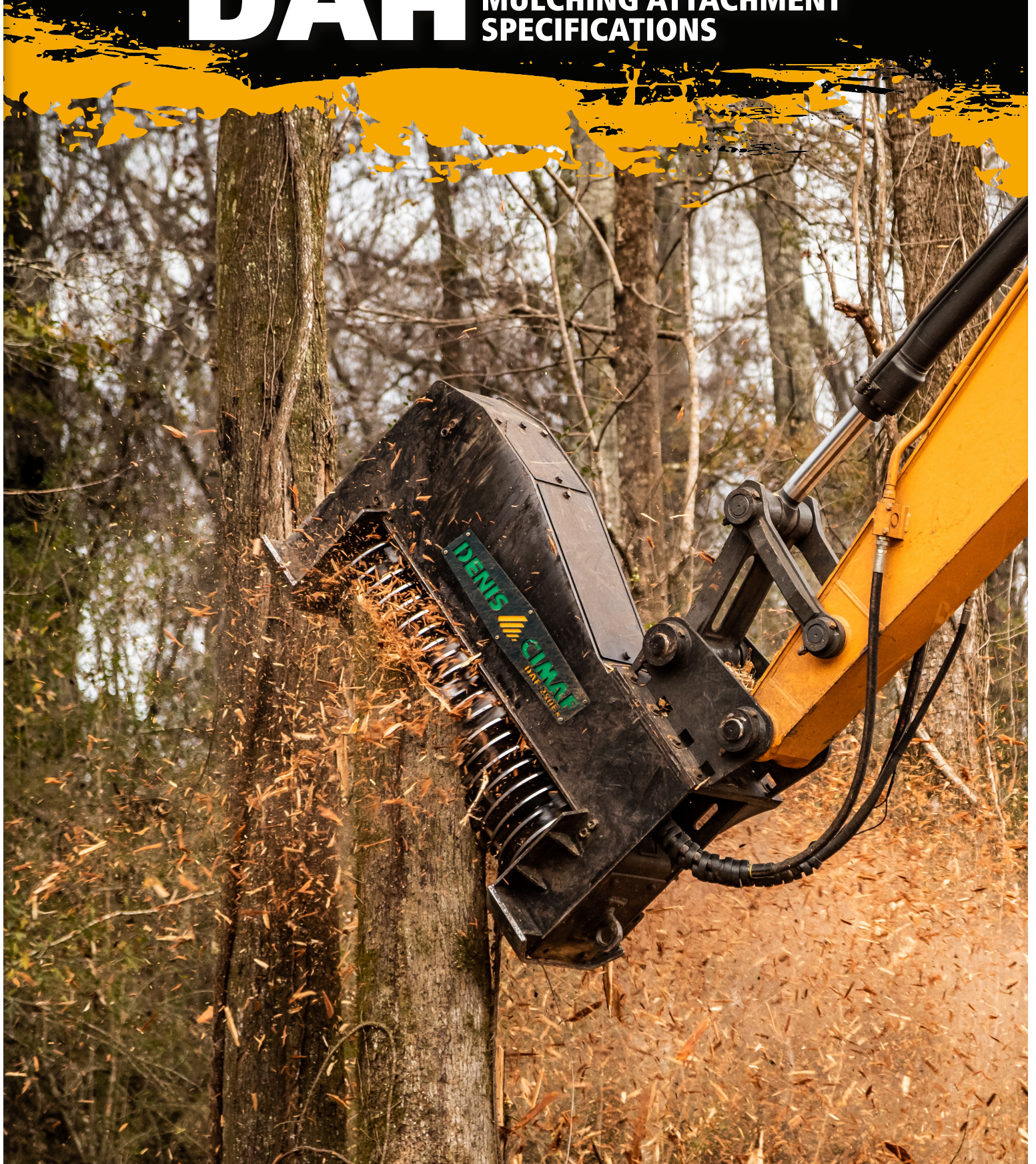


DENIS  **CIMAF**®

DAH EXCAVATOR-MOUNTED
MULCHING ATTACHMENT
SPECIFICATIONS



DAH EXCAVATOR-MOUNTED MULCHING ATTACHMENT SPECIFICATIONS

SPECIFICATION	DAH-150Er	DAH-150E	DAH-125D	DAH-100C	DAH-080C	DAH-085B	DAH-065B
Excavator Size	54,000-70,000 lb (24.5-32t)	40,000-54,000 lb (18-24.5t)	32,000-44,000 lb (16-22t)	20,000-30,000 lb (10-15t)	15,000-22,000 lb (7-10t)	15,000-22,000 lb (7-10t)	11,000-15,000 lb (5-7t)
Approx. Carrier Power	192 HP (143 kW) and up	130 HP (96 kW) and up	80 HP (60 kW) and up	65 HP (48 kW) and up	54 HP (40 kW) and up	54 HP (40 kW) and up	50 HP (37 kW) and less
Cutting Width	57" (145 cm)	57" (145 cm)	48" (122 cm)	42" (107 cm)	32" (81 cm)	34" (86 cm)	26" (66 cm)
Cutting Distance from Ground Level	1.07" (2.7 cm)	1.07" (2.7 cm)	1" (2.5 cm)	.75" (2 cm)	.75" (2 cm)	.75" (2 cm)	.75" (2 cm)
Number of Blades on Rotor	21	21	17	15	11	15	11
Target Material Diameter	20" (51 cm)	15" (38 cm)	10" (25 cm)	6" (15 cm)	4" (10 cm)	4" (10 cm)	≤ 4" (10 cm)
Exterior Length	78" (198 cm)	79" (200 cm)	65" (165 cm)	60" (152 cm)	47" (119 cm)	47" (119 cm)	39" (99 cm)
Height	43" (109 cm)	44" (112 cm)	38" (97 cm)	50" (127 cm)	38" (97 cm)	31" (79 cm)	33" (84 cm)
Width	32" (81 cm)	39" (99 cm)	29" (74 cm)	30" (76 cm)	30" (76 cm)	26" (66 cm)	26" (66 cm)
Rotor Diameter	20" (51 cm)	20" (51 cm)	18" (46 cm)	17" (43 cm)	17" (43 cm)	14" (36 cm)	14" (36 cm)
Weight, typical (estimated)	3700 lb (1678 kg)	3400 lb (1542 kg)	2220 lb (1007 kg)	1570 lb (712 kg)	1420 lb (644 kg)	1120 lb (508 kg)	920 lb (417 kg)
Weight, with all options	4640 lb (2105 kg)	4100 lb (1860 kg)	2900 lb (1315 kg)	2000 lb (907 kg)	1830 lb (830 kg)	1200 lb (544 kg)	1000 lb (454 kg)
HYDRAULIC SYSTEM	DAH-150Er	DAH-150E	DAH-125D	DAH-100C	DAH-080C	DAH-085B	DAH-065B
Motor Mx Cyl. (cc)	170	115*	115	85	60	60	28
Required Continuous Flow*	55 gal/min (208 L/min)	38 gal/min (144 L/min)	35 gal/min (133 L/min)	27 gal/min (102 L/min)	20 gal/min (76 L/min)	20 gal/min (76 L/min)	14 gal/min (53 L/min)
Operating Pressure (psi) - Up to*	6000	5000	5000	5000	4000	4000	4000
Optimal Rotating Speed (rpm)	3000	3000	3000	3000	3000	4000	4000
Pressure Line I.D.	1.25" (#20)	1" (#16)	1" (#16)	.75" (#12)	.625" (#10)	.625" (#10)	.625" (#10)
Return Line I.D.	1.25" (#20)	1" (#16)	1" (#16)	.75" (#12)	.625" (#10)	.625" (#10)	.625" (#10)
Drain Line	.75" (#12)	.75" (#12)	.75" (#12)	.75" (#12)	.50" (#8)	.50" (#8)	.50" (#8)
Options	DAH-150Er	DAH-150E	DAH-125D	DAH-100C	DAH-080C	DAH-085B	DAH-065B
Tilt System	√	√	√	√	√	√	√
Bolt-in Wear Liner	√	√	√	√			
Type of Sharpenable Blades	Standard	Standard	Standard	Standard	Standard	Standard	Standard

* Can have a 170cc motor option installed but requires more flow.

These are minimum requirements; call your Denis Cimaf Sales Representative for guidance in selecting the best match for your equipment.

(current as of 8/16/22)